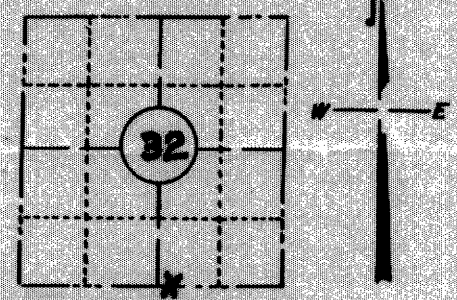


RECEIVED & FILED #. L470  
 Oneida County Surveyor's Office  
 Date JUN 27 1966  
 By M  
 OCS Area #. \_\_\_\_\_

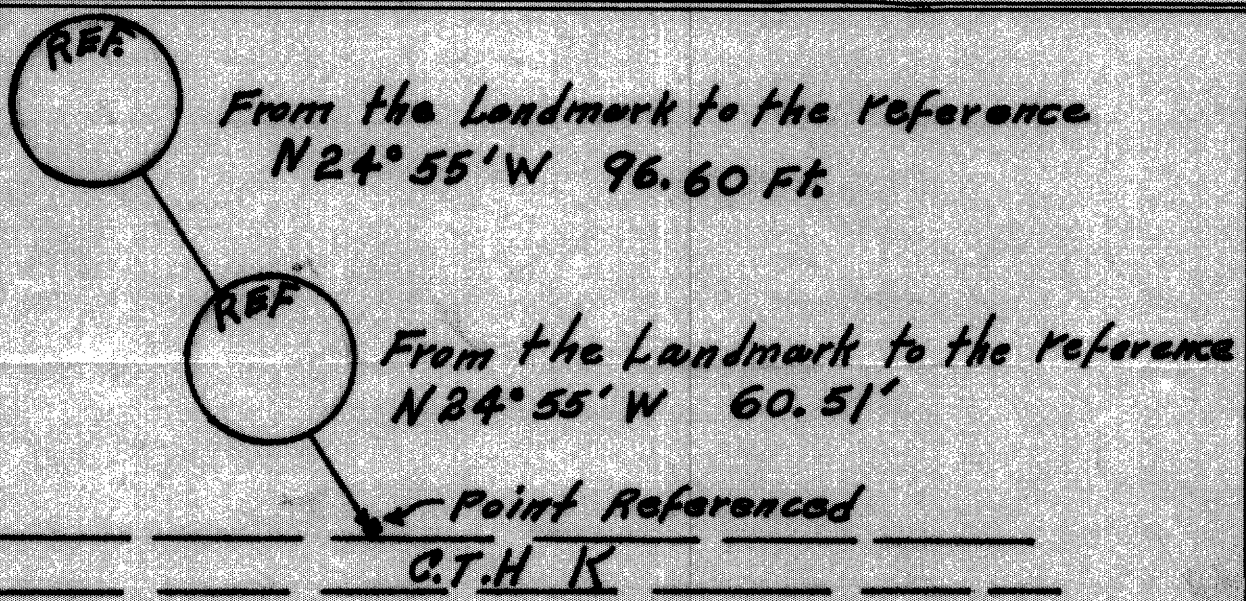
FORM NO. 710

**PRESERVATION OF LANDMARKS**

SECTION 59,635(7) WISCONSIN STATUTES  
 COUNTY Oneida  
 TOWN Newbold  
 HIGHWAY C.T.H K  
 SECTION NO. 32  
37 N., R. 8 E.  
 TYPE OF LANDMARK Property Corner  
 LOCATION INDICATED ON SKETCH X



LOCATION SKETCH



The landmark references indicated in the above sketch consist of two concrete monuments placed during reconstruction of C.T.H K, and prior to any disturbance of the landmark in place.

This space for copy of field notes or ties to the above described landmarks

Field notes or records filed in book no. 8652  
 at the State Highway Commission of Wisconsin office.  
 City of Rhinelander Oneida County.  
 Located or established by J. Martinez May 17, 1965  
 Title Project E19.

County Clerk's Office ONEIDA County, Wis. } ss  
 Received for record JAN. 18, 1966  
 Copy sent to County Surveyor JAN. 18, 1966

J.B. W. [Signature]  
 JEP County Clerk