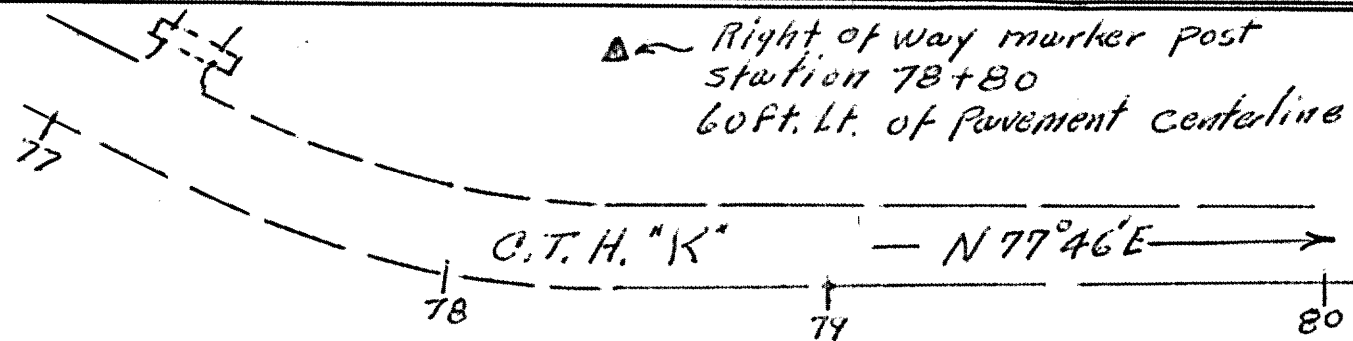
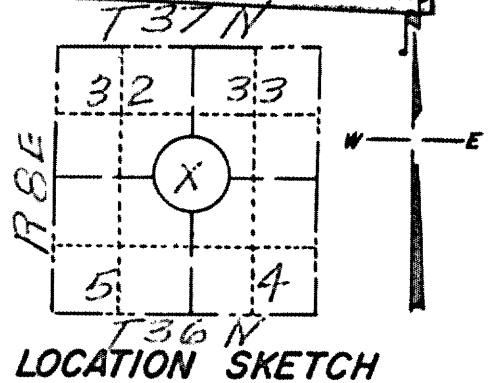


# PRESERVATION OF LANDMARKS

RECEIVED & FILED #... 4471  
 Oneida County Surveyors Office  
 Date JUN. 27 1968  
 By m  
 GCS Area #..... **PAGE**

SECTION 59,635(7) WISCONSIN STATUTES  
 COUNTY Oneida  
 TOWN Newbold-Crescent  
 HIGHWAY C.T.H. "K"  
 SECTION NO. Cor. of sec 4, 5 & 32, 33  
 T. 37 N., R. 8 E.  
 TYPE OF LANDMARK Section Corner  
 LOCATION INDICATED ON SKETCH X



Right of Way Post  
 station 78+80  
 70 ft. right of Pavement centerline

Landmark  
 Appr. 50 ft so  
 of the pavement  
 centerline at  
 station 79+13



A Concrete monument with brass cap replaces the landmark as located before the reconstruction of C.T.H. "K". Specifically that part designated as 50704(5)

This space for copy of field notes or ties to the above described landmarks

Field notes or records filed in book no. 8644  
 at the Wis. Dept. of Trans. Division of Highways office.  
 City of Rhineclauder, Oneida County.  
 Located or established by J. Martinson May, 1968  
 Title Project Engineer

County Clerk's Office ONEIDA County, Wis. } ss  
 Received for record 2-17-69, 1969

J.B. Verage  
 County Clerk

Copy sent to County Surveyor 2-17, 1969