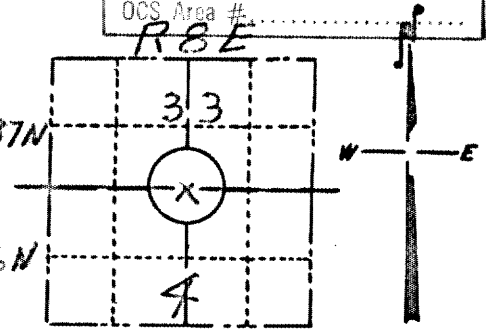


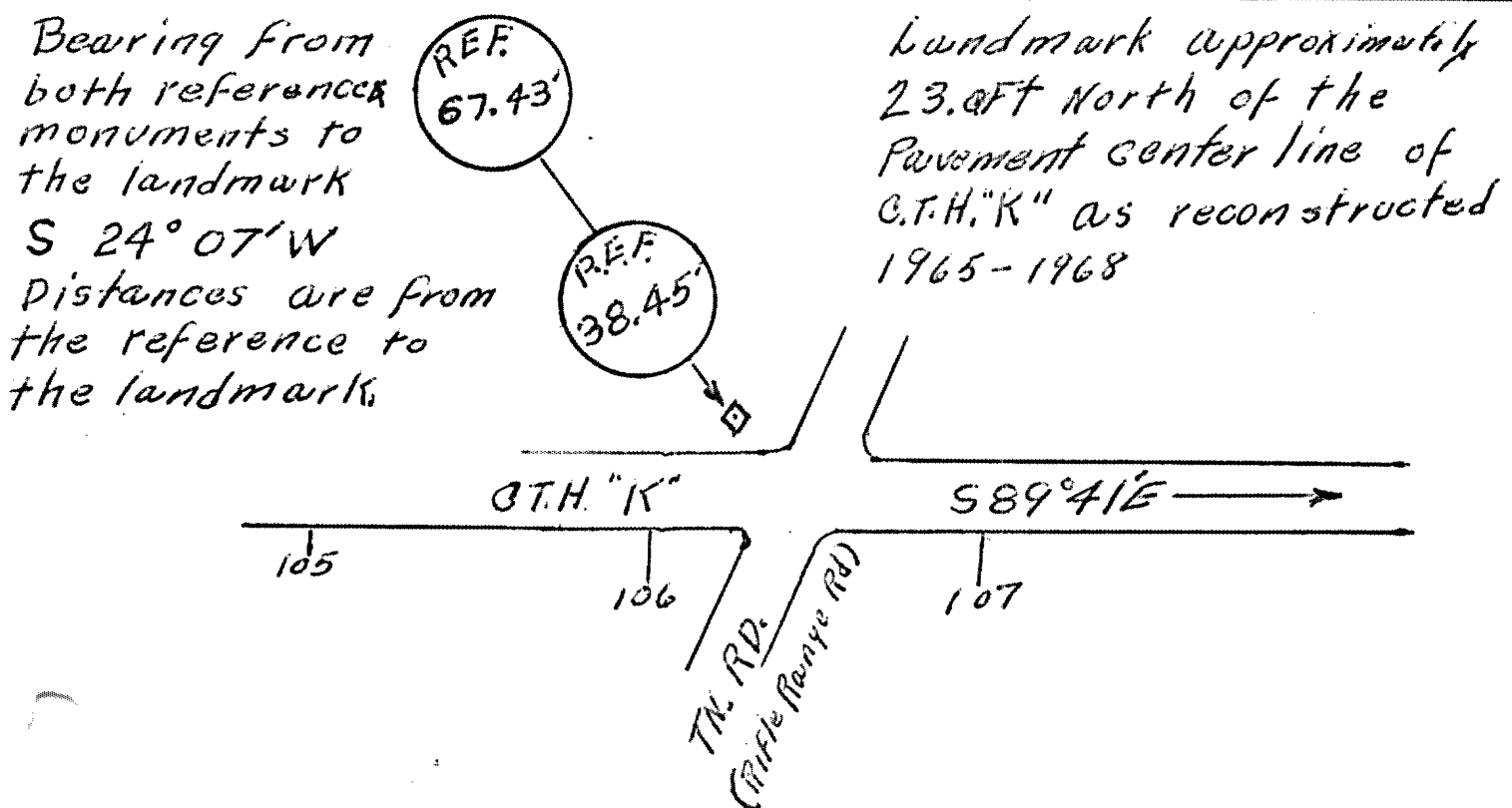
# PRESERVATION OF LANDMARKS

RECEIVED & FILED # 4472  
 Oneida County Surveyor's Office  
 Date JUN 27 1968  
 By M PAGE       
 OCS Area # R 8 E

SECTION 59,635(7) WISCONSIN STATUTES  
 COUNTY Oneida  
 TOWN Newbold-Crescent (Townline) T37N  
 HIGHWAY C.T.H. "K"  
 SECTION NO. 33 & 4  
 T. 37 N., R. 8 E. T36N  
 TYPE OF LANDMARK 1/4 Corner  
 LOCATION INDICATED ON SKETCH X



LOCATION SKETCH



This space for copy of field notes or ties to the above described landmarks

Field notes or records filed in book no. 8644  
 at the Wis. Dept. of Transportation, Division of Highways office.  
 City of Rhinelander Oneida County.  
 Located or established by J. Martinson May, 1968  
 Title Project Engineer  
 County Clerk's Office ONEIDA County, Wis. } ss  
 Received for record 2-17-69, 1969  
J.B. Usage  
 County Clerk

Copy sent to County Surveyor 2-17, 1969