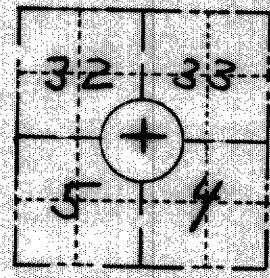


FIELD SURVEY NOTES
PRESERVATION OF LANDMARKS
 (Pursuant to Section 59.635(7) Wisconsin Statutes)

State Highway Commission of Wisconsin
 Form E-D-707-65

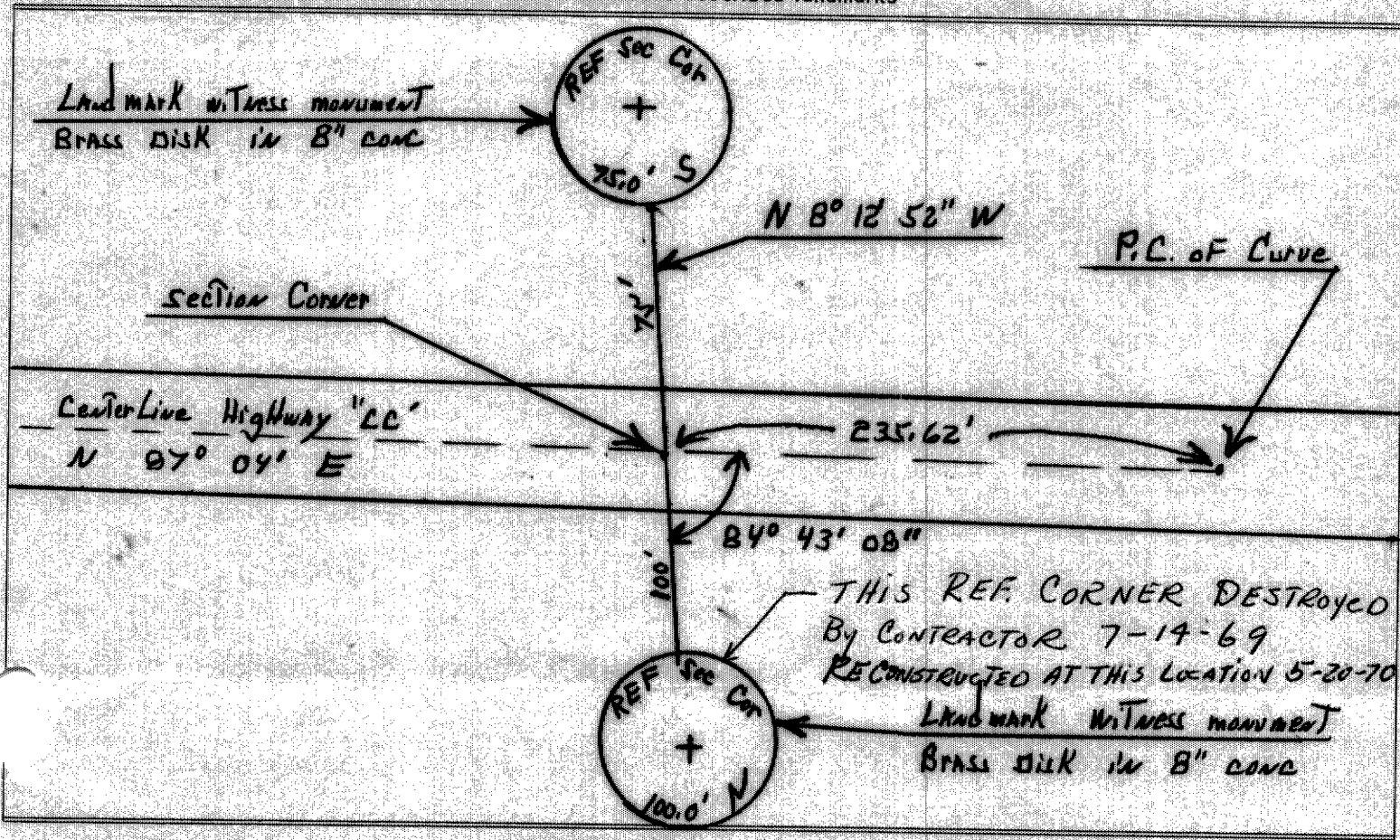
RECEIVED & FILED # **L-473**
 Oneida County Surveyor's Office
 Date **JUN. 27 1968**
 By **m**
 OCS Area # _____

COUNTY Oneida		
TOWN Pine Lake - Pelican		
HIGHWAY C.T.H. "CC"		
SECTION 32-33-5-4	TOWNSHIP 37N-36N	RANGE 9E
TYPE OF LANDMARK Iron Pipe (Removed by const.)		



LOCATION SKETCH
 (Location of landmark indicated by "x")

This space for copy of field notes or ties to the above described landmarks



FILED UNDER PROJECT NUMBER S0706 (6)			COUNTY CLERK'S OFFICE COUNTY OF ONEIDA WISCONSIN } 55	
SHC DISTRICT OFFICE NUMBER 7	CITY Rhinelander	COUNTY Oneida	DATE RECEIVED FOR RECORD 2-17-69	DATE COPY SENT TO COUNTY SURVEYOR 2-17-69
LOCATED OR ESTABLISHED BY NAME DAVID MAW			SIGNATURE OF COUNTY CLERK J.B. Verage	
TITLE Project Engineer DATE 10-31-68				