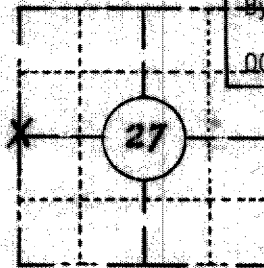


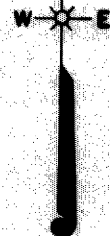
FIELD SURVEY NOTES  
**PRESERVATION OF LANDMARKS**  
 (Pursuant to Section 59.635(7) Wisconsin Statutes)

COUNTY <i>Oneida</i>		
TOWN <i>Stella</i>		
HIGHWAY <i>C.T.H. "C"</i>		
SECTION <i>27</i>	TOWNSHIP <i>37 N</i>	RANGE <i>10 E</i>
TYPE OF LANDMARK <i>3" Iron Pipe with Brass Cap</i>		

RECEIVED & FILED # *L480*  
 Oneida County Surveyors Association  
 Date *JUN 27 1988*  
 By *M*  
 DCS Area # \_\_\_\_\_

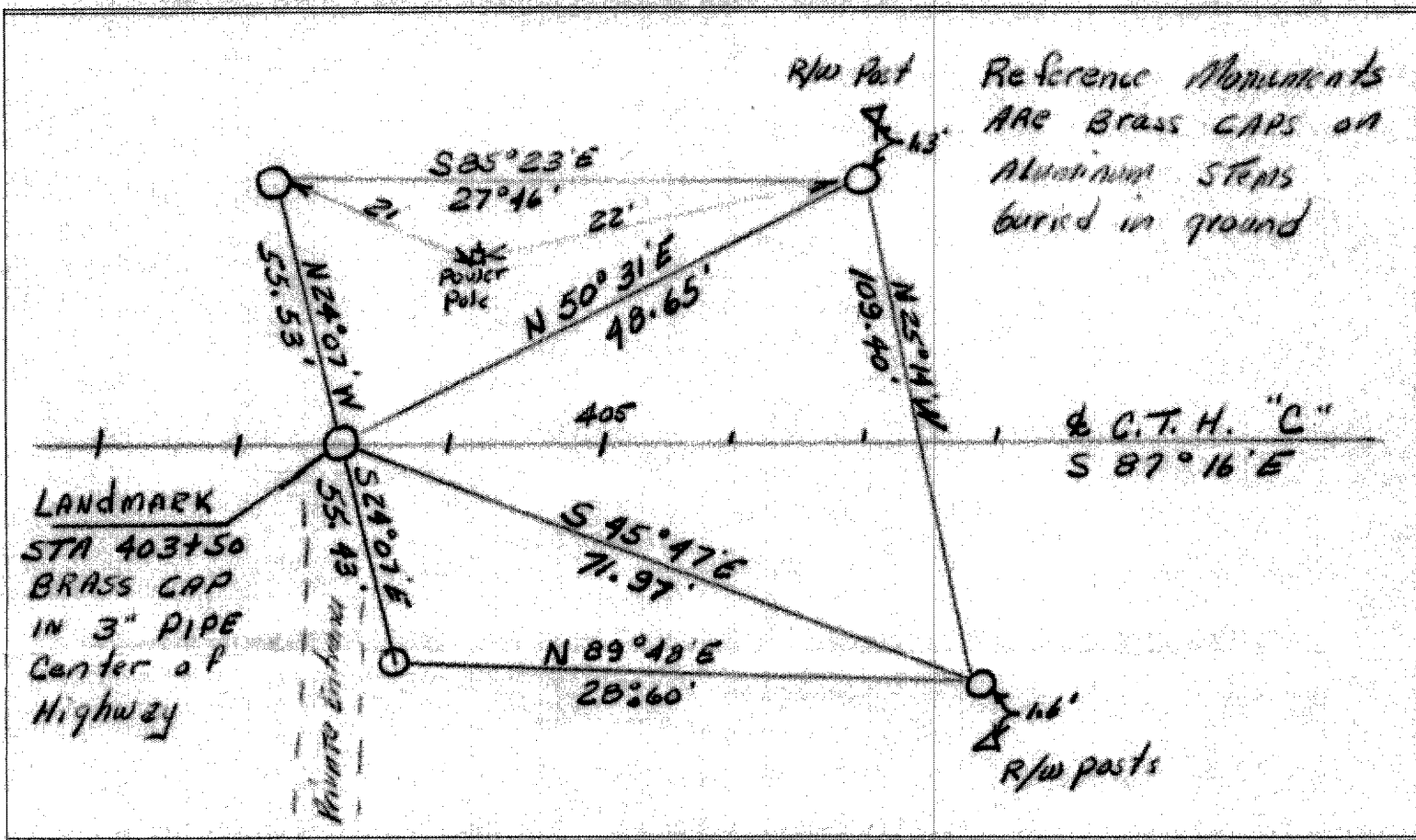


**LOCATION SKETCH**  
 (Location of landmark indicated by "x")



*Filed Jan 3-1974*  
*Debert name*

This space for copy of field notes or ties to the above described landmarks



FILED UNDER PROJECT NUMBER <i>50706 (7)</i>		
SHC DISTRICT OFFICE NUMBER <i>7</i>	CITY <i>Rhinelander</i>	COUNTY <i>Oneida</i>
LOCATED OR ESTABLISHED BY NAME <i>Dr. Hess</i> TITLE <i>Dist. Grad. Sur. DATE 12/14/73</i> <i>R.C.S. 0666</i>		

COUNTY CLERK'S OFFICE COUNTY OF <i>WISCONSIN</i> } SS	
DATE RECEIVED FOR RECORD <i>Nov 17 1973</i>	DATE COPY SENT TO COUNTY SURVEYOR <i>Nov 17 1973</i>
SIGNATURE OF COUNTY CLERK <i>Dorothy Neal</i>	