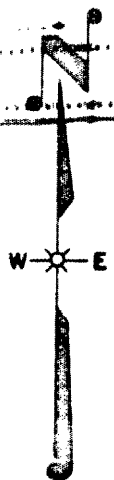


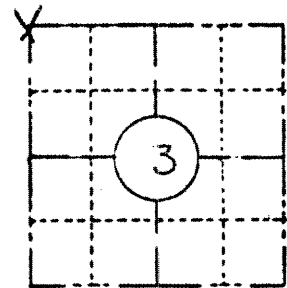
FIELD SURVEY NOTES
PRESERVATION OF LANDMARKS
 (Pursuant to Section 59.635(7) Wisconsin Statutes
 E-D-707-69

State of Wisconsin / Department of Transportation
 RECEIVED & FILED # 485
 Oneida County
 Date JUN 27 1988

By M
 OCS Area

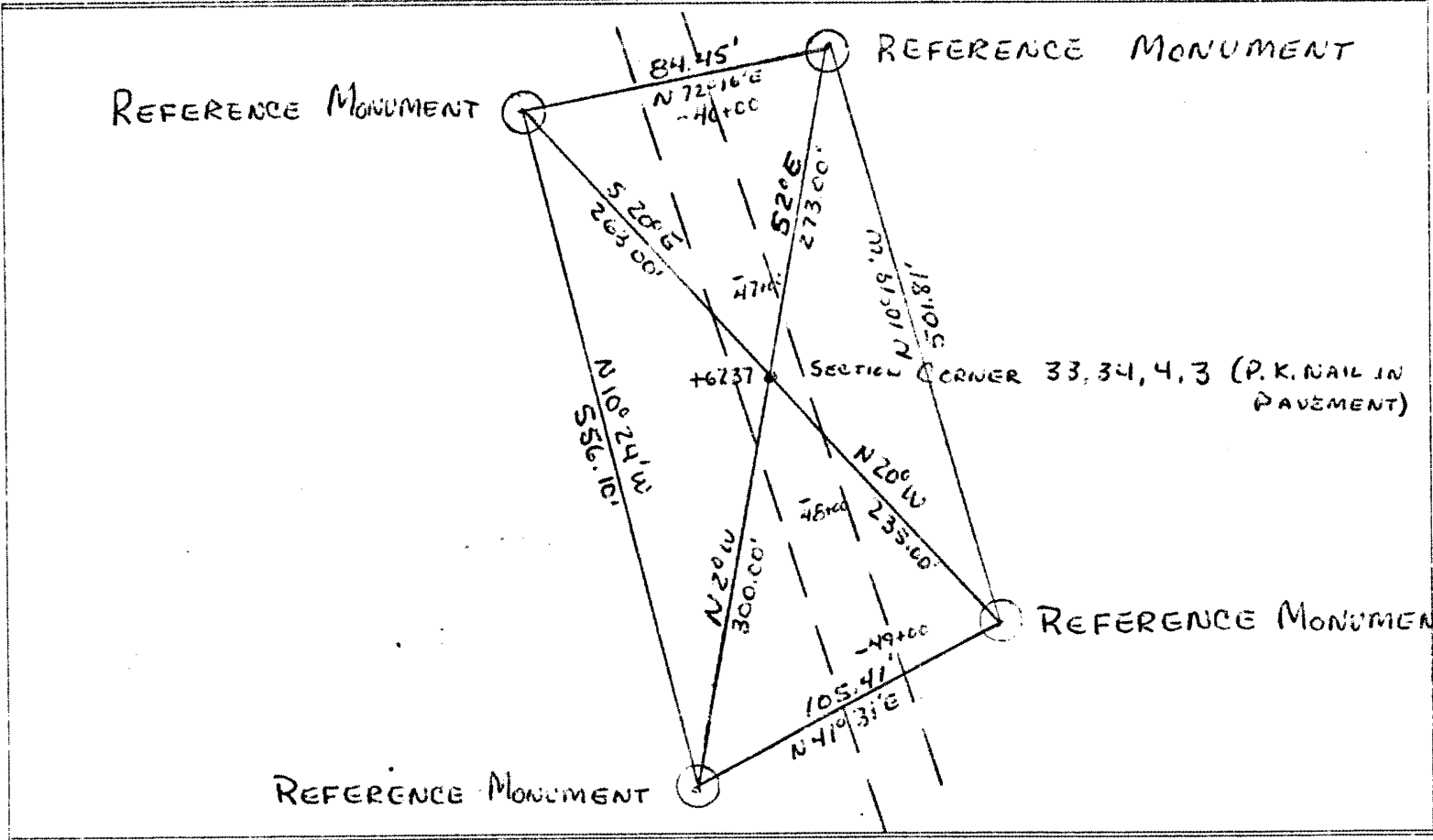


COUNTY ONEIDA		
TOWN SUGAR CAMP		
HIGHWAY C.T.H. "D"		
SECTION 33, 34, 34	TOWNSHIP 39N, 38N	RANGE 9E
TYPE OF LANDMARK P.K. NAIL IN PAVEMENT Z" SECTION CORNER		



LOCATION SKETCH
 (Location of landmark indicated by "x")

This space for copy of field notes or ties to the above described landmarks



FILED UNDER PROJECT 9451-01-70		
DISTRICT OFFICE NUMBER 7	CITY RHINELANDER	COUNTY ONEIDA
LOCATED OR ESTABLISHED BY NAME <u>Mawin M. Saspa</u> TITLE <u>PROJECT ENGINEER</u> DATE <u>11-16-78</u>		

COUNTY CLERK'S OFFICE COUNTY OF <u>Oneida</u> WISCONSIN } SS	
DATE RECEIVED FOR RECORD <u>12/27/78</u>	DATE COPY SENT TO COUNTY SURVEYOR <u>12/27/78</u>
SIGNATURE OF COUNTY CLERK <u>Dorothy Neal</u>	