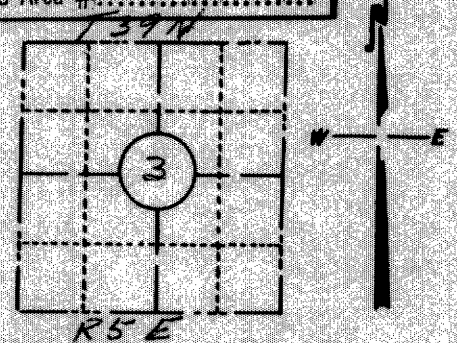


RECEIVED & FILED # L488
 Oneida County Surveyor's Office
 Date JUN 30 1968
 By M PAGE _____
 OCS Area # _____

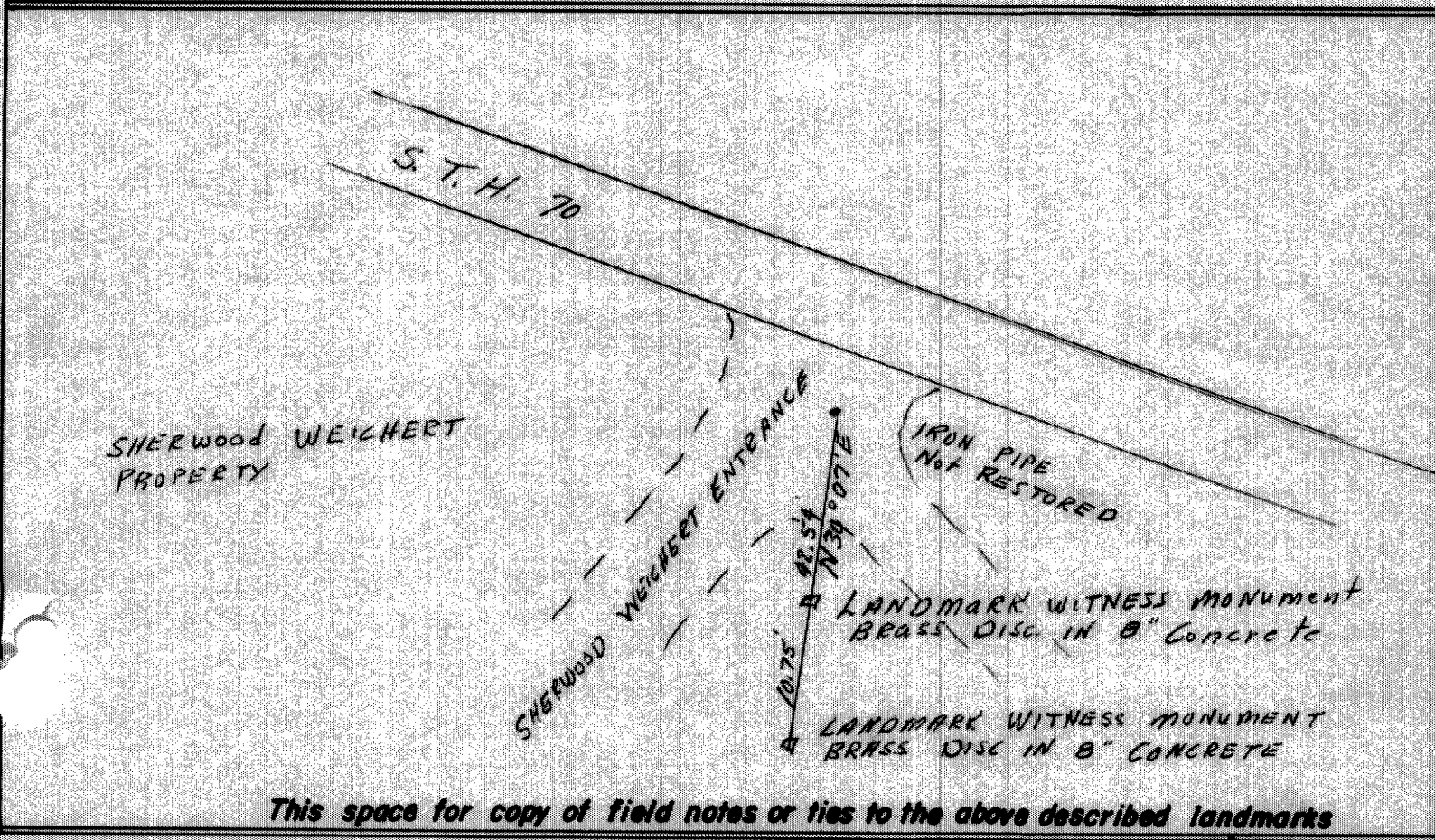
FORM NO. 710

PRESERVATION OF LANDMARKS

SECTION 59,635(7) WISCONSIN STATUTES
 COUNTY ONEIDA
 TOWN MINOCQUA
 HIGHWAY 70
 SECTION NO. 3
39 N., R 5 E.
 TYPE OF LANDMARK _____
 LOCATION INDICATED ON SKETCH X



LOCATION SKETCH



This space for copy of field notes or ties to the above described landmarks

Field notes or records filed in book no. _____
 at the _____ office.
 City of _____ County.
 Located or established by DURAN L. JOHNSON, 1966
 Title _____

County Clerk's Office Oneida County, Wis. } ss
 Received for record OCT 28 1968, 19____
 Copy sent to County Surveyor OCT 28 1968, 19____
Burlingame Verag
 County Clerk