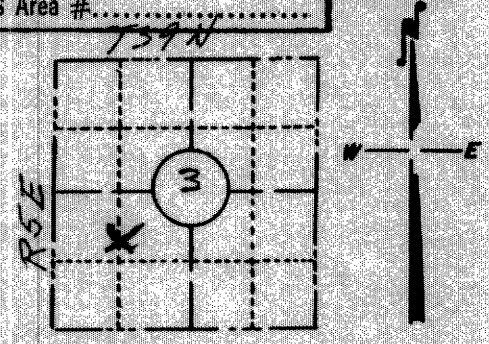


PRESERVATION OF LANDMARKS

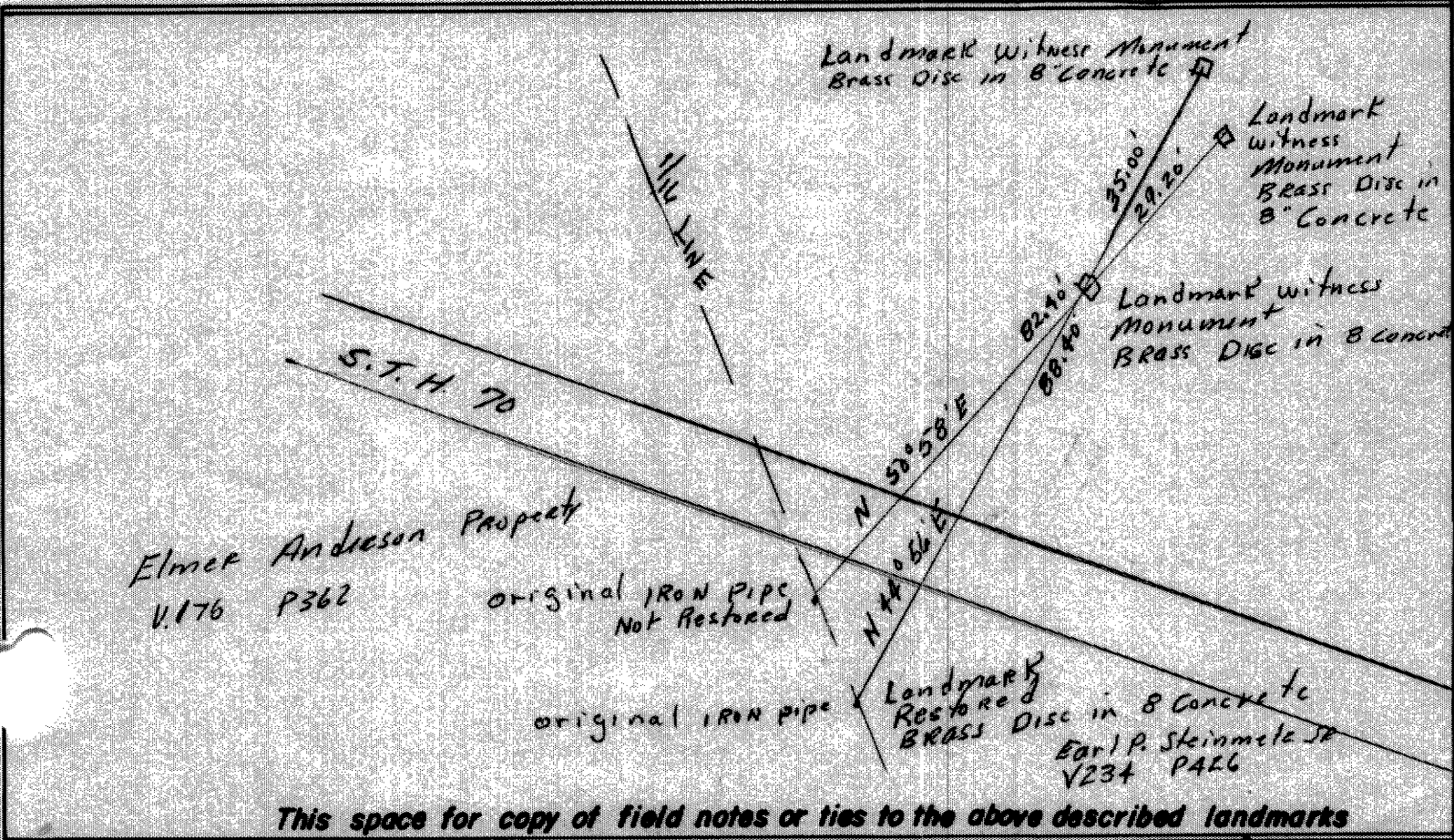
RECEIVED & FILED # L489
 Oneida County Surveyor's Office
 Date JUN 30 1966
 By M
 OCS Area # 739N

PAGE _____

SECTION 59,635(7) WISCONSIN STATUTES
 COUNTY ONEIDA
 TOWN MINOCQUA
 HIGHWAY 70
 SECTION NO. 3
39 N., R 5 E.
 TYPE OF LANDMARK IRON PIPES
 LOCATION INDICATED ON SKETCH X



LOCATION SKETCH



This space for copy of field notes or ties to the above described landmarks

Field notes or records filed in book no. _____
 at the _____ office.
 City of _____ County.
 Located or established by Duane L. Johnson, 1966
 Title _____

County Clerk's Office Oneida County, Wis. } ss
 Received for record OCT 28 1966, 19____
 Copy sent to County Surveyor OCT 28 1966, 19____
J.B. Wernago
 County Clerk