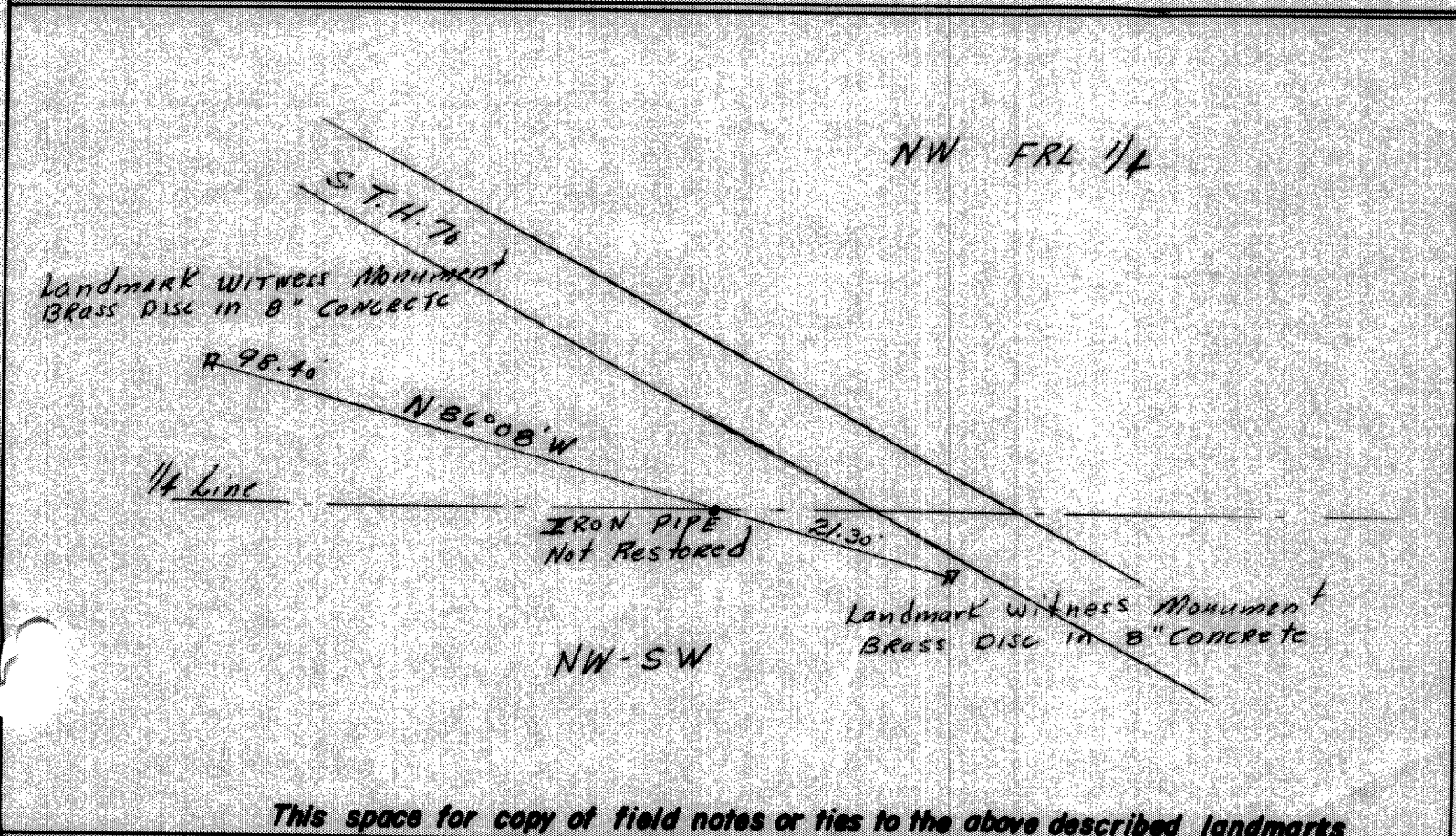
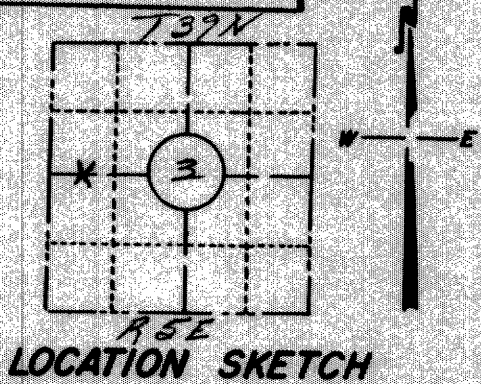


RECEIVED & FILED # 6490  
 Oneida County Surveyor's Office  
 Date JUN 30 1966  
 By M  
 OCS Area # \_\_\_\_\_

FORM NO. 710  
**PRESERVATION OF LANDMARKS**

PAGE \_\_\_\_\_

SECTION 59,635(7) WISCONSIN STATUTES  
 COUNTY ONEIDA  
 TOWN MINOCQUA  
 HIGHWAY 70  
 SECTION NO. 3  
39 N., R 5 E.  
 TYPE OF LANDMARK IRON PIPE  
 LOCATION INDICATED ON SKETCH X



This space for copy of field notes or ties to the above described landmarks

Field notes or records filed in book no. \_\_\_\_\_  
 at the \_\_\_\_\_ office.  
 City of \_\_\_\_\_ County.  
 Located or established by Avane L. Johnson, 1966  
 Title \_\_\_\_\_

County Clerk's Office Oneida County, Wis. } ss  
 Received for record OCT 28 1966, 19\_\_\_\_\_  
 Copy sent to County Surveyor OCT 28 1966, 19\_\_\_\_\_  
J.S. Wernke  
 County Clerk