

RECEIVED & FILED # L494  
Oneida County Surveyor's Office  
Date M

By JUN 30 1966

OCS Area # \_\_\_\_\_

PAGE \_\_\_\_\_

FORM NO. 710

# PRESERVATION OF LANDMARKS

SECTION 59,635(7) WISCONSIN STATUTES

COUNTY ONEIDA

TOWN MINOCQUA

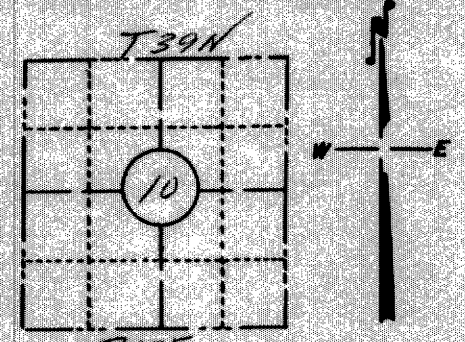
HIGHWAY 70

SECTION NO. 10

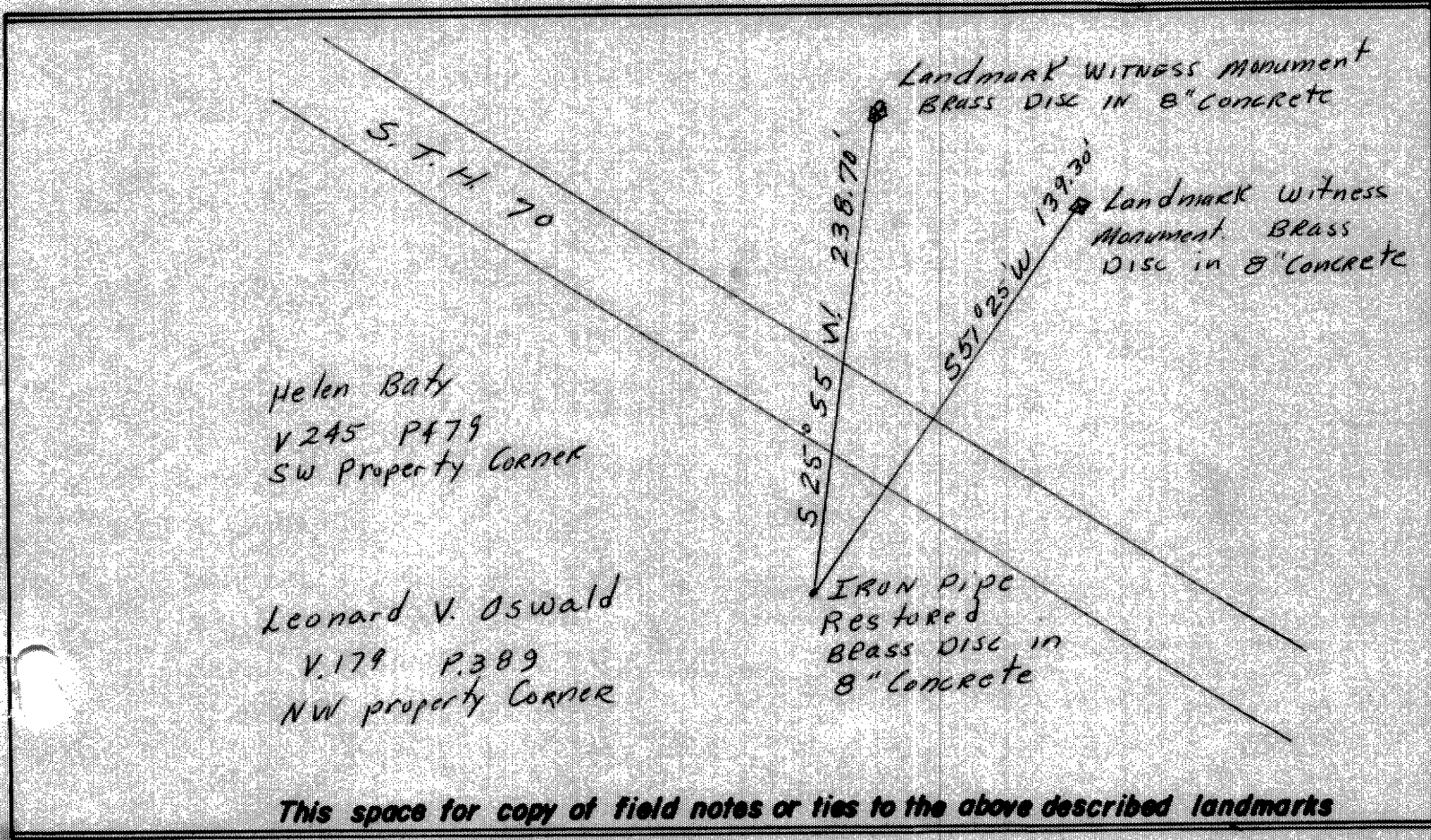
39 N., R 5 E. 600 ft Lot 2

TYPE OF LANDMARK Iron pipe Lot Corner

LOCATION INDICATED ON SKETCH X



LOCATION SKETCH



Helen Baty  
V.245 P.479  
SW Property Corner

Leonard V. Oswald  
V.179 P.389  
NW property Corner

IRON pipe  
Restored  
BRASS DISC IN  
8" Concrete

This space for copy of field notes or ties to the above described landmarks

Field notes or records filed in book no. \_\_\_\_\_

at the \_\_\_\_\_ office.  
City of \_\_\_\_\_ County,

Located or established by Duane L. Johnson, 1966

Title \_\_\_\_\_

County Clerk's Office Oneida County, Wis. } ss  
Received for record OCT 28 1966, 1966

Copy sent to County Surveyor OCT 28 1966, 1966

J. J. Wenzel  
County Clerk