

RECEIVED & FILED #...L495

Oneida County Surveyor's Office

Date JUN 30 1966

By M

OCS Area #... PAGE

FORM NO. 71C

OBSERVATION OF LANDMARKS

SECTION 59,635(7) WISCONSIN STATUTES

COUNTY Oneida

TOWNSHIP T38N

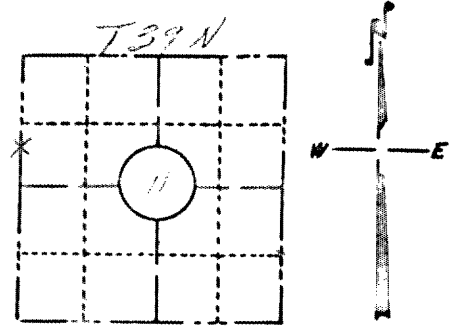
RANGE S. T. H. 72

SECTION NO. 11

SW 1/4 N., R. 45 E. SW 1/4 - NW 1/4

TYPE OF LANDMARK Lot Corner Iron Pipe

POSITION INDICATED ON SKETCH X

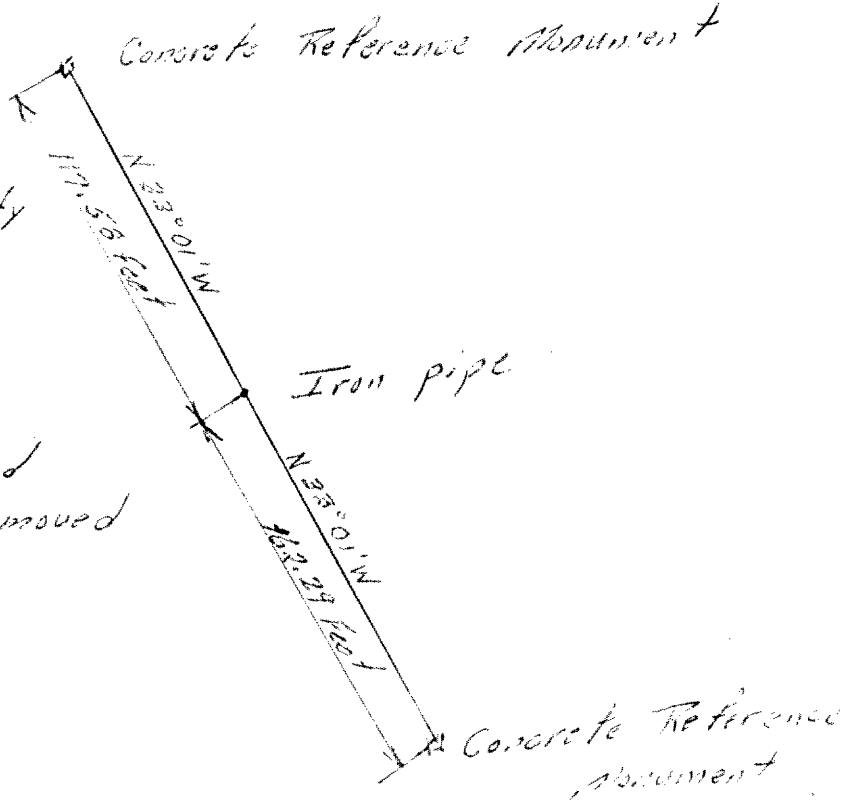


LOCATION SKETCH

Concrete Reference Monument

The iron pipe is apparently on the southwest property corner of the Sophie T. Gorny property as described in V. 257 p. 63

These concrete reference monuments were established before the iron pipe was removed



This space for copy of field notes or ties to the above described landmarks

Field notes or records filed in book no. _____

at the STATE HIGHWAY COMMISSION office.

City of Bluewater, Oneida County.

Located or established by Duane L. Johnson December 8, 1965

Title Project Engineer

County Clerk's Office ONEIDA County, Wis. } ss

Received for record JAN 23 1966, 1966

Copy sent to County Surveyor JUN 21 1966, 1966

B. Veroy
County Clerk