

RECEIVED & FILED # 5497  
 Oneida County Surveyor's Office  
 Date JUN 30 1988

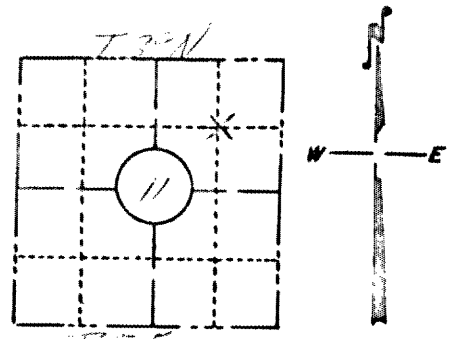
FORM NO 7.0

By M  
 OCS Area #.....

PAGE

**SECTION 59,635(7) WISCONSIN STATUTES**

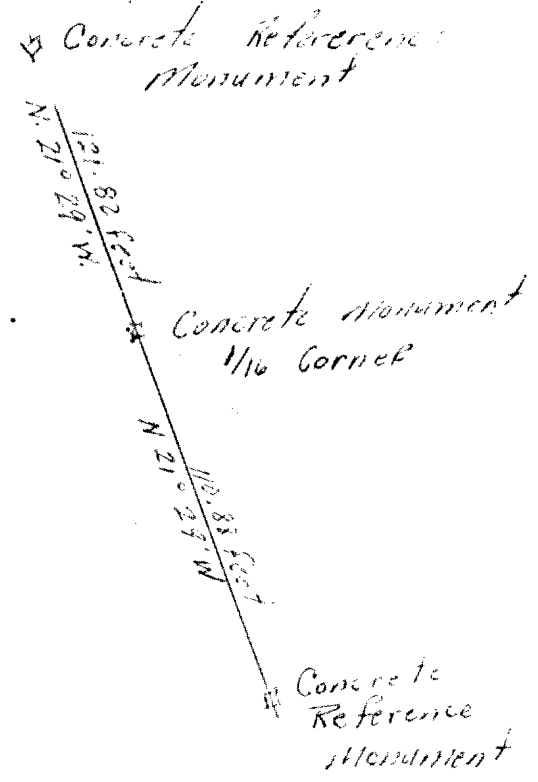
CITY Oneida  
 TOWN of Oneida  
 COUNTY S.T.H. 70  
 SECTION NO. 11  
1/4 N., 1/4 E. int corner of NE 1/4  
 TYPE OF LANDMARK 1/4 corner - Concrete Monument  
 LOCATION INDICATED ON SKETCH X



LOCATION SKETCH

This concrete monument is apparently  
 interior to the corner of the NE 1/4  
 Section 11, T39N, R5E

These concrete reference monuments  
 were established before the  
 concrete monument marking the 1/4 corner  
 was removed.



This space for copy of field notes or ties to the above described landmarks

Field notes or records filed in book no. \_\_\_\_\_  
 at the State Highway Commission office.  
 City of Oneida, Oneida County.  
 Located or established by Duane L. Johnson November 11, 1955  
 Title Project Engineer  
 County Clerk's Office ONEIDA County, Wis. }<sup>SS</sup>  
 Received for record JAN 21 1988, 19\_\_\_\_  
 Copy sent to County Surveyor JAN 21 1988, 19\_\_\_\_

B. Verag  
 County Clerk