

RECEIVED & FILED # L 499

Oneida County Surveyor's Office

Date JUN 30 1966

By M

QCS Area #

PAGE

FORM NO. 710

# PRESERVATION OF LANDMARKS

SECTION 59,635(7) WISCONSIN STATUTES

COUNTY Oneida

TOWN Minocqua

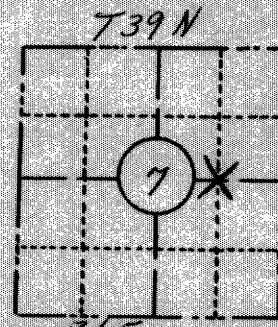
HIGHWAY 70

SECTION NO. 7

T. 39 N., R. 6 E. 1/8 Coener

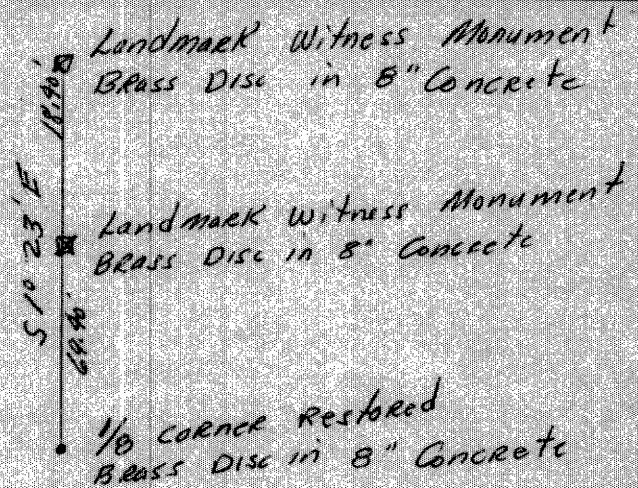
TYPE OF LANDMARK Iron Pipe 1/8 Coener

LOCATION INDICATED ON SKETCH X



LOCATION SKETCH

Charles H. Ashenbrenner  
V. 267 P. 296



This space for copy of field notes or ties to the above described landmarks

Field notes or records filed in book no. \_\_\_\_\_

at the \_\_\_\_\_ office.

City of \_\_\_\_\_ County.

Located or established by Duane L. Johnson, 19 66

Title \_\_\_\_\_

County Clerk's Office Oneida County, Wis. } ss

Received for record OCT 25 1966, 19 \_\_\_\_\_

OCT 25 1966

Copy sent to County Surveyor \_\_\_\_\_, 19 \_\_\_\_\_

OCT 28 1966

P. B. Verage  
County Clerk