

RECEIVED & FILED # 4501

On 23 County Surveyor's Office

Date JUN 30 1966

By M

QCS Area #

PAGE

FORM NO. 710

PRESERVATION OF LANDMARKS

SECTION 59,635(7) WISCONSIN STATUTES

COUNTY Oneida

TOWN Minocqua

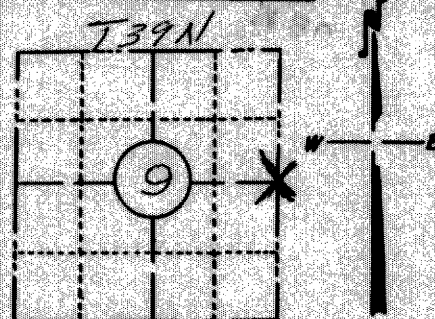
HIGHWAY 70

SECTION NO. 9

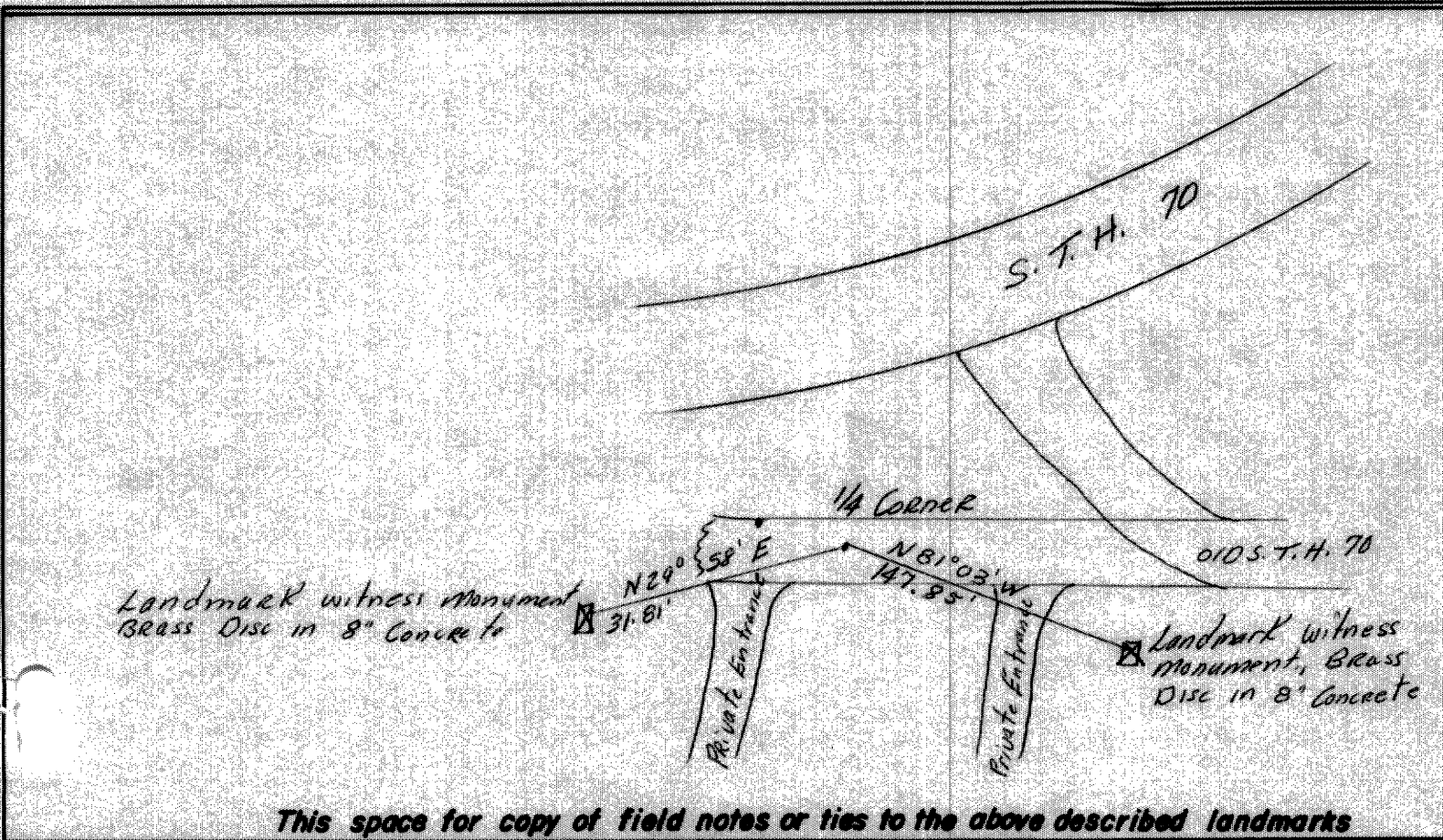
T 39 N., R 6 E.

TYPE OF LANDMARK Iron Pipe 1/4 CORNER

LOCATION INDICATED ON SKETCH X



LOCATION SKETCH



This space for copy of field notes or ties to the above described landmarks

Field notes or records filed in book no. _____

at the _____ office.

City of _____ County.

Located or established by Duane L. Johnson, 1966

Title _____

County Clerk's Office Oneida County, Wis. }^{ss}

Received for record OCT 28 1966, 1966

OCT 28 1966

Copy sent to County Surveyor _____, 1966

STB. Uerage
County Clerk