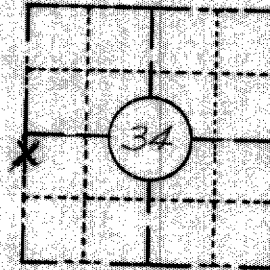


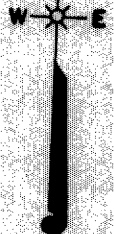
FIELD SURVEY NOTES  
**PRESERVATION OF LANDMARKS**  
 (Pursuant to Section 59.635(7) Wisconsin Statutes)

RECEIVED & FILED # L511  
 Wisconsin Department of Transportation  
 Oneida County Surveyor's Office  
 JUN 30 1988  
 Date.....  
 By M  
 OCS Area #.....

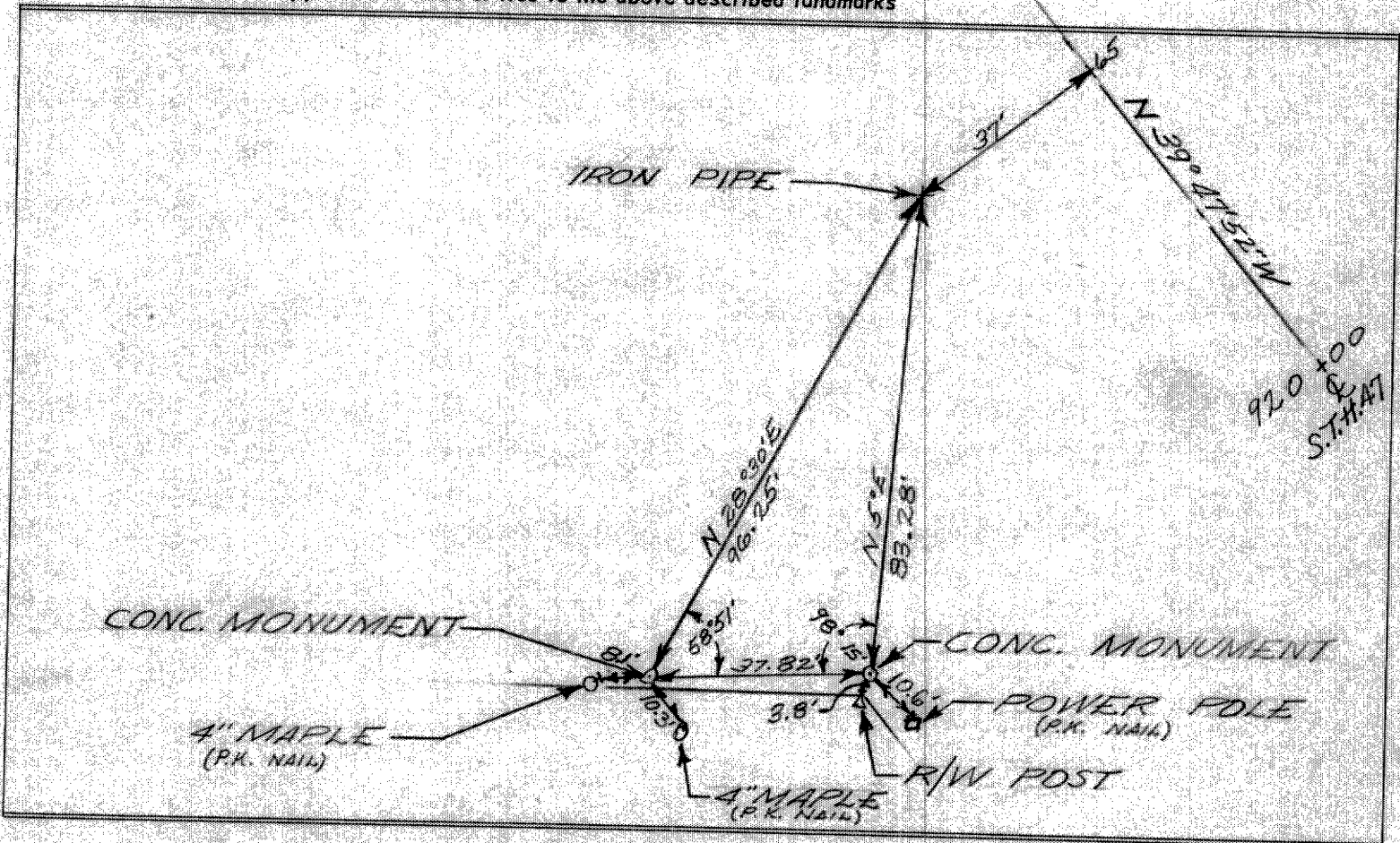
COUNTY <u>ONEIDA</u>		
TOWN <u>WOODRUFF</u>		
HIGHWAY <u>S.T.H. 47</u>		
SECTION <u>7</u>	TOWNSHIP <u>T39N</u>	RANGE <u>R7E</u>
TYPE OF LANDMARK <u>LOT CORNER</u>		



**LOCATION SKETCH**  
 (Location of landmark indicated by "x")



This space for copy of field notes or ties to the above described landmarks



FILED UNDER PROJECT NUMBER <u>S0281(8) I.D. 9051-1-70</u>		COUNTY CLERK'S OFFICE COUNTY OF <u>Oneida</u>	
SHC DISTRICT OFFICE NUMBER <u>7</u>	CITY <u>RHINELANDER</u>	COUNTY <u>ONEIDA</u>	WISCONSIN } 55
LOCATED OR ESTABLISHED BY NAME <u>JAMES F VOBORSKY</u>		DATE RECEIVED FOR RECORD <u>December 15, 1970</u>	DATE COPY SENT TO COUNTY SURVEYOR <u>December 22, 1970</u>
TITLE <u>PROJECT ENGINEER</u> DATE <u>9-69</u>		SIGNATURE OF COUNTY CLERK <u>Elmer Landeck</u>	