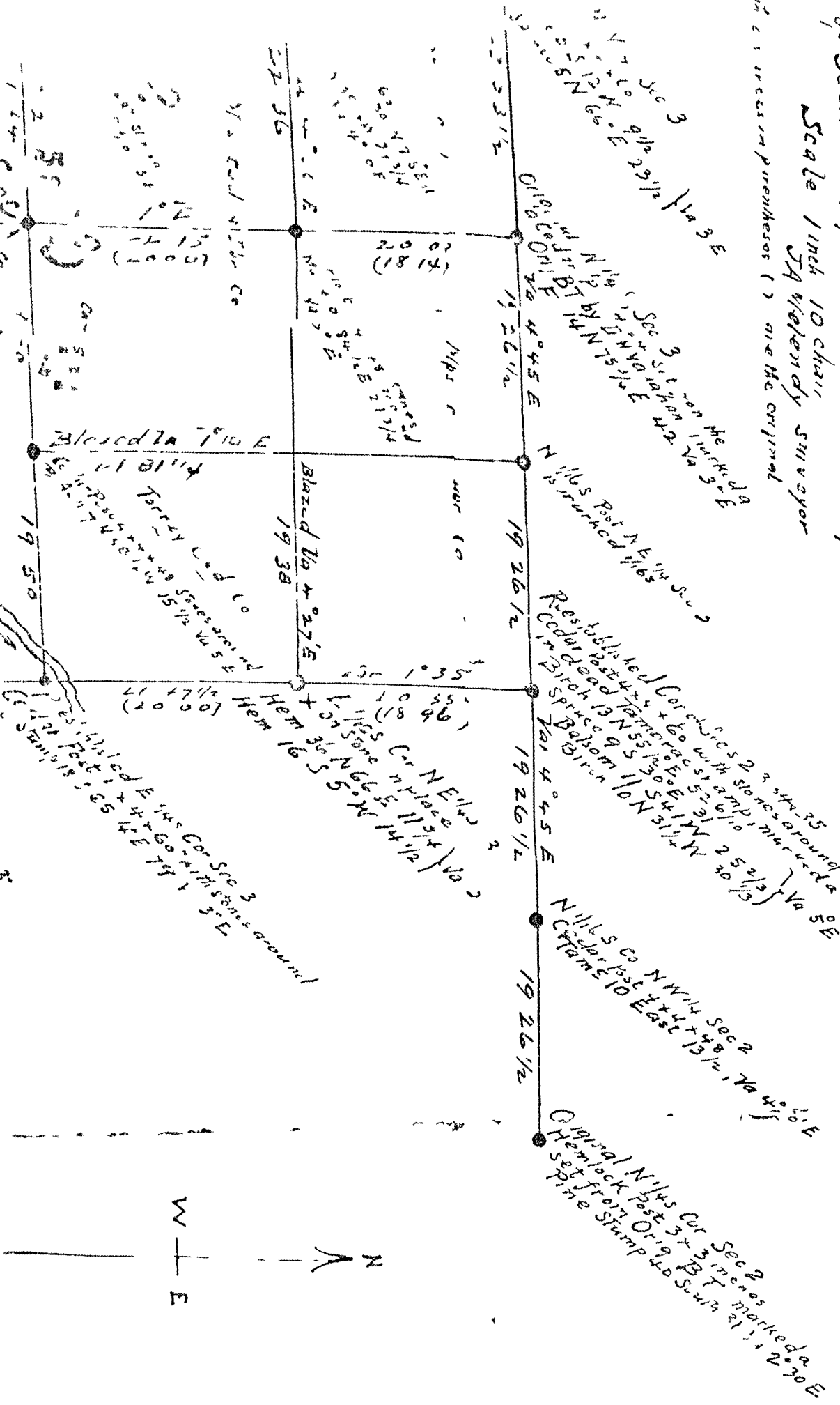


of Section 3, of Township No 37 N, of Range N11E, Oneida Co Wis

Scale 1 inch 10 chain  
J.A. Walendy Surveyor

in case of missing monuments ( ) are the original



RECEIVED & FILED # 1533

On file County Surveyor's Office

Date SEP 12 1986

By [Signature]

OCS 118

7164

Plat of Section 3, of Township No 37 N, of Range N11E, Oneida Co Wis  
J.A. Walendy  
July 77  
by D.M. Walendy

Original 1/4 Cor 3 & S 1/2  
 (1/4 Cor 3 & S 1/2)  
 Or 1/4 Cor 3 & S 1/2  
 Or 1/4 Cor 3 & S 1/2

Reestablished Cor to Sec 5  
 (1/4 Cor 3 & S 1/2)  
 Or 1/4 Cor 3 & S 1/2  
 Or 1/4 Cor 3 & S 1/2

39 37 1/2  
 (40 09)

Var 4 38 W  
 1/4 Cor 3 & S 1/2

Var 5 45 E  
 20 66 78  
 (20 00)

Var 5 29 E  
 39 49

(50 42)  
 78.98

39 49

41.33 56  
 7 2 16 F

Original 1/4 Cor 3 & S 1/2  
 (1/4 Cor 3 & S 1/2)  
 Or 1/4 Cor 3 & S 1/2  
 Or 1/4 Cor 3 & S 1/2

1530

Cor Sec 3  
 1/4 Cor 3 & S 1/2

State of Wisconsin  
 County of Shawano  
 do hereby certify that the survey  
 Subdivided Section No. 3, of Township  
 N, of Range No. 11 East & Orenda is  
 as represented by the courses, distances  
 and Map hereon, that made on  
 and subdivision for the Mirapohs led  
 during the month of Aug & Sept, 1910  
 Dated at Shawano Wis. this 24th day of Dec.  
 J. C. Kennedy  
 Surveyor

40 67

Var 3°30'E

Var 5°52'E

Var 3°18'

Var 3°36'

Var 1°E

Var 4°45'E

to West corner of section  
 - indicate in location of the lake  
 - 1/2 mile NW of  
 - 1/2 mile SW of  
 - 1/2 mile NE of  
 - 1/2 mile SE of

Indicate in location of the lake  
 1/2 mile NW of  
 1/2 mile SW of  
 1/2 mile NE of  
 1/2 mile SE of

M.C. on South  
 39 37  
 140 09  
 Var 4°30'W  
 170 Miles

RR

Var 5°45'E  
 20 6678  
 (2000)

Var 5°14'E  
 21 7334  
 (1900)

22 5212  
 (2000)

Var 3°4'E  
 19 333  
 (173)

Var 5°29'E  
 39 49

Var 1°E

27 36  
 22 26 1/2  
 (2000)

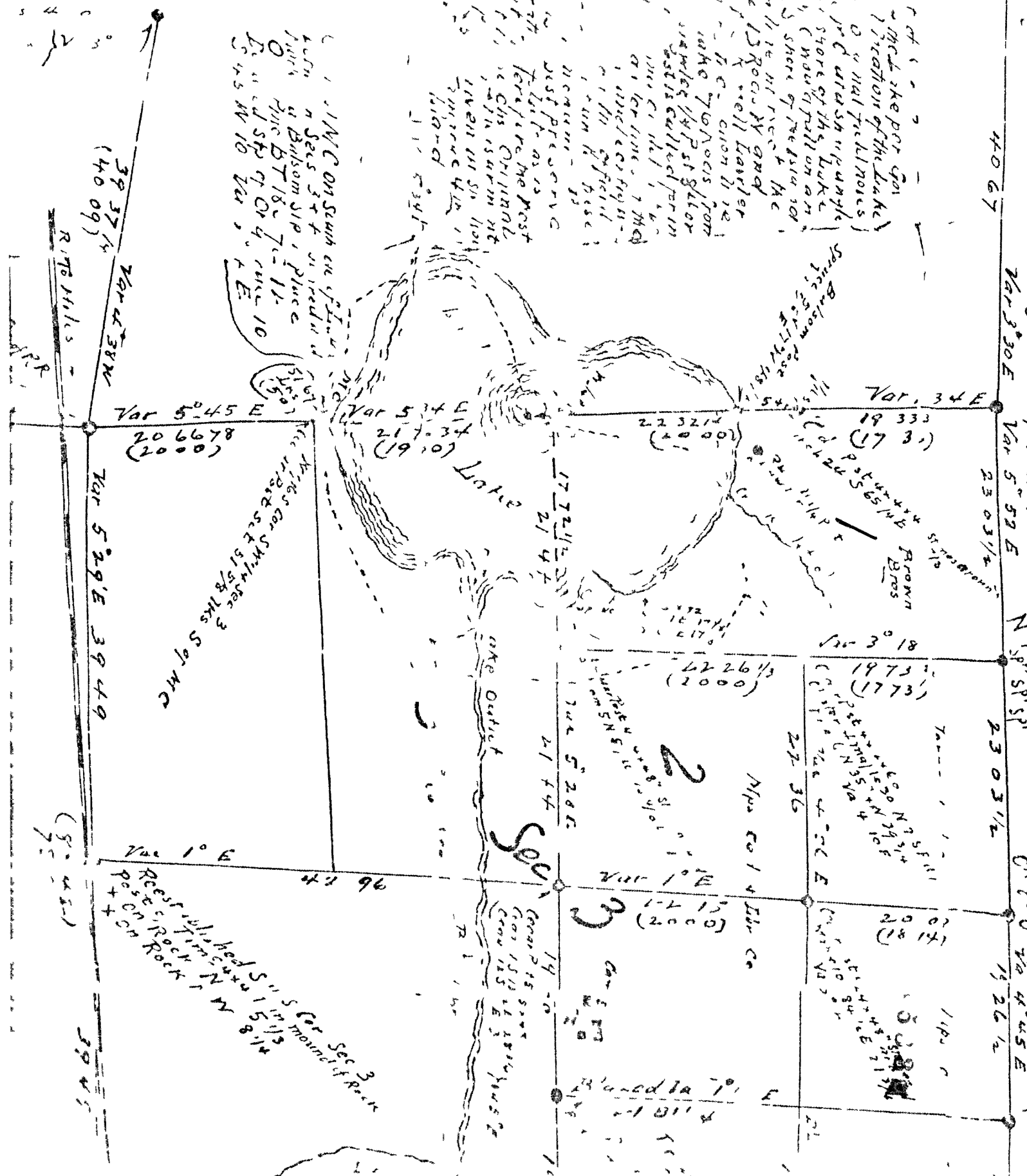
19 73 1/2  
 (1773)

20 07  
 (1614)

42 96  
 Restituted S...  
 Rock in NW Sec 3

Var 1°E  
 19 12  
 (2000)

20 07  
 (1614)

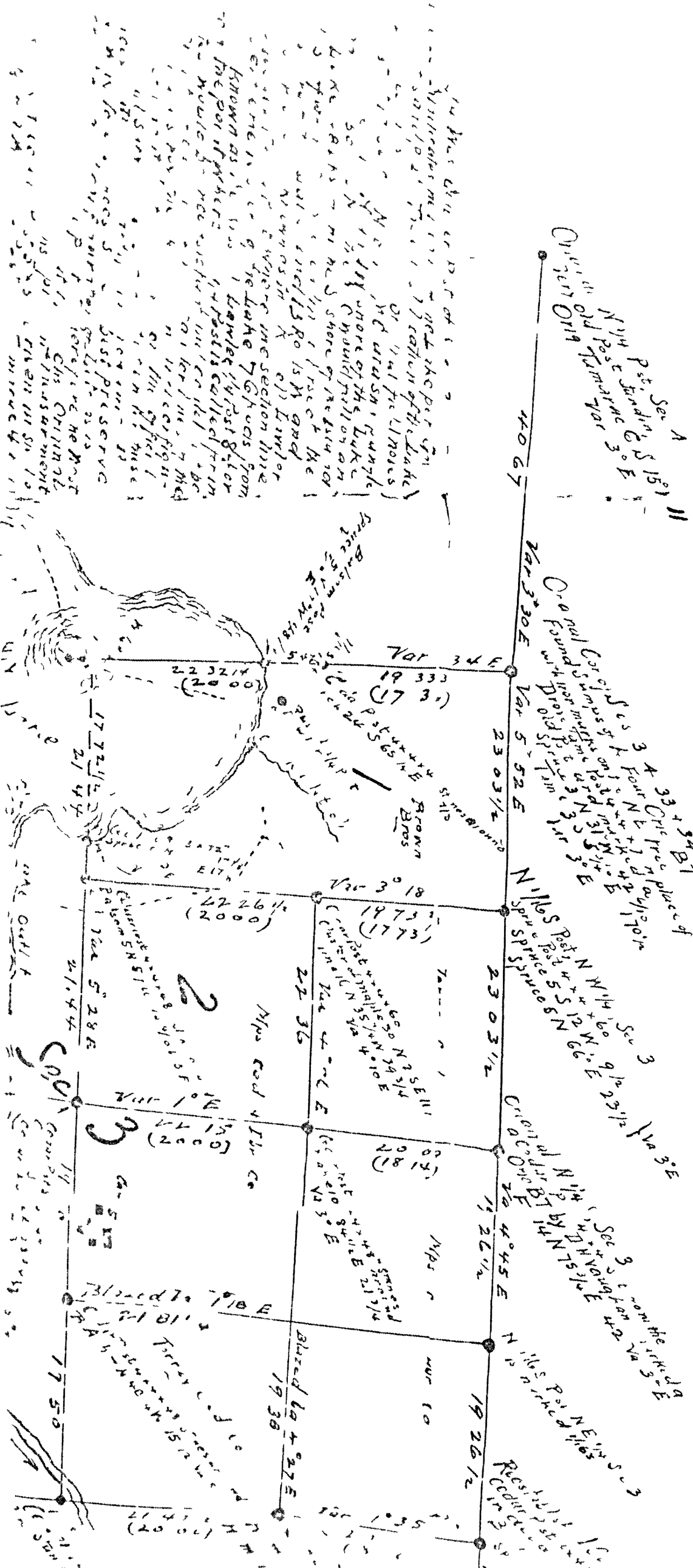


State of Wisconsin  
 County of Shawano J. T. J. McLeedy surveyor  
 do hereby certify that I, the undersigned and  
 subdivided Section No. 2, of Township No. 37  
 N., of Range No. 11 East, in Oneida Co. Wis. is  
 represented by the courses, distances, notes  
 and map hereon, that made said survey  
 and subdivision for the Mirapochs Cedar & Br. Co  
 in the month of Aug. - 3rd. 1910  
 at Shawano Wis. This 24th day of Dec. 1910  
 J. T. J. McLeedy  
 Surveyor



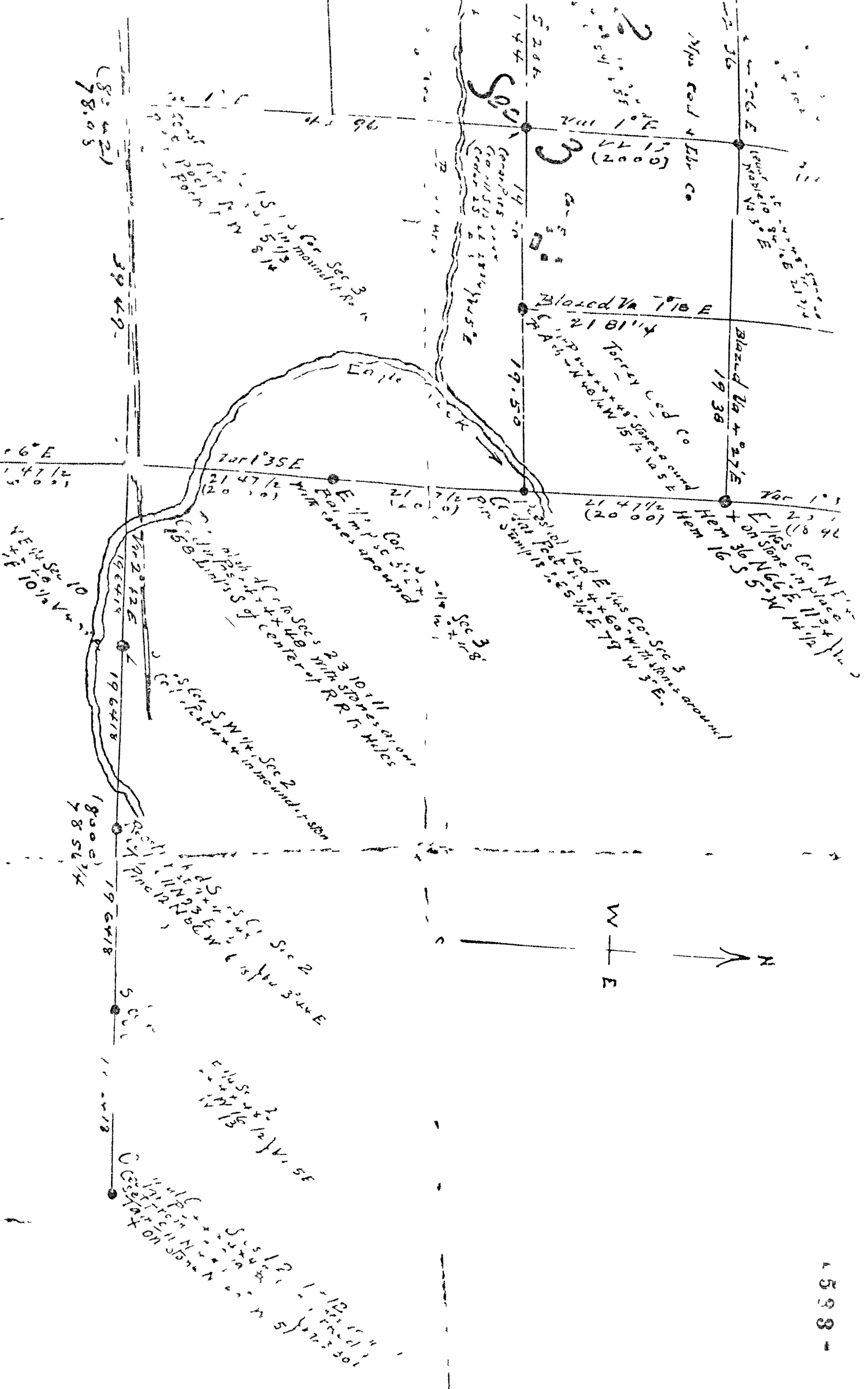
1538

Map showing notes of the Survey of Section 3, of Township No 37 N, Range N  
 Aug - Sept 1910  
 Scale 1 inch = 10 chain.  
 J.A. Melendy Surveyor  
 The distances in parentheses ( ) are the original



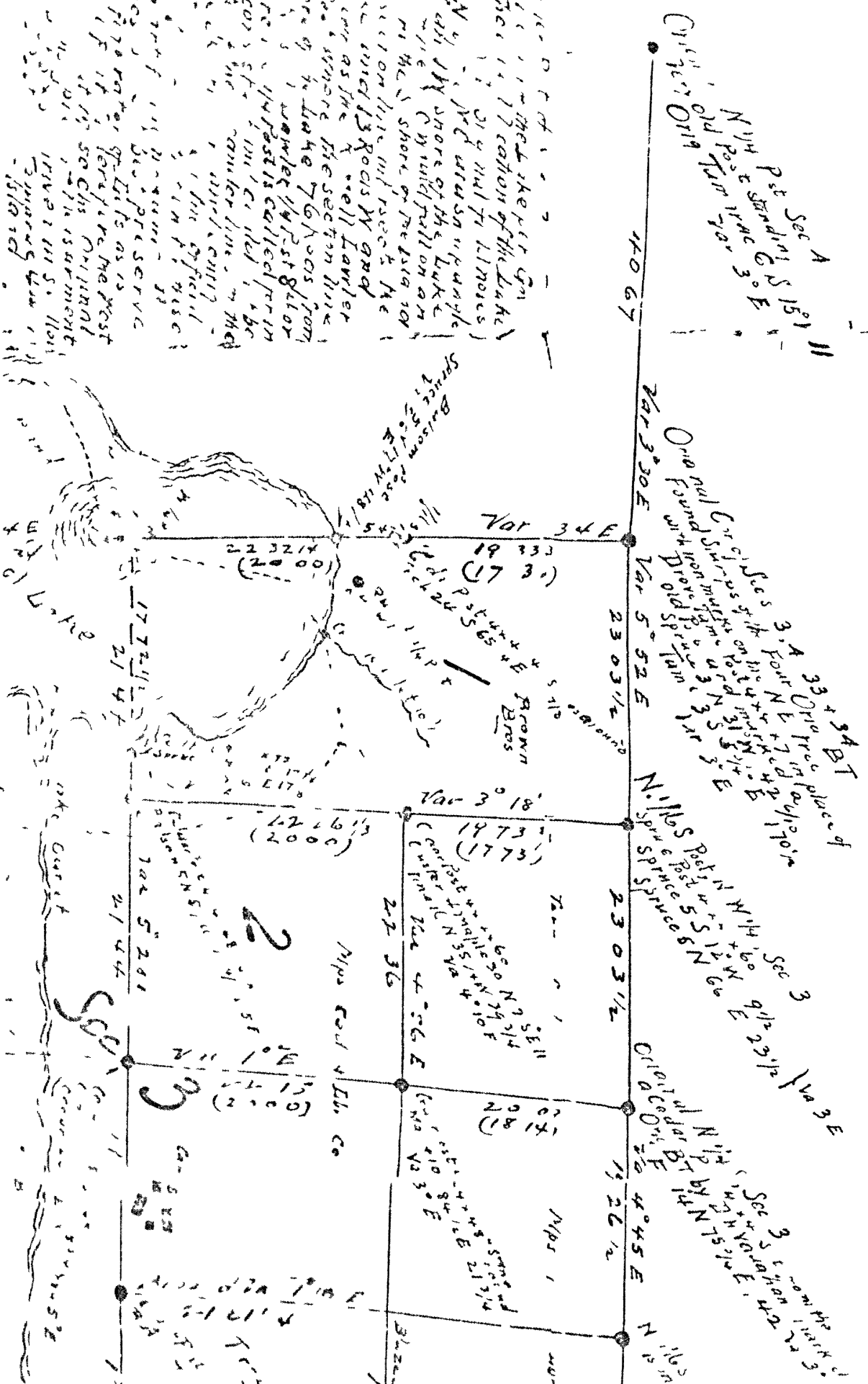
In the case of the ...  
 ... of the lake ...  
 ... of the lake ...  
 ... of the lake ...

... of the lake ...  
 ... of the lake ...  
 ... of the lake ...



Map showing notes of the Survey of Section 3, of Township No 37 N

Scale 1 inch = 10 chain.  
 Aug - Sept 1910  
 The distances in parentheses ( ) are the original



1. The distance of 140 67 is the distance from the corner of the Lake to the corner of the section of the Lake.  
 2. The distance of 230 3 1/2 is the distance from the corner of the Lake to the corner of the section of the Lake.  
 3. The distance of 192 1/2 is the distance from the corner of the Lake to the corner of the section of the Lake.  
 4. The distance of 140 67 is the distance from the corner of the Lake to the corner of the section of the Lake.  
 5. The distance of 230 3 1/2 is the distance from the corner of the Lake to the corner of the section of the Lake.  
 6. The distance of 192 1/2 is the distance from the corner of the Lake to the corner of the section of the Lake.  
 7. The distance of 140 67 is the distance from the corner of the Lake to the corner of the section of the Lake.  
 8. The distance of 230 3 1/2 is the distance from the corner of the Lake to the corner of the section of the Lake.  
 9. The distance of 192 1/2 is the distance from the corner of the Lake to the corner of the section of the Lake.  
 10. The distance of 140 67 is the distance from the corner of the Lake to the corner of the section of the Lake.

1. The distance of 140 67 is the distance from the corner of the Lake to the corner of the section of the Lake.  
 2. The distance of 230 3 1/2 is the distance from the corner of the Lake to the corner of the section of the Lake.  
 3. The distance of 192 1/2 is the distance from the corner of the Lake to the corner of the section of the Lake.  
 4. The distance of 140 67 is the distance from the corner of the Lake to the corner of the section of the Lake.  
 5. The distance of 230 3 1/2 is the distance from the corner of the Lake to the corner of the section of the Lake.  
 6. The distance of 192 1/2 is the distance from the corner of the Lake to the corner of the section of the Lake.  
 7. The distance of 140 67 is the distance from the corner of the Lake to the corner of the section of the Lake.  
 8. The distance of 230 3 1/2 is the distance from the corner of the Lake to the corner of the section of the Lake.  
 9. The distance of 192 1/2 is the distance from the corner of the Lake to the corner of the section of the Lake.  
 10. The distance of 140 67 is the distance from the corner of the Lake to the corner of the section of the Lake.

# Map showing notes of the Survey of Section 3, of Township No 37.

Aug + Sept 1910

Scale 1 inch = 10 chains.

Measurements in parentheses ( ) are the original

The original survey of this section was made by the U.S. Geol. Surv. in 1874. The original bearings and distances are as follows:  
 N 1/4 Sec 3, T37N, R15E, 36.00 chains long, 36.00 chains wide.  
 The original corners are as follows:  
 NW corner: N 1/4 Sec 3, T37N, R15E, 36.00 chains from the NW corner of the Township.  
 NE corner: N 1/4 Sec 3, T37N, R15E, 36.00 chains from the NE corner of the Township.  
 SW corner: N 1/4 Sec 3, T37N, R15E, 36.00 chains from the SW corner of the Township.  
 SE corner: N 1/4 Sec 3, T37N, R15E, 36.00 chains from the SE corner of the Township.



N 1/4 Sec 3, T37N, R15E, 36.00 chains long, 36.00 chains wide.  
 Original Corner of Sec 3 found in Balsam

N 1/4 Sec 3, T37N, R15E, 36.00 chains long, 36.00 chains wide.  
 Original Corner of Sec 3 found in Brown Bros

N 1/4 Sec 3, T37N, R15E, 36.00 chains long, 36.00 chains wide.  
 Original Corner of Sec 3 found in Balsam