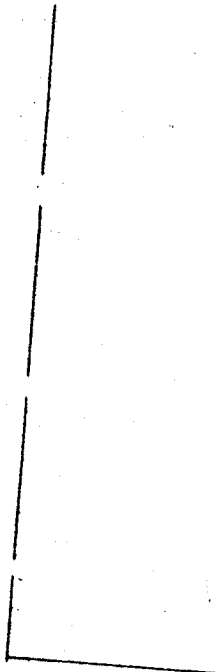
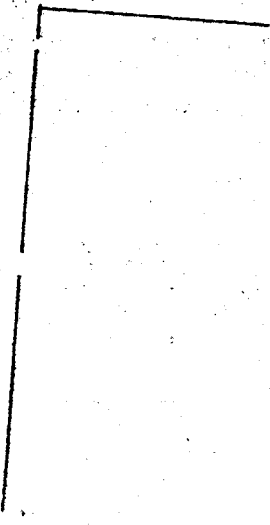


RECEIVED & FILED #.5.3.5.
 Oneida County Surveyor's Office
 Date **SEP 12 1986**
 By *M.A.S.*
 OCS Area #.....

18



DUNN ST.

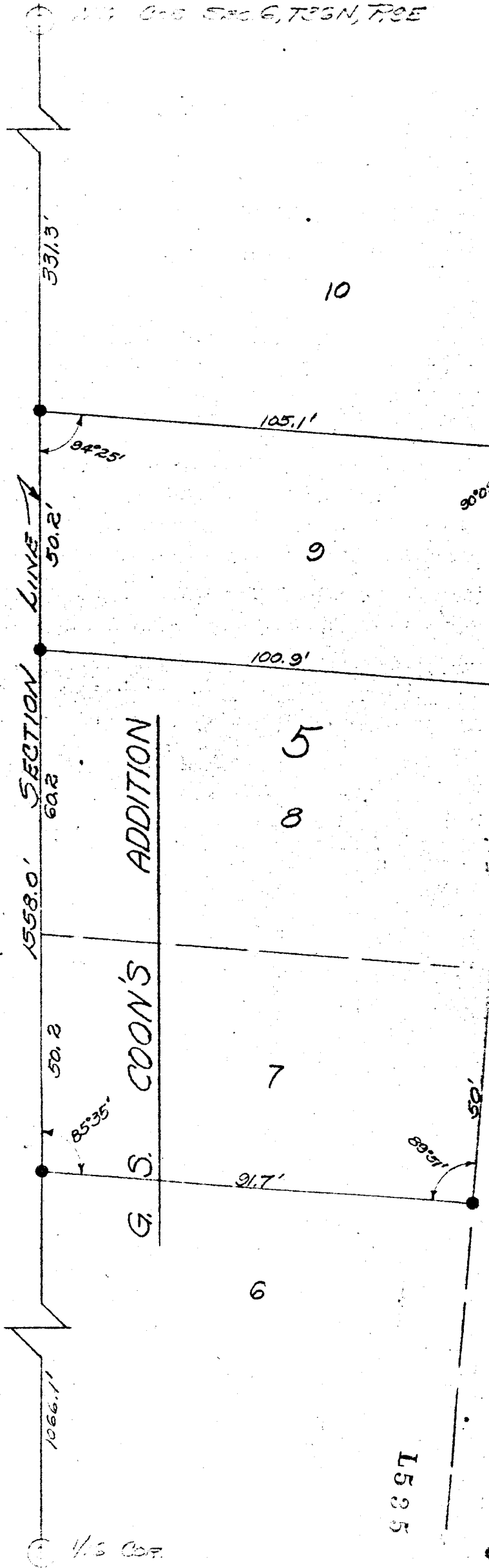


NW-NW 6-36-9

| | |
|--|---|
| | SURVEY OF LOTS 7, 8, 9, 30, 31, 32, 33 G.S. CO. 1985 TO THE CITY OF MINNISCOTT, WIS. |
| | GENISOT ENGINEERING CO. MINNISCOTT, WIS. |

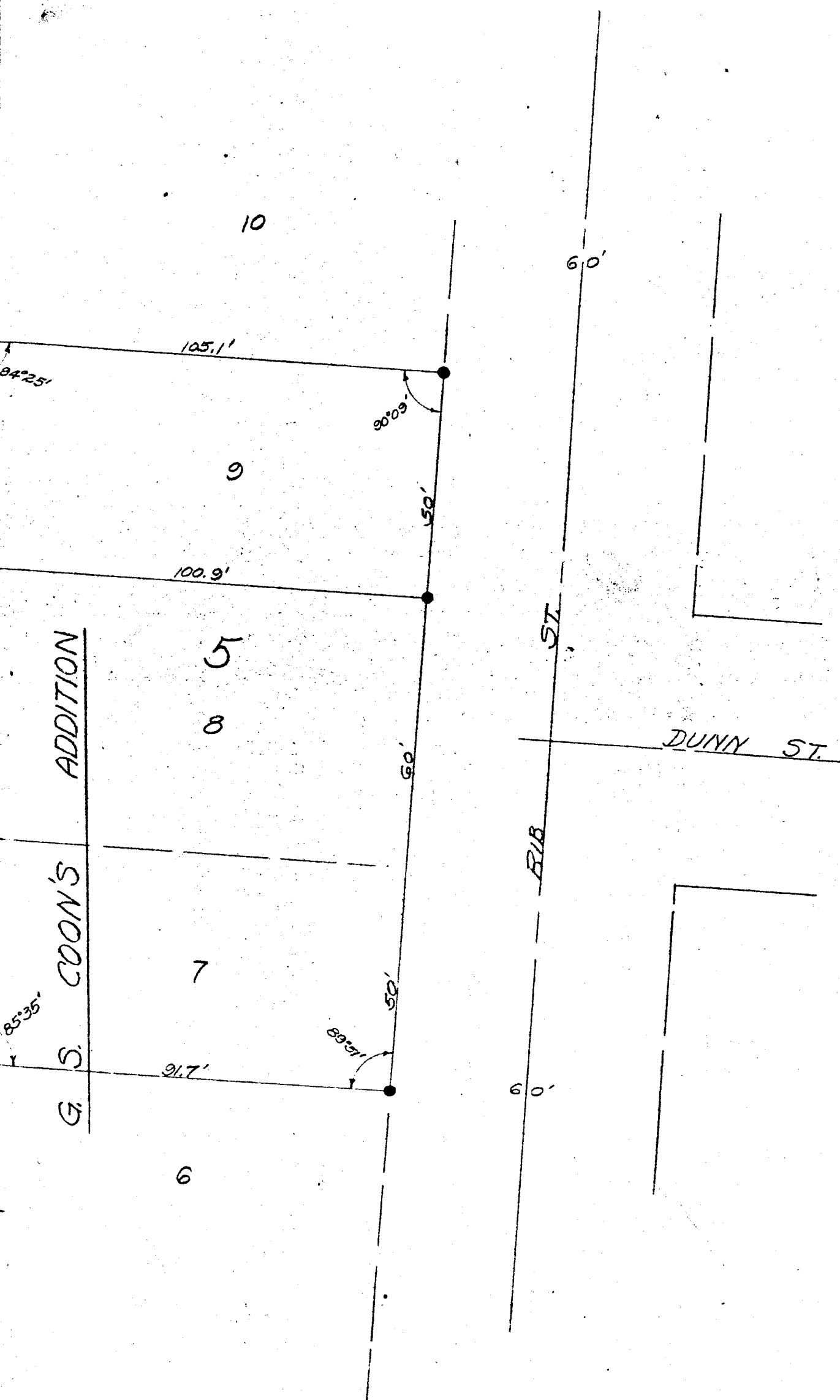
213-103

1/4 COR. SEC. 6, T36N, R9E



1525

N. 1/4 Cor. Sec. 6, T36N, R9E



1/16 Cor.

IRON PIPE

1535