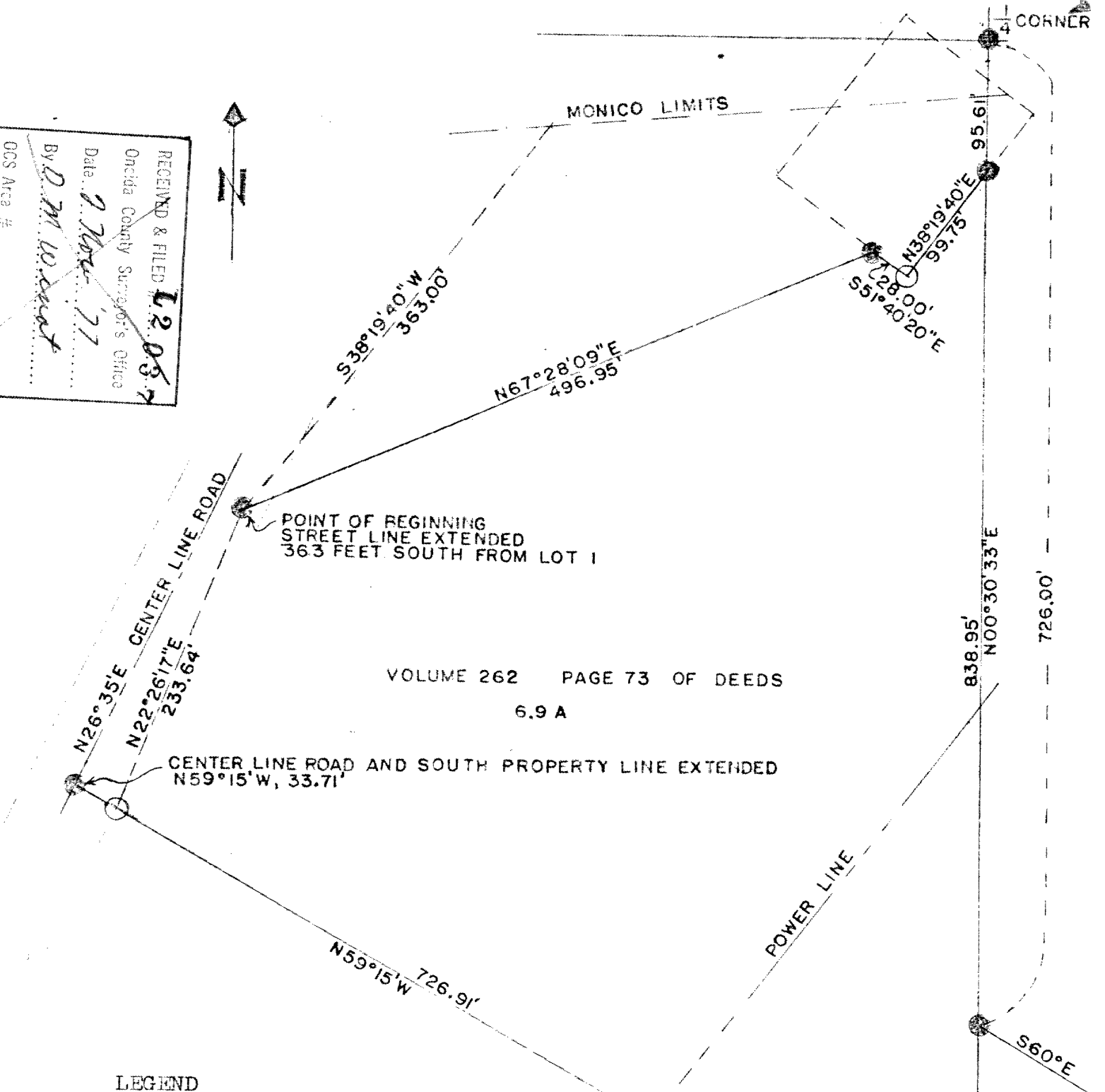


NE - SE

SURVEY FOR LILLIAN TAYLOR OF A PARCEL OF LAND IN ONEIDA COUNTY, WISCONSIN, TOWNSHIP 36 NORTH, RANGE 11 EAST, SECTION 30

RECEIVED & FILED 12.03.77
Oneida County Surveyor's Office
Date 2 Nov 77
By D. M. W. Street
OCS Area #



VOLUME 262 PAGE 73 OF DEEDS
6.9 A

LEGEND

- Scale 1 Inch = 100 feet
- 2 Inch I.D. Iron pipe with Aluminum cap
- Unmarked Property Corner

SURVEYOR'S AFFIDAVIT

State of Wisconsin) ss
County of Oneida)

I, Jean F. Resvick, registered land surveyor in the state of Wisconsin, hereby certify that I have surveyed the parcel of land described on page 73, Volume 262 of Deeds.

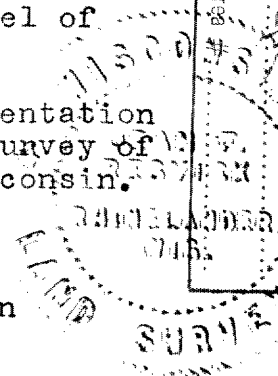
The plat map and the notes hereon are a correct representation of the land surveyed in accordance with the rules of survey of public lands and with the statutes of the State of Wisconsin.

Surveyed in 1975

Jean F. Resvick
Jean F. Resvick

R.L.S. State of Wisconsin
Certificate S-802

RECEIVED & FILED # 1542
Oneida County Surveyor's Office
Date SEP 12 1986
BY D. M. W. Street
OCS Area #



1542