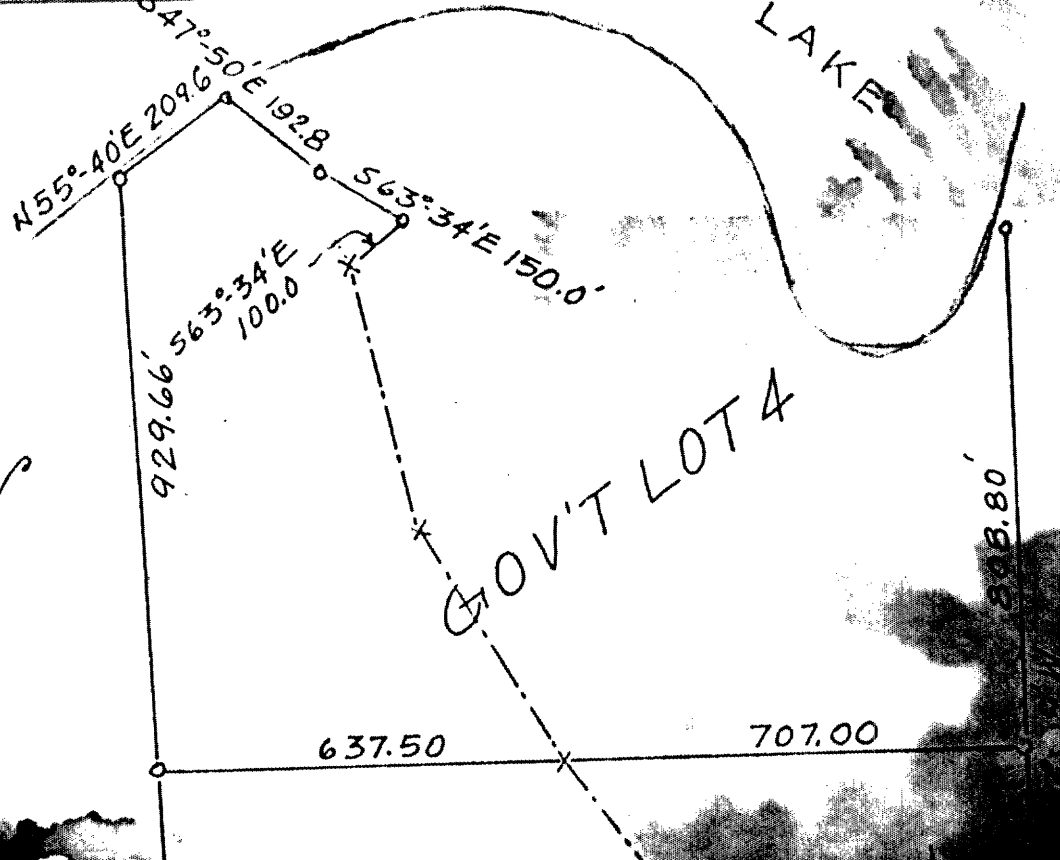


RECEIVED & FILED # 5-5-74
 Oneida County Surveyor's Office
 FEB 2 1987
 Date
 BY M
 OCS

CERTIFIED SURVEY MAP
 OF THE SW 1/4 AND GOV'T LOT
 THE SW 1/4 OF SECTION 15, T34N,
 R6E, CASSIAM, ONEIDA COUNTY, WIS.

ST HORSEHEAD LAKE



SW 1/4 OF THE SW 1/4

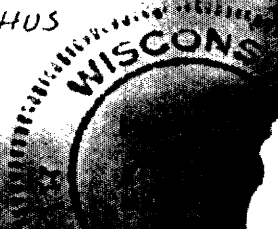
SECTION LINE
 S2°-34'E 1320.00'

16 15
 21 22

N88°-24'E 1310.40
 SECTION LINE

1003.25
 306.85

OF TN ROADS
 INDICATED THUS



1557