

45.68

MAR 2 1987

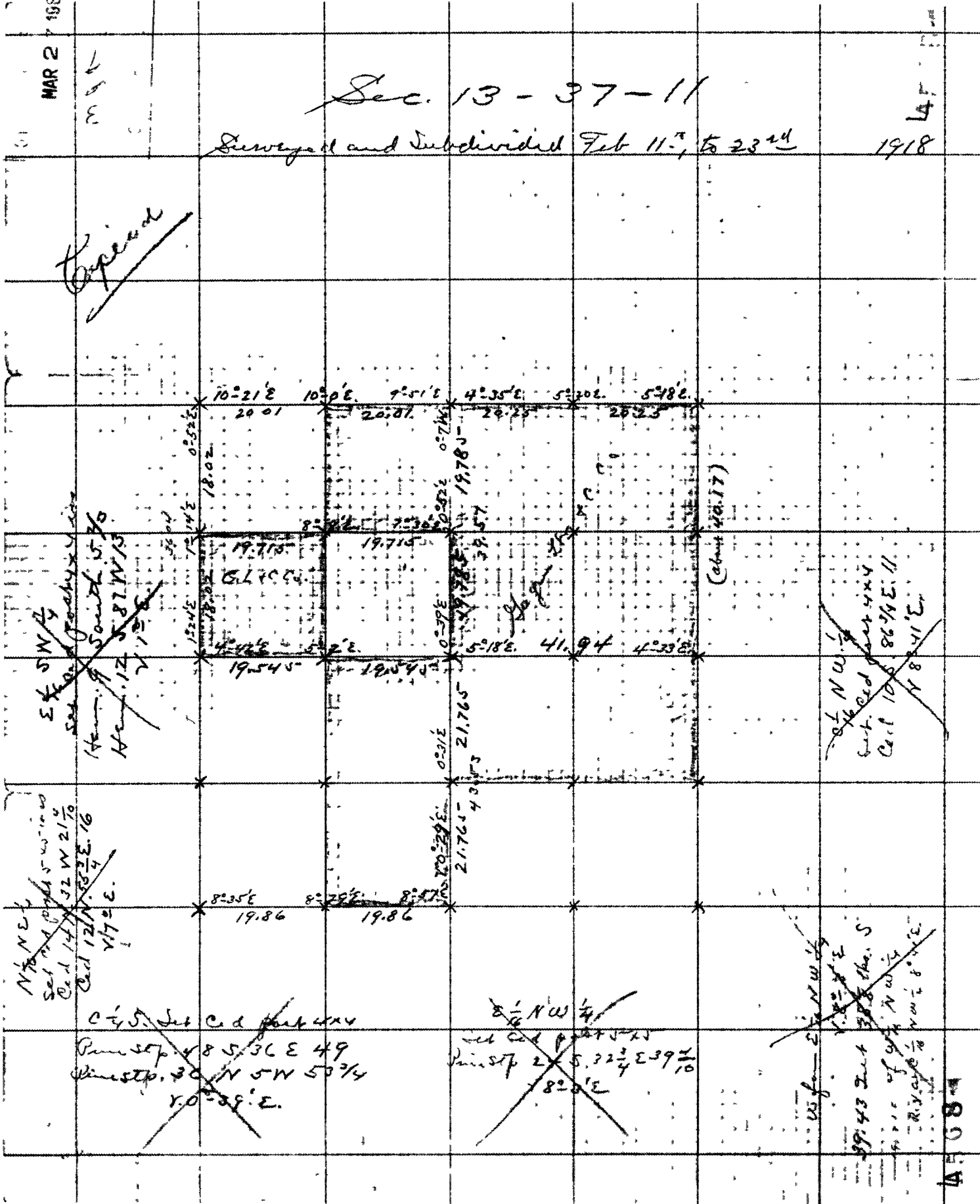
# Sec. 13 - 37 - 11

Surveyed and Subdivided Feb 11<sup>th</sup>, to 23<sup>rd</sup> 1918

45

1918

~~Open~~



~~SW 1/4  
Set of 12/11/18  
Cont. 12/11/18  
179° E.  
12.12  
12.12  
12.12~~

~~N 7/8 NE 1/4  
Set of 12/11/18  
Cont. 12/11/18  
179° E.  
12.12  
12.12~~

~~SW 1/4  
Set of 12/11/18  
Cont. 12/11/18  
179° E.  
12.12  
12.12~~

~~SW 1/4  
Set of 12/11/18  
Cont. 12/11/18  
179° E.  
12.12  
12.12~~

~~SW 1/4  
Set of 12/11/18  
Cont. 12/11/18  
179° E.  
12.12  
12.12~~

45.68

45.68

