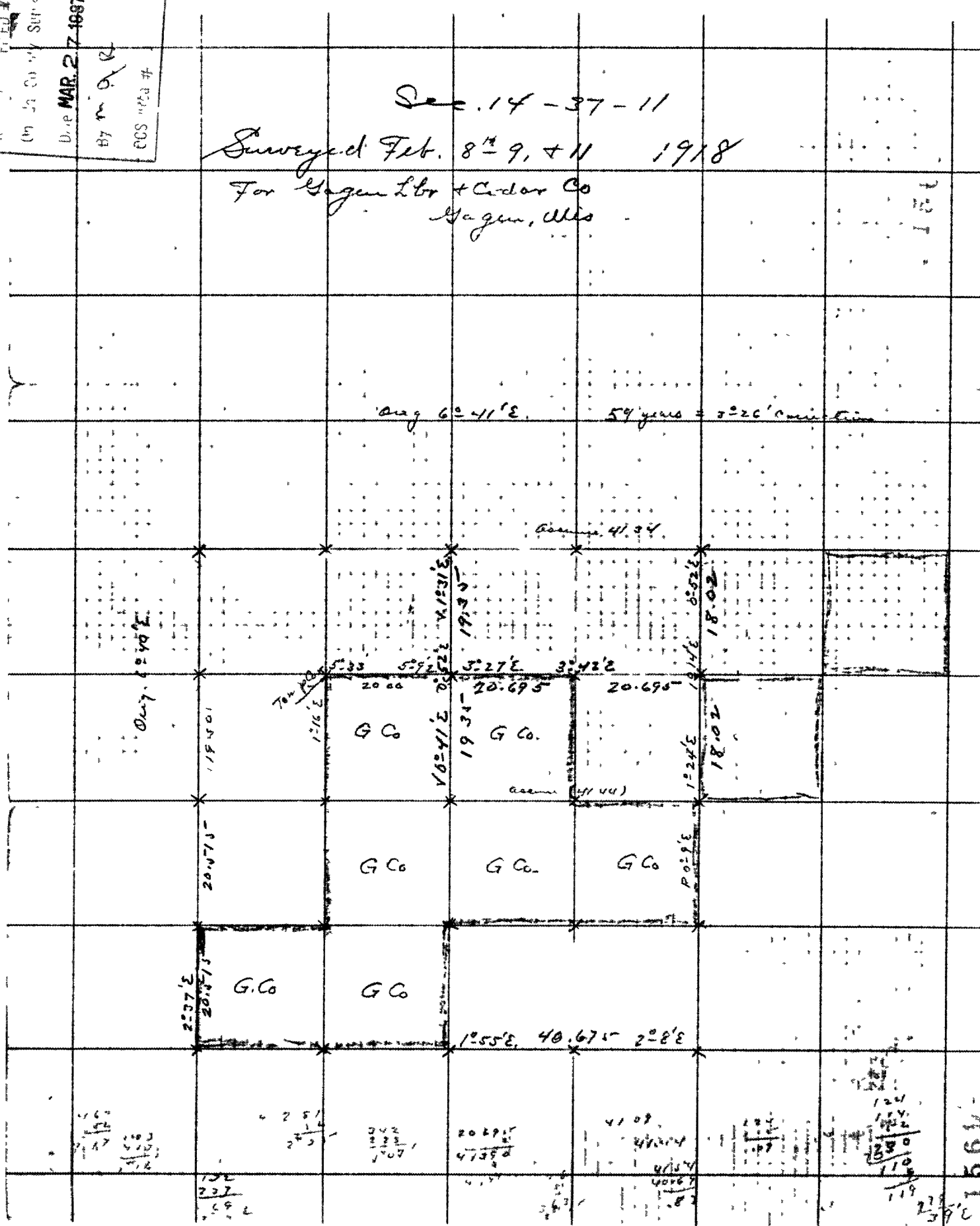


RECORDED FILED 1569  
 (in the County Surveyor's Office,  
 Date MAR. 27 1987  
 By M. O. R.  
 ECS #1003 #

Sec. 14 - 37 - 11

Surveyed Feb. 8<sup>th</sup> 9, + 11 1918  
 For Hagen Lbr + Cedar Co  
 Hagen, Wis



ang 60° 41' E

59 years = 326' cur. line

area = 41.34

ang. 62° 40' E

Town Road  
12° 16' E

G.C.

G.C.

G.C.

G.C.

G.C.

G.C.

G.C.

12° 55' E, 40.675 - 2° 8' E

12° 41' E

18.02

18.02

19° 34' E

19.34

5° 27' E

20.69

3° 42' E

20.69

area = 41.44

2° 37' E

20.775

20.775

19.501

19

$\frac{237}{25}$   
 $\frac{25}{1}$   
 $\frac{237}{25}$

$\frac{237}{25}$   
 $\frac{25}{1}$   
 $\frac{237}{25}$

$\frac{202.5}{25}$   
 $\frac{25}{1}$   
 $\frac{202.5}{25}$

$\frac{202.5}{25}$   
 $\frac{25}{1}$   
 $\frac{202.5}{25}$

$\frac{41.09}{25}$   
 $\frac{25}{1}$   
 $\frac{41.09}{25}$

$\frac{237}{25}$   
 $\frac{25}{1}$   
 $\frac{237}{25}$

$\frac{237}{25}$   
 $\frac{25}{1}$   
 $\frac{237}{25}$

1569

