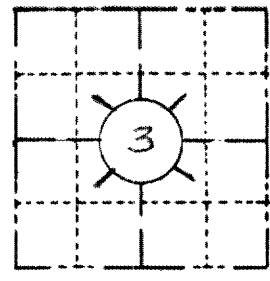


RECEIVED & FILED #... 1588

FIELD SURVEY NOTES
PRESERVATION OF LANDMARKS
 Pursuant to Section 59.635(7) Wisconsin Statutes
 Date: JUN 12 1987
 Oneida County Survey Office
 Oneida County, Wisconsin
 TOWN: HAZELHURST
 HIGHWAY: US 51

SECTION	TOWNSHIP	RANGE
3	38N	6E
TYPE OF LANDMARK		
2" I.P. BY J.H. FISHER S-836		

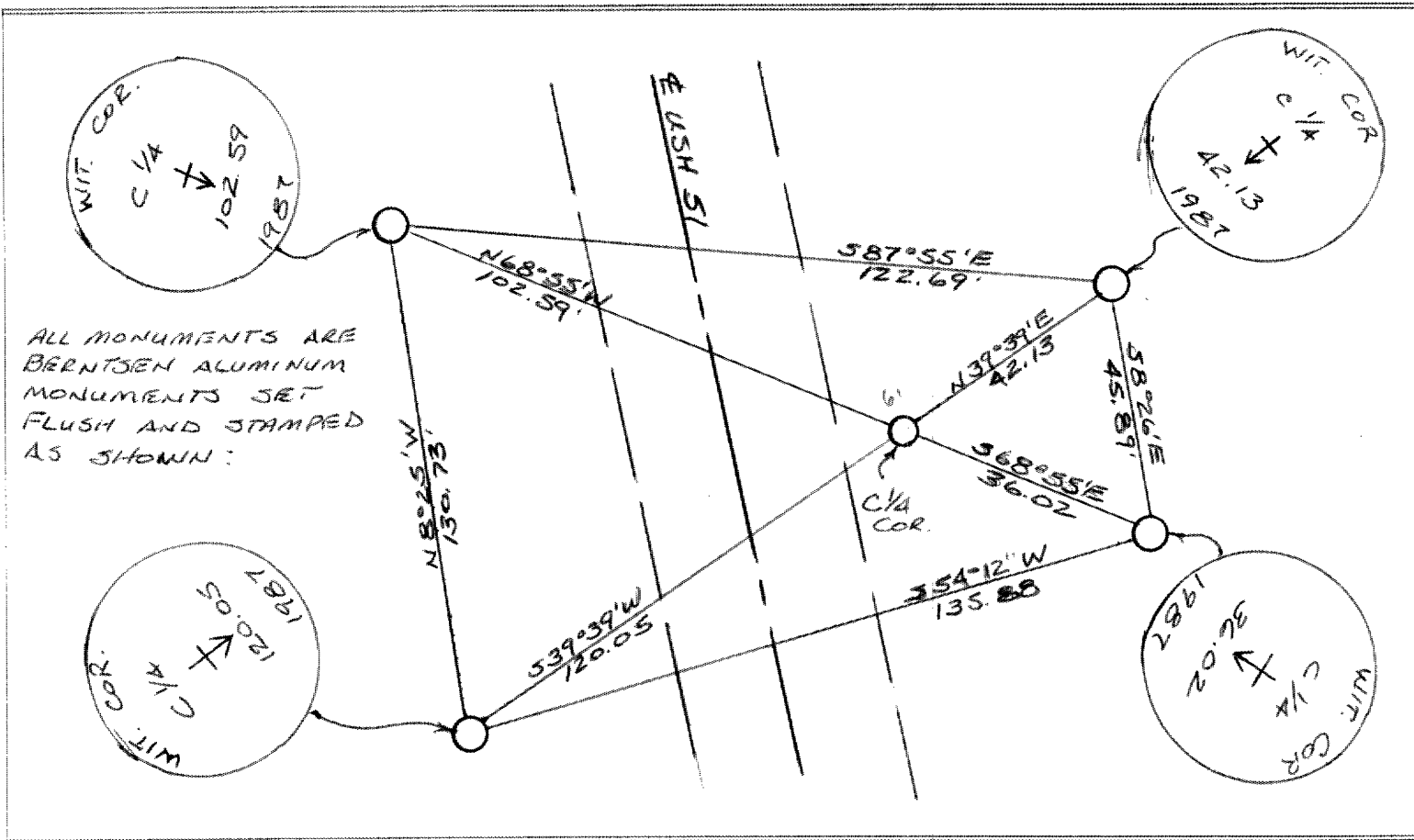


APPARENT CENTER
 1/4 COR.



LOCATION SKETCH
 (Location of landmark indicated by "x")

This space for copy of field notes or ties to the above described landmarks



FILED UNDER PROJECT		1174-08-70 9110-00-76
DISTRICT OFFICE NUMBER	CITY	COUNTY
7	RHINELANDER	ONEIDA
LOCATED OR ESTABLISHED BY		
NAME JACK R. WALLIN		
TITLE SURVEY CREW CHIEF DATE 4-23-87		
under the direction of MICHAEL HESS 500809		

COUNTY CLERK'S OFFICE	
COUNTY OF ONEIDA	WISCONSIN } 55
DATE RECEIVED FOR RECORD	DATE COPY SENT TO COUNTY SURVEYOR
6/12/87	6/12/87
SIGNATURE OF COUNTY CLERK	
A.R. Macdonald	

1588

1588

1588