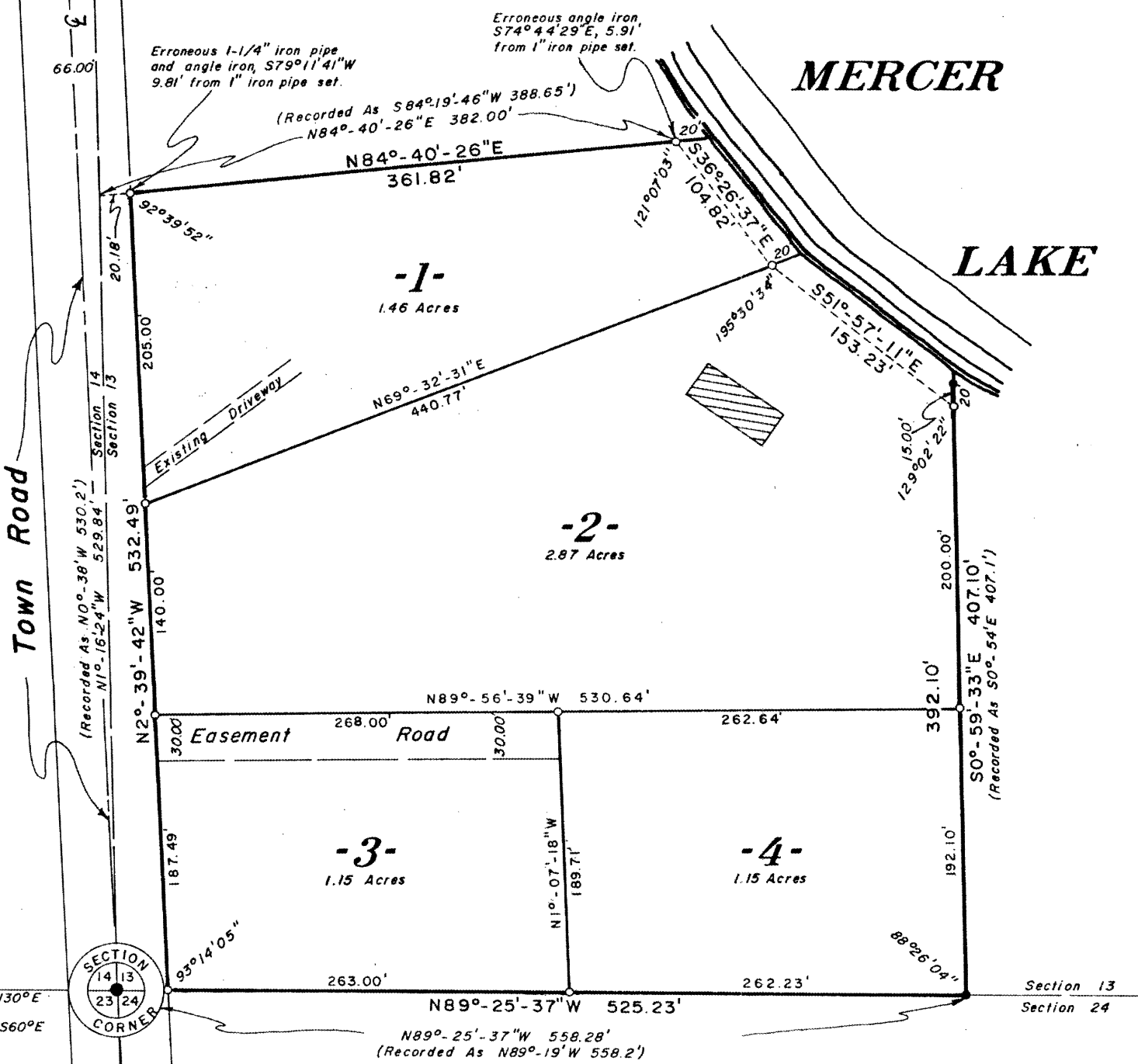
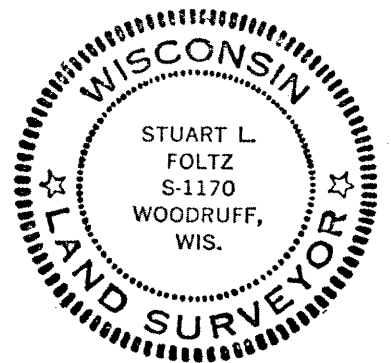


RECEIVED & FILED # **1087**
 Oneida County Surveyor's Office
 Date: *June 17, 1976*
 By: *D.M. Woodruff*
 OCS Area # *13-13-3705*

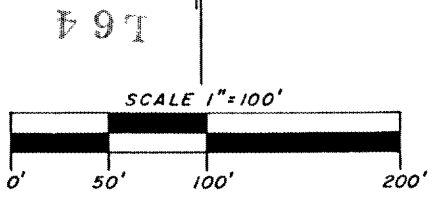
RECEIVED & FILED # **L64**
 Oneida County Surveyor's Office
 Date: **FEB. 11 1986**
 By: *MJH*
 OCS Area #



Part of
GOV'T. LOT 9
SECTION 13, T39N, R5E
 Minocqua Township
 Oneida County, Wis.



- = 1-1/4" Iron Pipe Found in Place.
- = Iron Pipe Set, 1x30" Weighing 1.13 lbs Per Lin. Ft.
- = Angle Iron Found in Place.



Stuart L. Foltz
 Registered Land Surveyor S-1170
 Dated at Minocqua, Wisconsin
 this 9th day of June, 1976.

Fisher, Inman, Foltz
 & Associates Inc.