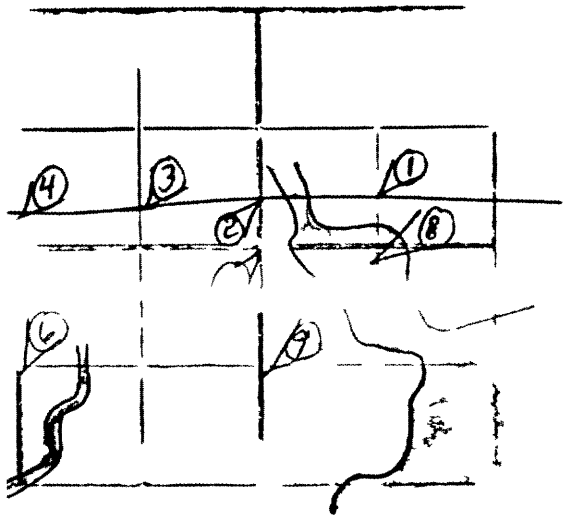


651 39 8

① N¹/₄ NE¹/₄ would be at 20,21 (Was Valley dump Co 1938)

ELEV & E	651
O d c l y S y	Off
J t	JAN 1 1938
By	A K
DC A	#



② N¹/₄ Sec 6 found ong trees (Vaughn 2/2/99) at 39 158 east of NW cor of 40 421 west of NE cor a 2' iron pipe Bolson 6'-N 9 E S 894 ch, PN 6'-S 9 E-1091 ch (Was Valley dump 1938)

③ N¹/₄ NW¹/₄ would be at 18 941 east of NW cor of 20 217 west of N¹/₄ cor (Was Valley dump 1938)

051d

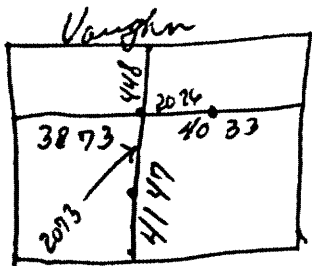
6-39-81601.

6W¹/₄ SW¹/₄ would be at 20 244 1/2 (Uss Valley Map 1938)

Set 1' up 200 South of swamp BT^s PN 8 S29°W 30.15
PN 6 N43°W 13 02 Seymour 6/18/84

3) ctr sec 6

Set ctr of Sect 6 Pine (exp) 15 - North - 0195 ch
(Vaughn 2/2/99)



② N¹/₄ SE¹/₄ at 20 26 1/2 east of ctr sec 6 set 1/8 post PN10 - S21 E - 90
PW 14" - N60° W - 20 ch (Vaughn 2/2/99)

Q) W¹/₄ SE¹/₄ at 20 73 1/2 South of ctr sec 6 28th 1st dist

Pw (step) 28 - N51°E - 0 235ch (Vaughn 2/2/99)