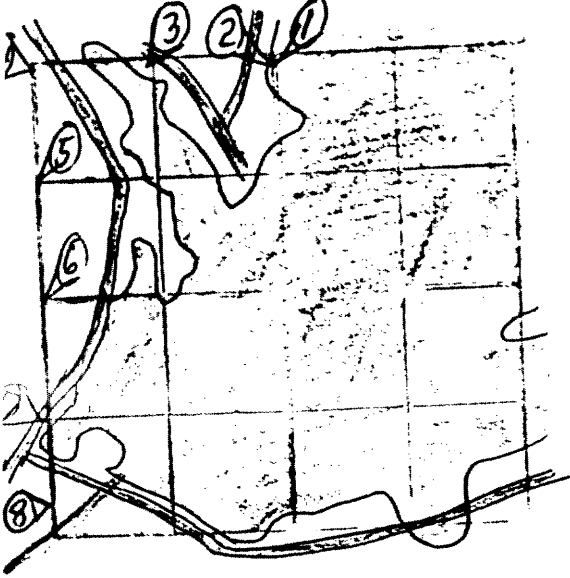


L 675
SEC. 38 ... 39 ... N. P. 8 ... W.

① N¹/₄ Sec 30 Would be at 39.964

each way. (Wis. Valley Dmp 1938)

RECEIVED & FILED	L 675
Onida County Surveyor's Office	
Date	JAN. 1 1988
By	M.A.R.
OCS Area #	



② Meander Cor. - North line - West of Slough at 39.464 east of NW cor

or 0.30 miles west of N¹/₄ cor. 2" iron pipe. PN 15" - S 9° E - 0.788 ch.; oak 2" S 78° W - 0.618 ch. (Wis. Valley Dmp 1938)

③ N¹/₄ NW¹/₄ Would be at 19.482 (Wis. Valley Dmp 1938)

④ NW cor. Sec 30 at ~~39~~ 39.964 west of N $\frac{1}{4}$ & 40.150 north of
W $\frac{1}{4}$ cor. found old post. PN 16" - S 82° E - 0.546 ch.; PN 14" - S 89° W -
0.280 ch. (Wis. Valley Imp. 1938)
See corner file

⑤ W $\frac{1}{4}$ NW $\frac{1}{4}$ would be at 20.075 (Wis. Valley Imp. 1938)
loc. falls in creek

⑥ W $\frac{1}{4}$ Sec 30 at 40.150 south of NW cor. & 40.152 north of SW cor. found
old post. 2" iron pipe. Oak 11" - S 89° E - 0.602 ch.; PW 13" - N 15° W -
1.703 ch. (Wis. Valley Imp. 1938)
See corner file

⑦ W $\frac{1}{4}$ SW $\frac{1}{4}$ would be at 20.077
set 1" i.p. west of "E" BT^s BW 10" N 23° E 86.63'
OR 4" N 61° E 46.35' Seymour 6/13/84

⑧ Wit. 20' N of cor See corner file