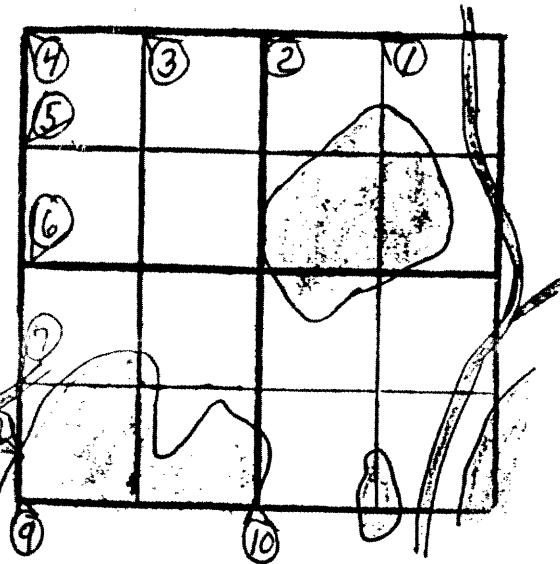


SEC. 24 T. 38 N. R. 8 E. W.

① N¹/₄ NE¹/₄ at 20.729

RECEIVED & FILED
 Onida County Surveyor's Office
 Date Jan 4 1983
 By P. W.
 OCS Area #.....

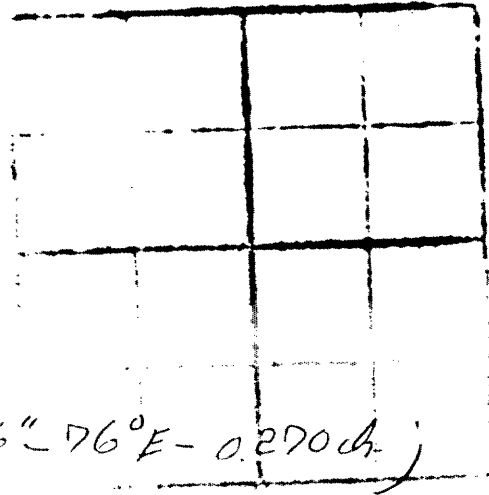
PW 5" - N38° E - 0.545 ch.
 0.290 ch.; Tom. 5" - S4° E - 0.690 ch.
 4/4/60)



② N¹/₄ Sec 24 at 41.458 each way set new ¹/₄ cor. No sign of cgl.
 PW 12" - S7° E - 2.805 ch.; Tom. 4" - N40° E - 0.450 ch. (Remain 4/4/60)

③ N¹/₄ NW¹/₄ at 20.729 set ¹/₈ cor. PN 11" - S34° E - 0.80 ch;
 MS 5" - S53° W - 0.540 ch. (Remain 4/4/60)

4) NW cor. Sec 24 The O.B.T. listed for this corner belong to NW cor.
Sec 23 & vice versa (Dover 11/19/97)



5) W¹/₄ NW¹/₄ at 20.011 1" iron pipe. PW 16" - 76° E - 0.270 ch.;
MS 10" - S 22° W - 0.140 ch. (Nelson 1954)

6) W¹/₄ Sec 24 No sign of o.g.l. corner. Set 1" iron pipe. Tem. 6" - N 24° E -
0.600 ch.; Tem. 6" - S 16° W - 0.960 ch. (Nelson 1954)

7) W¹/₄ SW¹/₄ at 20.011 south of W¹/₄ cor of 7.903 north of M.C. 1"
iron pipe. PN 10" - N 44° E - 1.500 ch.; BW 12" - N 48° W - 1.130 ch.
(Nelson 1954) '63 to '65 Bill Wood set new pipe from B.T.'s

⑧ Meander Cor - West line - North of Spider Lake Corner is 7.903 south of '8
 'or of 12.108 north of sec. corner in lake. (Nelson 1954)

⑨ SW Cor. sec 24 Corner in lake N 7° 25' E - 2980 from orig west M.C.
 (Nelson 1954)

⑩ S 1/4 Sec 24

④ Mendocino Co - North Line - West of Clear

⑤ NW Cor. Sec 11

⑥ W 1/4 NW 1/4

⑦ W 1/4 Sec 11 Pine (stip.) 10" - N 27° E - 0.615 ch.; MS 8" -
S 71° W - 0.170 ch.; Bw 8" - S 27° W - 0.240 (2. 9/22/59)

Sec 24, 38-8 ^{L 699}

⑧ Meander Cor - West line - North of Spauldine Lake Corner is 7.903 south of $\frac{1}{8}$ cor of 12.108 north of sec. corner in lake. (Nelson 1954)

⑨ SW Cor. sec. 24 Corner in lake $N 7^{\circ} 25' E$ - 2.980 from orig west M.C.
(Nelson 1954)

⑩ S $\frac{1}{4}$ sec 24
two cor. locations here

⑪ W.M.C., Tim Lynn Lake - found 2" i.p. and orig. wood post (as also found by Vaughn), use wood post for corner as B.T.'s check to it.

L699^m

Sec 24, 38-8
L699^m

① Meander Cr - West line - North of Fischer Lake Corner is 7.903 south of '8
or of 12.108 north of sec. Corner in lake. (Nelson 1954)

② SW Cor. sec 24 Corner in lake N 7° 25' E - 2980 from orig west MC.
(Nelson 1954)

⑩ S 1/4 sec 24

L699^m

L699^m