

Highway 8 east of Rhineland

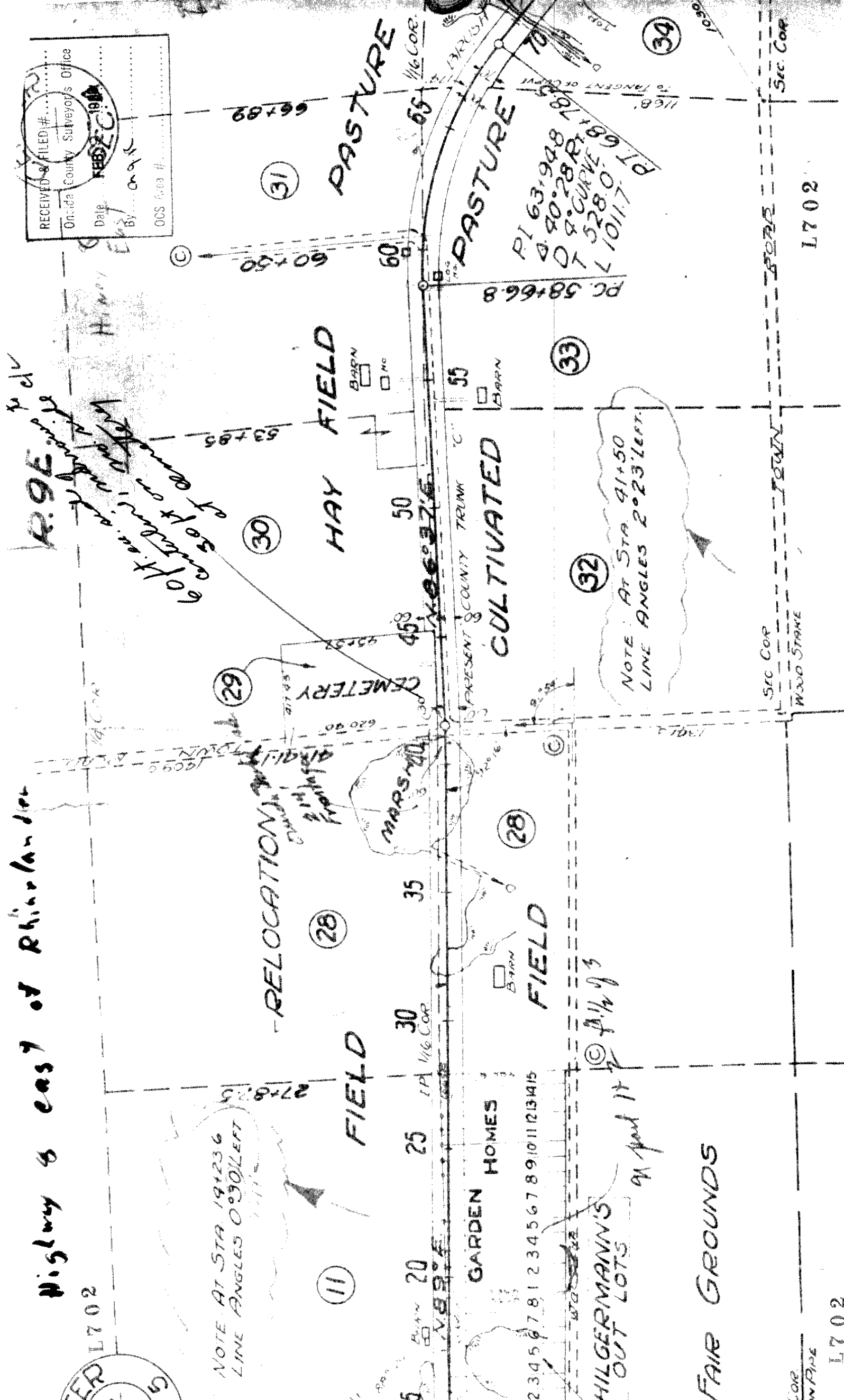
L702

RECEIVED & FILED #
 Onida County Surveyor's Office
 Date: FEB 23 1964
 By: [Signature]
 OCS Area #

*R.9E to div
 60 conts of
 10 conts of
 10 conts of
 10 conts of*

NOTE AT STA 19+23.6
 LINE ANGLES 0°30' LEFT

HILGERMANN'S
 OUT LOTS
 91 April 14



L702

SEC COR
WOOD STAKE

SEC COR
BARN

L702

SEC COR