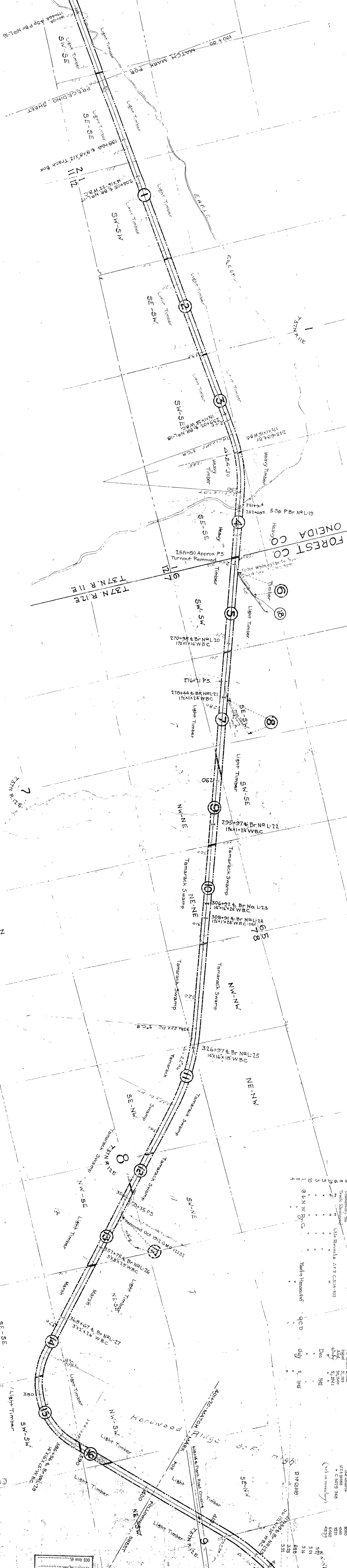


PLATTED RAY 18571, 1816
 PLATTED RAY 18571, 1816
 CHICAGO RAY, DEC 4, 1916



Sheet No. 2 of 3 C & N.W. Ry
 from Survey Station 192900
 to Survey Station 401+50
 Violation Engineer

RIGHT OF WAY AND TRACK MAP
 CHICAGO AND NORTH-WESTERN RAILWAY
 OPERATED BY THE
 C. & N.W. RY. CO.
 ASHLAND DIVISION
 FOREST COUNTY
 HILES JCT., WIS. TO HILES MILL, WIS.
 SCALE: 1 IN. = 400 FT.
 JUNE 30, 1917
 OFFICE OF CHIEF ENGINEER
 CHICAGO, ILL.

WIS
 1854D
 7