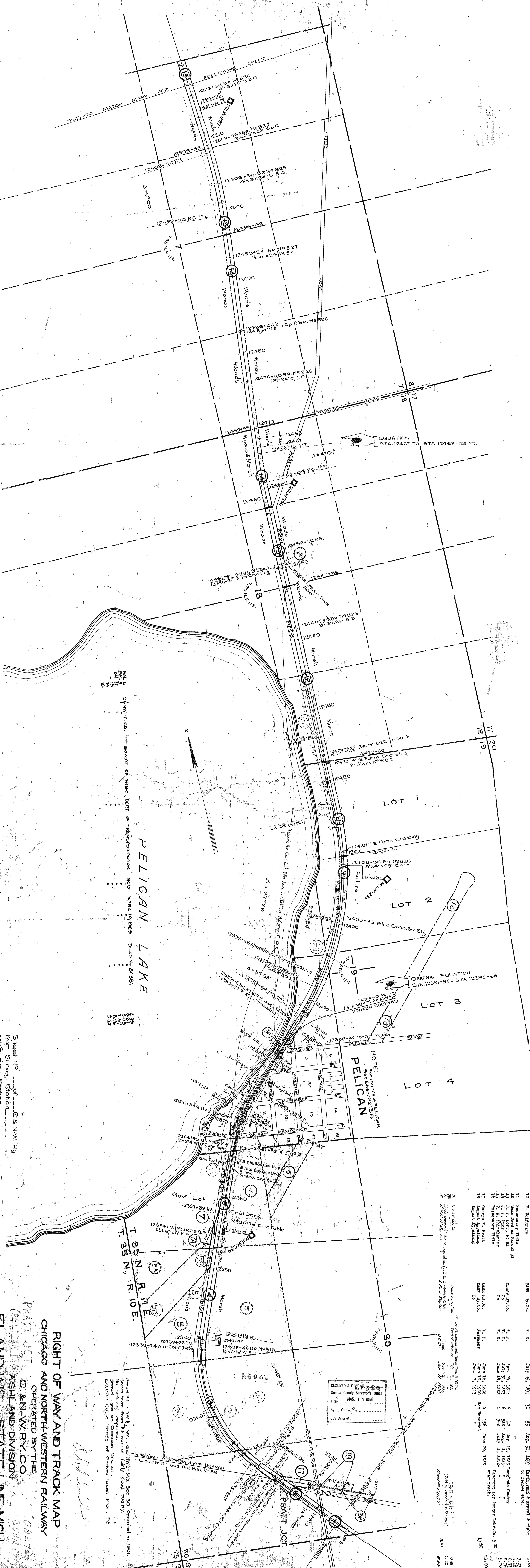


PLANTED - R.C.C. - SEPT 9, 1916
 TRACKED - V.W.C. - OCT 6, 1916
 CHECKED - R.M.L. - MARCH 29, 1917



No.	OWNER	INSTRUMENT	DATE	RECORD	REMARKS	AREA	NAME
1	Trak Demol	MECH 29	November 3, 1906	108			
2	C&N.W.Ry. Co.	Deed	September 29, 1905	104			
3	Trak Demol	MECH 29	December 31, 1904	105			
4	Trak Demol	MECH 29	December 31, 1904	106			
5	Trak Demol	MECH 29	December 31, 1904	107			
6	Trak Demol	MECH 29	December 31, 1904	108			
7	Trak Demol	MECH 29	December 31, 1904	109			
8	Trak Demol	MECH 29	December 31, 1904	110			
9	Trak Demol	MECH 29	December 31, 1904	111			
10	Trak Demol	MECH 29	December 31, 1904	112			
11	Trak Demol	MECH 29	December 31, 1904	113			
12	Trak Demol	MECH 29	December 31, 1904	114			
13	Trak Demol	MECH 29	December 31, 1904	115			
14	Trak Demol	MECH 29	December 31, 1904	116			
15	Trak Demol	MECH 29	December 31, 1904	117			
16	Trak Demol	MECH 29	December 31, 1904	118			
17	Trak Demol	MECH 29	December 31, 1904	119			
18	Trak Demol	MECH 29	December 31, 1904	120			
19	Trak Demol	MECH 29	December 31, 1904	121			
20	Trak Demol	MECH 29	December 31, 1904	122			
21	Trak Demol	MECH 29	December 31, 1904	123			
22	Trak Demol	MECH 29	December 31, 1904	124			
23	Trak Demol	MECH 29	December 31, 1904	125			
24	Trak Demol	MECH 29	December 31, 1904	126			
25	Trak Demol	MECH 29	December 31, 1904	127			
26	Trak Demol	MECH 29	December 31, 1904	128			
27	Trak Demol	MECH 29	December 31, 1904	129			
28	Trak Demol	MECH 29	December 31, 1904	130			
29	Trak Demol	MECH 29	December 31, 1904	131			
30	Trak Demol	MECH 29	December 31, 1904	132			
31	Trak Demol	MECH 29	December 31, 1904	133			
32	Trak Demol	MECH 29	December 31, 1904	134			
33	Trak Demol	MECH 29	December 31, 1904	135			
34	Trak Demol	MECH 29	December 31, 1904	136			
35	Trak Demol	MECH 29	December 31, 1904	137			
36	Trak Demol	MECH 29	December 31, 1904	138			
37	Trak Demol	MECH 29	December 31, 1904	139			
38	Trak Demol	MECH 29	December 31, 1904	140			
39	Trak Demol	MECH 29	December 31, 1904	141			
40	Trak Demol	MECH 29	December 31, 1904	142			
41	Trak Demol	MECH 29	December 31, 1904	143			
42	Trak Demol	MECH 29	December 31, 1904	144			
43	Trak Demol	MECH 29	December 31, 1904	145			
44	Trak Demol	MECH 29	December 31, 1904	146			
45	Trak Demol	MECH 29	December 31, 1904	147			
46	Trak Demol	MECH 29	December 31, 1904	148			
47	Trak Demol	MECH 29	December 31, 1904	149			
48	Trak Demol	MECH 29	December 31, 1904	150			
49	Trak Demol	MECH 29	December 31, 1904	151			
50	Trak Demol	MECH 29	December 31, 1904	152			
51	Trak Demol	MECH 29	December 31, 1904	153			
52	Trak Demol	MECH 29	December 31, 1904	154			
53	Trak Demol	MECH 29	December 31, 1904	155			
54	Trak Demol	MECH 29	December 31, 1904	156			
55	Trak Demol	MECH 29	December 31, 1904	157			
56	Trak Demol	MECH 29	December 31, 1904	158			
57	Trak Demol	MECH 29	December 31, 1904	159			
58	Trak Demol	MECH 29	December 31, 1904	160			
59	Trak Demol	MECH 29	December 31, 1904	161			
60	Trak Demol	MECH 29	December 31, 1904	162			
61	Trak Demol	MECH 29	December 31, 1904	163			
62	Trak Demol	MECH 29	December 31, 1904	164			
63	Trak Demol	MECH 29	December 31, 1904	165			
64	Trak Demol	MECH 29	December 31, 1904	166			
65	Trak Demol	MECH 29	December 31, 1904	167			
66	Trak Demol	MECH 29	December 31, 1904	168			
67	Trak Demol	MECH 29	December 31, 1904	169			
68	Trak Demol	MECH 29	December 31, 1904	170			
69	Trak Demol	MECH 29	December 31, 1904	171			
70	Trak Demol	MECH 29	December 31, 1904	172			
71	Trak Demol	MECH 29	December 31, 1904	173			
72	Trak Demol	MECH 29	December 31, 1904	174			
73	Trak Demol	MECH 29	December 31, 1904	175			
74	Trak Demol	MECH 29	December 31, 1904	176			
75	Trak Demol	MECH 29	December 31, 1904	177			
76	Trak Demol	MECH 29	December 31, 1904	178			
77	Trak Demol	MECH 29	December 31, 1904	179			
78	Trak Demol	MECH 29	December 31, 1904	180			
79	Trak Demol	MECH 29	December 31, 1904	181			
80	Trak Demol	MECH 29	December 31, 1904	182			
81	Trak Demol	MECH 29	December 31, 1904	183			
82	Trak Demol	MECH 29	December 31, 1904	184			
83	Trak Demol	MECH 29	December 31, 1904	185			
84	Trak Demol	MECH 29	December 31, 1904	186			
85	Trak Demol	MECH 29	December 31, 1904	187			
86	Trak Demol	MECH 29	December 31, 1904	188			
87	Trak Demol	MECH 29	December 31, 1904	189			
88	Trak Demol	MECH 29	December 31, 1904	190			
89	Trak Demol	MECH 29	December 31, 1904	191			
90	Trak Demol	MECH 29	December 31, 1904	192			
91	Trak Demol	MECH 29	December 31, 1904	193			
92	Trak Demol	MECH 29	December 31, 1904	194			
93	Trak Demol	MECH 29	December 31, 1904	195			
94	Trak Demol	MECH 29	December 31, 1904	196			
95	Trak Demol	MECH 29	December 31, 1904	197			
96	Trak Demol	MECH 29	December 31, 1904	198			
97	Trak Demol	MECH 29	December 31, 1904	199			
98	Trak Demol	MECH 29	December 31, 1904	200			
99	Trak Demol	MECH 29	December 31, 1904	201			
100	Trak Demol	MECH 29	December 31, 1904	202			

RIGHT OF WAY AND TRACK MAP
 CHICAGO AND NORTH-WESTERN RAILWAY
 OPERATED BY THE
 C. & N.W. RY. CO.
 ASHLAND DIVISION
 ELAND WIS. TO STATE LINE, MICH.
 STA. _____ TO STA. _____
 SCALE 1 IN. = 400 FT.
 JUNE 30, 1917.
 OFFICE OF CHIEF ENGINEER
 CHICAGO, ILL.

VALUATION ENGINEER

WIS. V. 54
 18