

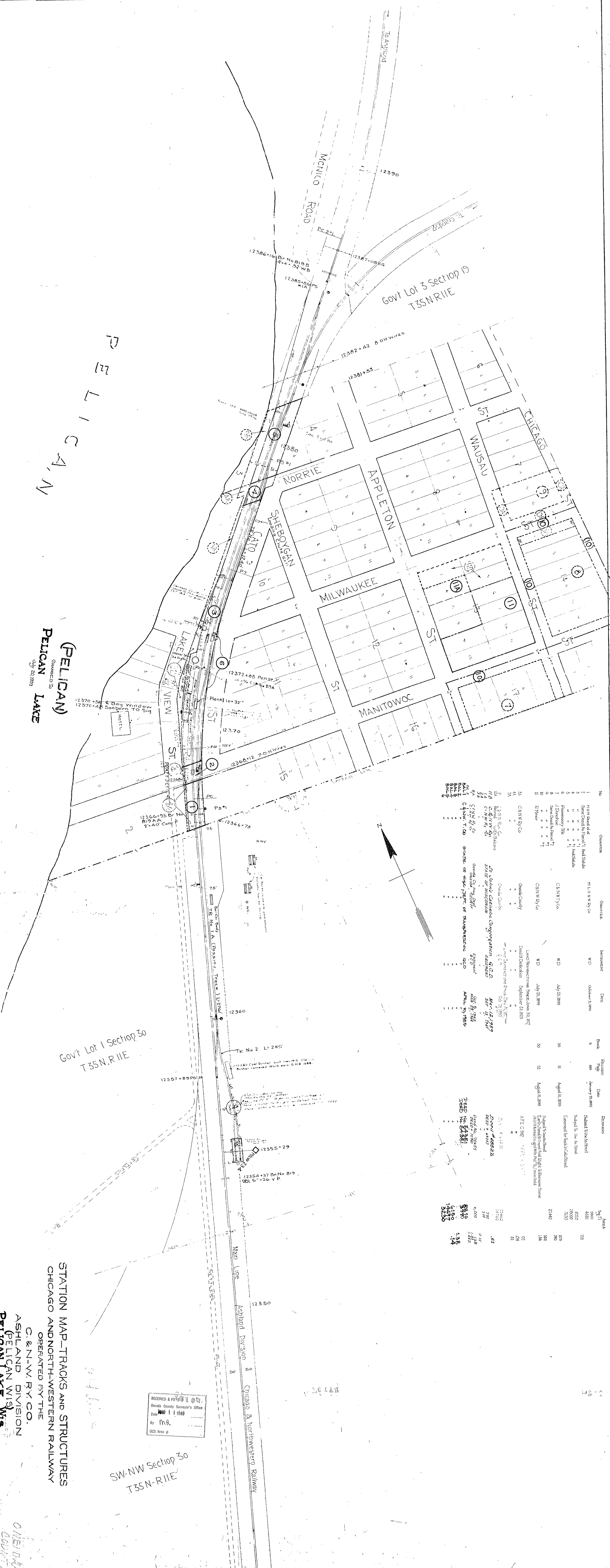
Plotted RGC Oct. 1916
 Traced FVCC Oct. 5, 1916
 Checked RAC Oct. 17, 1916

PELICAN

(PELICAN)
 CHANGED TO
 PELICAN LAKE
 July 20, 1933

Gov't Lot 1 Sectop 30
 T35N,R11E

Gov't Lot 3 Sectop 19
 T35N,R11E



No	GRANTOR	GRANTEE	INSTRUMENT	DATE	Book	Page	Remarks	Sq. Ft.
1	High Road et al	High Road et al	WD	October 3, 1891	6	80	Subject to the Ashland	4000
2	Same as above	High Road et al	WD	October 3, 1891	6	81	Subject to the Ashland	4000
3	"	"	WD	October 3, 1891	6	82	Subject to the Ashland	4000
4	"	"	WD	October 3, 1891	6	83	Subject to the Ashland	4000
5	"	"	WD	October 3, 1891	6	84	Subject to the Ashland	4000
6	Provisionary Title	CANW Ry Co	WD	July 25, 1893	30	51	Essential for fish catchment	3200
7	Provisionary Title	CANW Ry Co	WD	July 25, 1893	30	52	Essential for fish catchment	3200
8	Provisionary Title	CANW Ry Co	WD	July 25, 1893	30	53	Essential for fish catchment	3200
9	Provisionary Title	CANW Ry Co	WD	July 25, 1893	30	54	Essential for fish catchment	3200
10	Provisionary Title	CANW Ry Co	WD	July 25, 1893	30	55	Essential for fish catchment	3200
11	Provisionary Title	CANW Ry Co	WD	July 25, 1893	30	56	Essential for fish catchment	3200
12	Provisionary Title	CANW Ry Co	WD	July 25, 1893	30	57	Essential for fish catchment	3200
13	Provisionary Title	CANW Ry Co	WD	July 25, 1893	30	58	Essential for fish catchment	3200
14	Provisionary Title	CANW Ry Co	WD	July 25, 1893	30	59	Essential for fish catchment	3200
15	Provisionary Title	CANW Ry Co	WD	July 25, 1893	30	60	Essential for fish catchment	3200

RECEIVED & FILED
 Okech County Surveyor's Office
 Date MAR 1 1893
 By MR
 OCS Area #

STATION MAP TRACKS AND STRUCTURES
 CHICAGO AND NORTH-WESTERN RAILWAY
 OPERATED BY THE
 C. & N.W. RY. CO.
 ASHLAND DIVISION
 PELICAN LAKE WIS
 PELICAN LAKE WIS
 TO STA. 12550+00
 FROM STA. 12590+00

SCALE 1" = 100 FT.
 OFFICE OF CHIEF ENGINEER
 CHICAGO, ILL. JUNE 30, 1917.

WIS
 V-54
 138