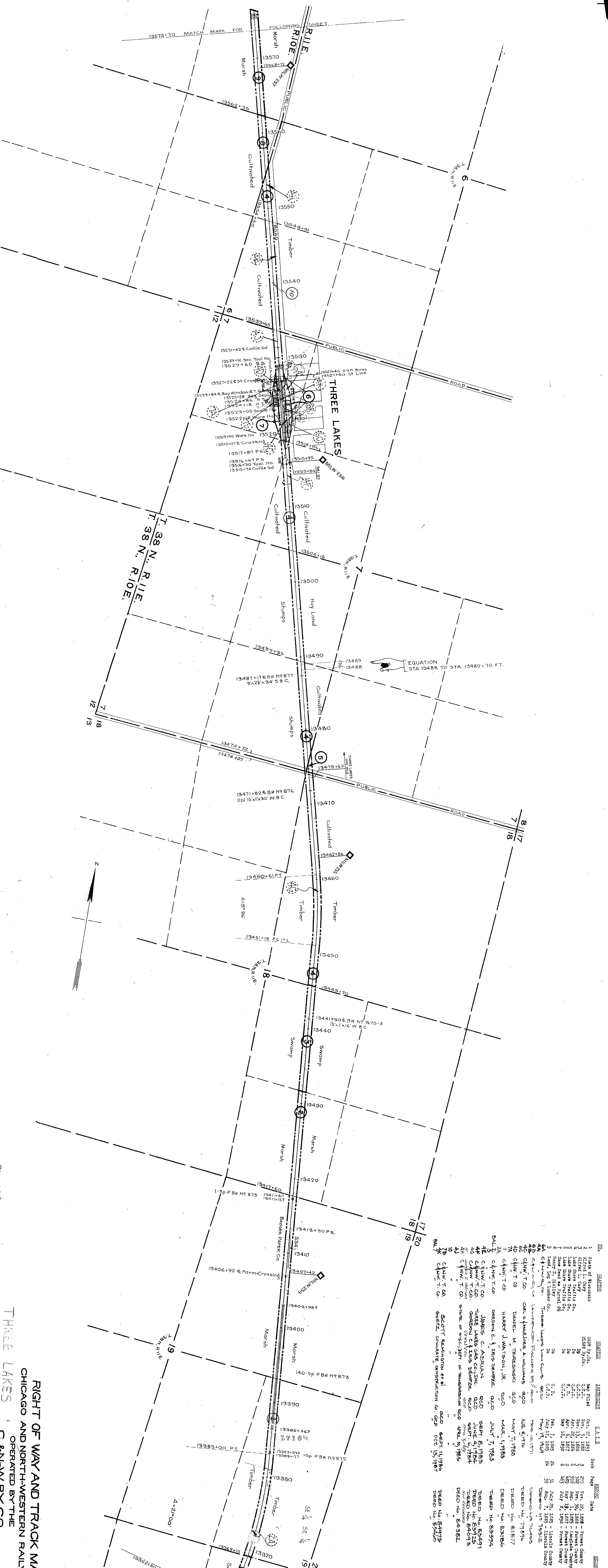


PLATTED - CIVIL - SEPT. 19, 1916
 TRACED - CIVIL - OCT. 5, 1916
 CHECKED - CIVIL - OCT. 14, 1916



NO.	OWNER	DATE	RECORD	REMARKS
1	State of Wisconsin	1835	1835	
2	Alfred L. Cary	1835	1835	
3	John L. Cary	1835	1835	
4	John L. Cary	1835	1835	
5	John L. Cary	1835	1835	
6	John L. Cary	1835	1835	
7	John L. Cary	1835	1835	
8	John L. Cary	1835	1835	
9	John L. Cary	1835	1835	
10	John L. Cary	1835	1835	
11	John L. Cary	1835	1835	
12	John L. Cary	1835	1835	
13	John L. Cary	1835	1835	
14	John L. Cary	1835	1835	
15	John L. Cary	1835	1835	
16	John L. Cary	1835	1835	
17	John L. Cary	1835	1835	
18	John L. Cary	1835	1835	
19	John L. Cary	1835	1835	
20	John L. Cary	1835	1835	
21	John L. Cary	1835	1835	
22	John L. Cary	1835	1835	
23	John L. Cary	1835	1835	
24	John L. Cary	1835	1835	
25	John L. Cary	1835	1835	
26	John L. Cary	1835	1835	
27	John L. Cary	1835	1835	
28	John L. Cary	1835	1835	
29	John L. Cary	1835	1835	
30	John L. Cary	1835	1835	
31	John L. Cary	1835	1835	
32	John L. Cary	1835	1835	
33	John L. Cary	1835	1835	
34	John L. Cary	1835	1835	
35	John L. Cary	1835	1835	
36	John L. Cary	1835	1835	
37	John L. Cary	1835	1835	
38	John L. Cary	1835	1835	
39	John L. Cary	1835	1835	
40	John L. Cary	1835	1835	
41	John L. Cary	1835	1835	
42	John L. Cary	1835	1835	
43	John L. Cary	1835	1835	
44	John L. Cary	1835	1835	
45	John L. Cary	1835	1835	
46	John L. Cary	1835	1835	
47	John L. Cary	1835	1835	
48	John L. Cary	1835	1835	
49	John L. Cary	1835	1835	
50	John L. Cary	1835	1835	

RIGHT OF WAY AND TRACK MAP
 CHICAGO AND NORTH-WESTERN RAILWAY
 OPERATED BY THE
 C. & N.W. RY. CO.
 ASHLAND DIVISION
 ELAND, WIS. TO STATE LINE, MICH.
 TO STA.
 STA.
 SCALE: 1 IN. = 400 FT.
 JUNE 30, 1917
 OFFICE OF CHIEF ENGINEER
 CHICAGO, ILL.

