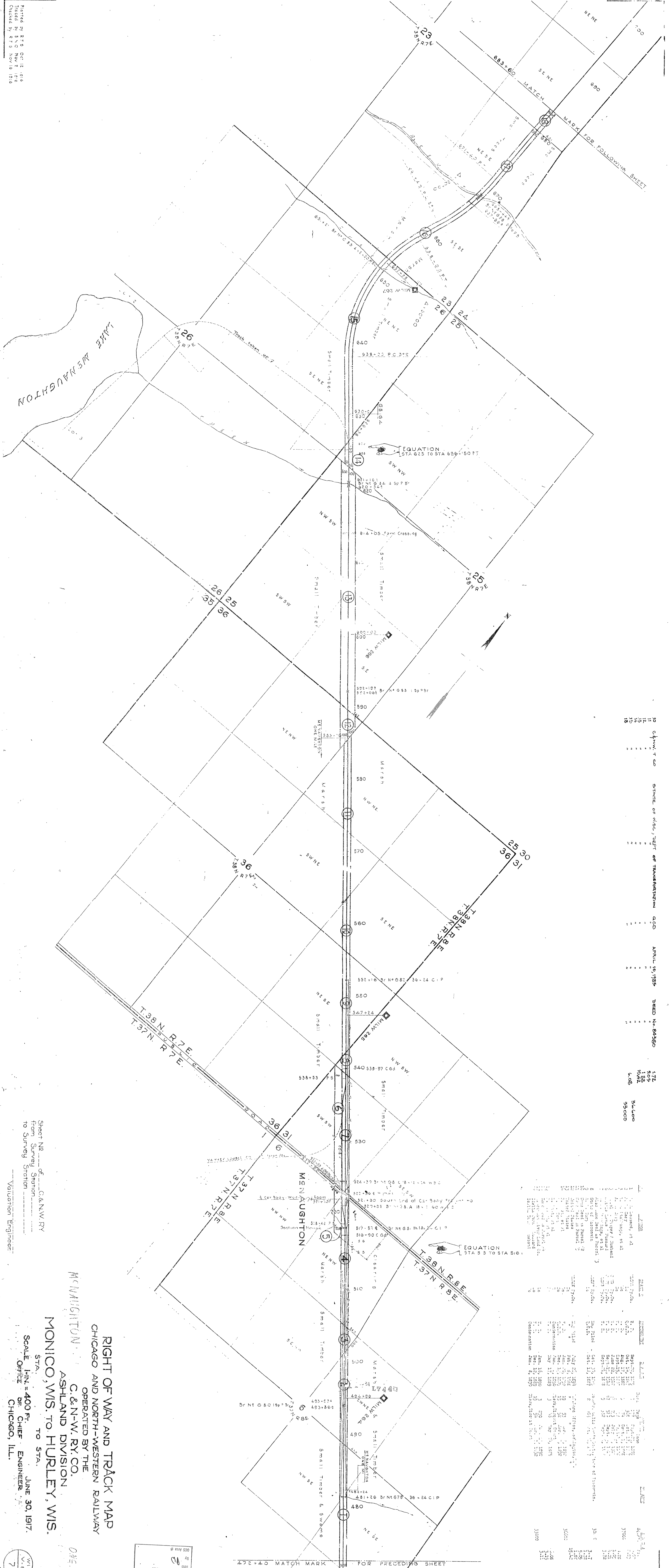


Printed by R.T.G. Oct. 12, 1916  
 Revised by R.T.G. Nov. 1, 1916  
 Checked by R.T.G. Nov. 19, 1916



Station	Area	Value
10	Ch. W. T. Co.	172
11	St. Paul & N. W. Ry.	504
12	St. Paul & N. W. Ry.	1504
13	St. Paul & N. W. Ry.	1504
14	St. Paul & N. W. Ry.	1504
15	St. Paul & N. W. Ry.	1504
16	St. Paul & N. W. Ry.	1504
17	St. Paul & N. W. Ry.	1504
18	St. Paul & N. W. Ry.	1504
19	St. Paul & N. W. Ry.	1504
20	St. Paul & N. W. Ry.	1504
21	St. Paul & N. W. Ry.	1504
22	St. Paul & N. W. Ry.	1504
23	St. Paul & N. W. Ry.	1504
24	St. Paul & N. W. Ry.	1504
25	St. Paul & N. W. Ry.	1504
26	St. Paul & N. W. Ry.	1504
27	St. Paul & N. W. Ry.	1504
28	St. Paul & N. W. Ry.	1504
29	St. Paul & N. W. Ry.	1504
30	St. Paul & N. W. Ry.	1504
31	St. Paul & N. W. Ry.	1504
32	St. Paul & N. W. Ry.	1504
33	St. Paul & N. W. Ry.	1504
34	St. Paul & N. W. Ry.	1504
35	St. Paul & N. W. Ry.	1504
36	St. Paul & N. W. Ry.	1504
37	St. Paul & N. W. Ry.	1504
38	St. Paul & N. W. Ry.	1504
39	St. Paul & N. W. Ry.	1504
40	St. Paul & N. W. Ry.	1504
41	St. Paul & N. W. Ry.	1504
42	St. Paul & N. W. Ry.	1504
43	St. Paul & N. W. Ry.	1504
44	St. Paul & N. W. Ry.	1504
45	St. Paul & N. W. Ry.	1504
46	St. Paul & N. W. Ry.	1504
47	St. Paul & N. W. Ry.	1504
48	St. Paul & N. W. Ry.	1504
49	St. Paul & N. W. Ry.	1504
50	St. Paul & N. W. Ry.	1504
51	St. Paul & N. W. Ry.	1504
52	St. Paul & N. W. Ry.	1504
53	St. Paul & N. W. Ry.	1504
54	St. Paul & N. W. Ry.	1504
55	St. Paul & N. W. Ry.	1504
56	St. Paul & N. W. Ry.	1504
57	St. Paul & N. W. Ry.	1504
58	St. Paul & N. W. Ry.	1504
59	St. Paul & N. W. Ry.	1504
60	St. Paul & N. W. Ry.	1504
61	St. Paul & N. W. Ry.	1504
62	St. Paul & N. W. Ry.	1504
63	St. Paul & N. W. Ry.	1504
64	St. Paul & N. W. Ry.	1504
65	St. Paul & N. W. Ry.	1504
66	St. Paul & N. W. Ry.	1504
67	St. Paul & N. W. Ry.	1504
68	St. Paul & N. W. Ry.	1504
69	St. Paul & N. W. Ry.	1504
70	St. Paul & N. W. Ry.	1504
71	St. Paul & N. W. Ry.	1504
72	St. Paul & N. W. Ry.	1504
73	St. Paul & N. W. Ry.	1504
74	St. Paul & N. W. Ry.	1504
75	St. Paul & N. W. Ry.	1504
76	St. Paul & N. W. Ry.	1504
77	St. Paul & N. W. Ry.	1504
78	St. Paul & N. W. Ry.	1504
79	St. Paul & N. W. Ry.	1504
80	St. Paul & N. W. Ry.	1504
81	St. Paul & N. W. Ry.	1504
82	St. Paul & N. W. Ry.	1504
83	St. Paul & N. W. Ry.	1504
84	St. Paul & N. W. Ry.	1504
85	St. Paul & N. W. Ry.	1504
86	St. Paul & N. W. Ry.	1504
87	St. Paul & N. W. Ry.	1504
88	St. Paul & N. W. Ry.	1504
89	St. Paul & N. W. Ry.	1504
90	St. Paul & N. W. Ry.	1504
91	St. Paul & N. W. Ry.	1504
92	St. Paul & N. W. Ry.	1504
93	St. Paul & N. W. Ry.	1504
94	St. Paul & N. W. Ry.	1504
95	St. Paul & N. W. Ry.	1504
96	St. Paul & N. W. Ry.	1504
97	St. Paul & N. W. Ry.	1504
98	St. Paul & N. W. Ry.	1504
99	St. Paul & N. W. Ry.	1504
100	St. Paul & N. W. Ry.	1504

Sheet No. 7 of C. & N. W. Ry.  
 from Survey Station  
 to Survey Station  
 Valuation Engineer

RIGHT OF WAY AND TRACK MAP  
 CHICAGO AND NORTH-WESTERN RAILWAY  
 OPERATED BY THE  
 C. & N.-W. RY. CO.  
 ASHLAND DIVISION  
 MONICO, WIS. TO HURLEY, WIS.

SCALE 1 IN. = 400 FT.  
 JUNE 30, 1917.  
 OFFICE OF CHIEF ENGINEER  
 CHICAGO, ILL.

Received & Ack. by  
 Valuation Engineer  
 June 30, 1917