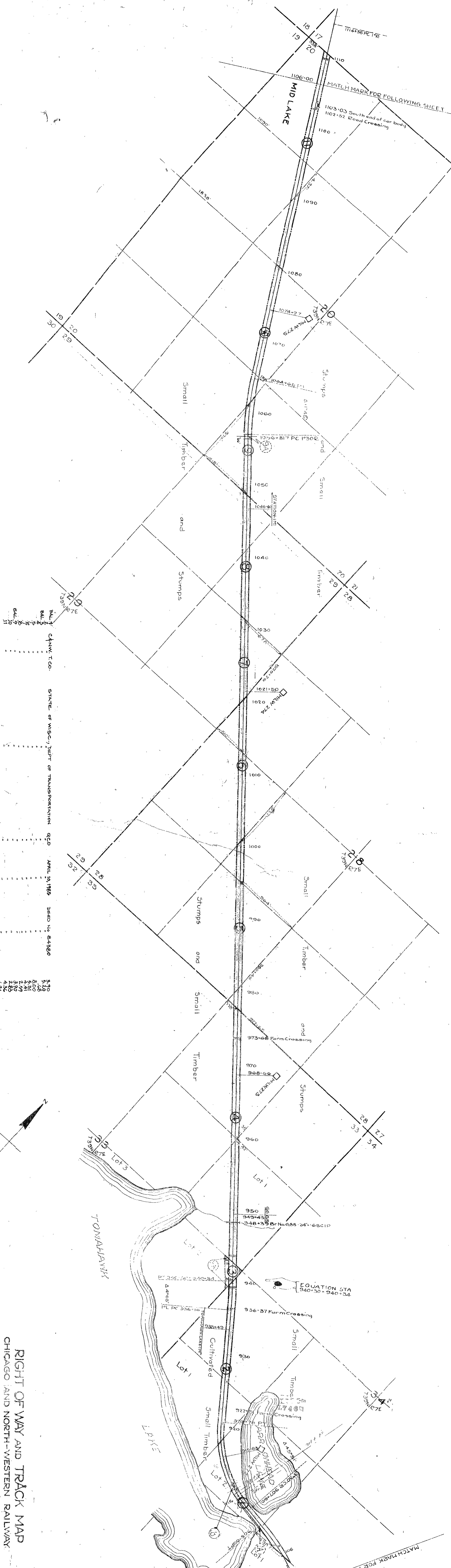


PLATTED BY 10-23-16
 TRACKED BY 11-3-16
 CHECKED BY 11-3-16



STATE OF WISCONSIN, DEPT. OF TRANSPORTATION
 G.C.D. APRIL 19, 1917
 DEED NO. 84380
 3.70
 7.48
 8.00
 4.31
 2.57
 3.70
 4.30
 4.31

CHRYSLER CO.
 STATE OF WISCONSIN, DEPT. OF TRANSPORTATION
 G.C.D. APRIL 19, 1917
 DEED NO. 84380

3.70
 7.48
 8.00
 4.31
 2.57
 3.70
 4.30
 4.31

SHEET NO. 5 OF C. & N.W. RY.
 FROM SURVEY STATION
 TO SURVEY STATION
 VALUATION ENGINEER

CHICAGO, ILL.

NO.	DATE	DESCRIPTION	AMOUNT	REMARKS
1	1917
2	1917
3	1917
4	1917
5	1917
6	1917
7	1917
8	1917
9	1917
10	1917
11	1917
12	1917
13	1917
14	1917
15	1917
16	1917
17	1917
18	1917
19	1917
20	1917
21	1917
22	1917
23	1917
24	1917
25	1917
26	1917
27	1917
28	1917
29	1917
30	1917
31	1917
32	1917
33	1917
34	1917
35	1917
36	1917
37	1917
38	1917
39	1917
40	1917
41	1917
42	1917
43	1917
44	1917
45	1917
46	1917
47	1917
48	1917
49	1917
50	1917
51	1917
52	1917
53	1917
54	1917
55	1917
56	1917
57	1917
58	1917
59	1917
60	1917
61	1917
62	1917
63	1917
64	1917
65	1917
66	1917
67	1917
68	1917
69	1917
70	1917
71	1917
72	1917
73	1917
74	1917
75	1917
76	1917
77	1917
78	1917
79	1917
80	1917
81	1917
82	1917
83	1917
84	1917
85	1917
86	1917
87	1917
88	1917
89	1917
90	1917
91	1917
92	1917
93	1917
94	1917
95	1917
96	1917
97	1917
98	1917
99	1917
100	1917

RIGHT OF WAY AND TRACK MAP
 CHICAGO AND NORTH-WESTERN RAILWAY
 OPERATED BY THE
 C. & N.W. RY. CO.
 ASHLAND DIVISION
 MONICO WIS. TO HURLEY WIS.
 STA. TO STA.
 SCALE 1-IN. = 400 FT.
 JUNE 30, 1917
 CHIEF ENGINEER
 CHICAGO, ILL.

CHICAGO, ILL.