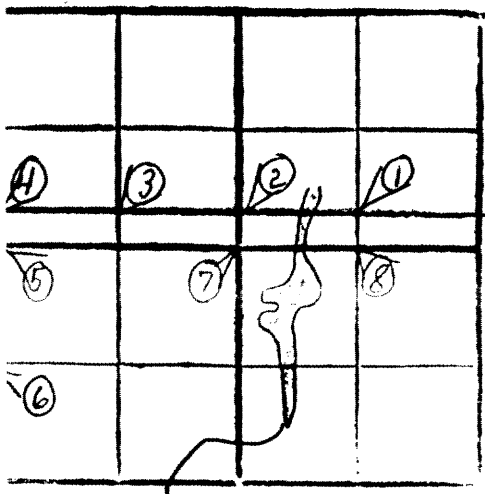


SEC. 1, T. 39 N., R. 7 W.

① N¹/₄ NE¹/₄ at 20.101 set 3/4" iron pipe in swamp for 1/8 cor. Pine (alt.) 12" - N17°E - 0.762 ch. Tom. 2 1/2" - S 29°W - 0.310 ch. (Copp & Bruner 11/16/60)
1980 found



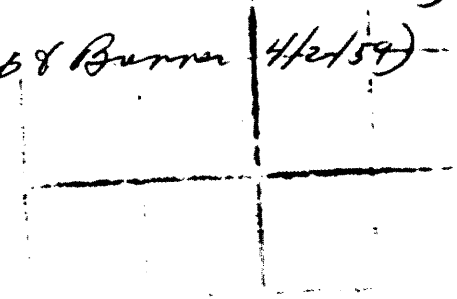
② N¹/₄ Sec 1 at 42.66 north of S¹/₄ Cor. fell 22 west of 1/4 Cor., found original tree a slab 12' high that is down & nearly burnt up. (Vaughn 12/27/1900) also 20.33 ~~west~~^{east} of NW Cor. (Vaughn 11/16/01) at 40.236 east of NW Cor. & 40.203 east of NE Cor. found remains of both O.B.T. by post only & post hole. Checked this corner out by running north Vaughn's distance (3.85) from his ctr. of sec. 1. Set new pipe. New B.T. PN 9" - S 79°W - 0.468 ch.; PW 7" - S 89°E - 0.210 ch. (Copp & Bruner 4/12/59) see corner file

17514

RECEIVED & FILED #17514
Oneida County Surveyor's Office
Date 8801 22 NFA
By [Signature]
OCS Area #

③ N¹/₄ NW¹/₄ at 20.165 set 1/8 cor. PN 8" - N 24°E - 17; BW 8" - S 10°W - 25 (Vaughn 11/16/01) at 20.118 set 1/2" pipe for 1/8 cor. No origin of Vaughn's corner. New B.T. PW 12" - N 26°W - 0.325 ch. (Copp & Bruner 4/12/59) computed location is 3.45' east (I have 10' diff in total length)
Seymour 12-11-80

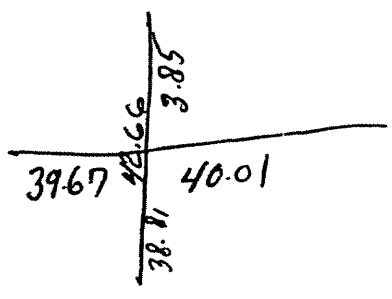
④ NW Cor. Sec 1 at 3.72 north of W 1/4 cor. fell. 75 east of cor. see new post from orig. trees (Vaughn 11/16/01) Ground part of all 4 o.BT. & post hole set w.c.d. pipe. New BT. PW 13" - N23°W - 0.237 ch.; PW 6" - N53°E - 0.130 ch.; PN 12" - S28°E - 0.510 ch.; PW 8" - S7°W - 0.180 (Copp & Burren 4/2/59) - see corner file



⑤ W 1/4 Sec 1 Both orig trees are dead stbs. (Vaughn 12/27/1900) at 40.65 north of SW cor of 3.72 south of NW cor. New BT. PW 30" (dead) - N51°E - 1.82 (Vaughn 12/27/1900) at 39.850 north of sub cor of 4.234 south of NW cor. set w.c.d. pipe for new 1/4 cor. MS 6" - S5°E - 0.48 ch.; PW 12" - N55°W - 0.92 ch.; PN 8" - N52°E - 0.49 ch. (Bennett 1/4/61) see corner file

⑥ W 1/4 SW 1/4 at 19.925 1/2 set 1/8 cor. aspen 6" - N70°W - 0.33 ch.; PW (stb.) 30" - S38°W - 1.050 ch.; PW 12" - N39°W - 1.520 ch. (Bennett 1/4/61) Reset 1.95' (sw) BT's now PW 22" N24°W 99.98'; Asp 14" N65°W 21.5'; old stbd 530°W 67.4' Seymour, 6-1-84

⑦ Cor. Sec 1 PW 30" - N84°E - 71; PN 10" - N47°W - 58 (Vaughn 12/27/1900) Ground both of Vaughns BT, PW 30" down, the other a stb set w.c.d. pipe. New BT. PN 22" - N47°E - 1.020 ch.; PN 12" - N6°W - 0.565 ch. (Bennett 8/23/61)



⑧ N¹/₄ SE¹/₄ Term. 9" - N 54° E - 0.295 ch.;
PW 12" - N 44° W - 13. (Vaughn 12/27/1900)

1-39-7

L7514

RECEIVED & FILED #.....
Ontario County Surveyor's Office
Date... APR. 22 1982.....
By: S. J. [Signature].....
OCS Area #.....