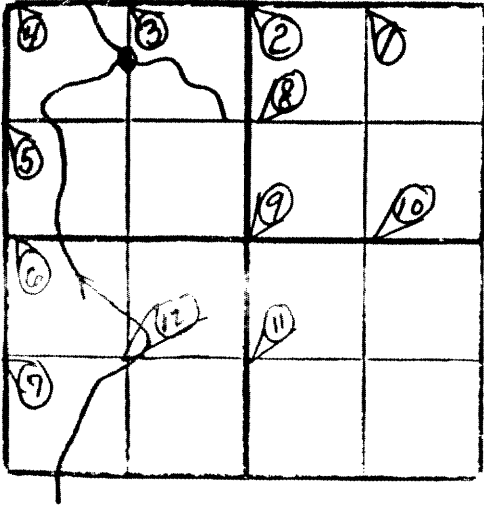


SEC. 7 T. 38 N. R. 9 E W.

① N¹/₄ NE¹/₄



② N¹/₄ Sec 7

③ N¹/₄ NW¹/₄

RECEIVED & FILED **L789**
 Onitida County, Surveyor's Office
 Date: **APR 22 1988**
 By: *[Signature]*
 OCS Area #:

L789

④ NW Cor. Sec 7 set W.C.D. ~~post~~ in marsh. $\text{Stem. } 4'' - \text{S } 03^\circ \text{W} - 2.775 \text{ ch.}$; $\text{Stem. } 3'' - \text{S } 34^\circ \text{E} - 0.959 \text{ ch.}$ (Dg 64)

⑤ W $\frac{1}{4}$ NW $\frac{1}{4}$ at 20.000 $\frac{1}{2}$ set 1" I.P. on "Moses Rock". The highest granite lies 3 $\frac{1}{2}$ chain Wly of $\frac{1}{8}$ cor. $\text{PN } 9'' - \text{N } 82^\circ \text{W} - 0.330 \text{ ch.}$; $\text{PN } 8'' - \text{S } 06^\circ \text{E} - 0.231 \text{ ch.}$ (Dg 64)

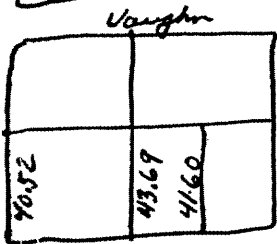
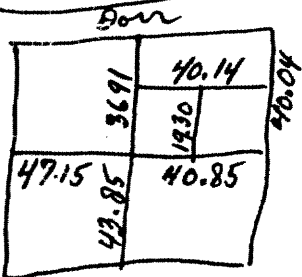
⑥ W $\frac{1}{4}$ Sec 7 at 40.52 north of original SW corner fell 84 east of $\frac{1}{4}$ orig. $\frac{1}{4}$ corner (Vaughn 10/31/02) at 40.001 each way set W.C.D. ~~post~~ in Stem. swamp 3 $\frac{1}{2}$ chain south to edge of swamp. $\text{Stem. } 10'' - \text{S } 41^\circ \text{W} - 0.758 \text{ ch.}$; $\text{Stem. } 9'' - \text{S } 49^\circ \text{E} - 0.703 \text{ ch.}$ (Dg 64)

⑦ W $\frac{1}{4}$ SW $\frac{1}{4}$ at 20.26 set $\frac{1}{8}$ ~~post~~ Cedar 12'' - $\text{N } 59^\circ \text{W} - 0.195 \text{ ch.}$; $\text{Stem } 9'' - \text{S } 31^\circ \text{E} - 0.182 \text{ ch.}$ (Vaughn 10/31/02) at 20.000 $\frac{1}{2}$ 1" I.P. $\text{BW } 6'' - \text{N } 46^\circ \text{W} - 0.301 \text{ ch.}$; $\text{BW } 5'' - \text{S } 20^\circ \text{W} - 0.242 \text{ ch.}$ (Dg 64)

⑧ W¹/₄ NE¹/₄ Marked stake in open swamp. (Don 1/20/94)

⑨ Plt. Sec 7

Set Center of sect. Cedar 12" - N 62° W - 0.115 ch.; Birch, 12
N 59° E - 19 (Don 1/20/94)



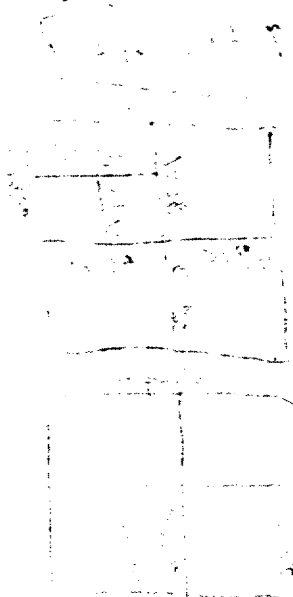
⑩ N¹/₄ SE¹/₄ Birch 10" - S 75° E - 0.185 ch. (Don 1/20/94)

RECEIVED & FILED # 07-03-94
Osceola County Surveyor's Office
Date: APR 22 1988
By: S/T
OCS Area #

Don

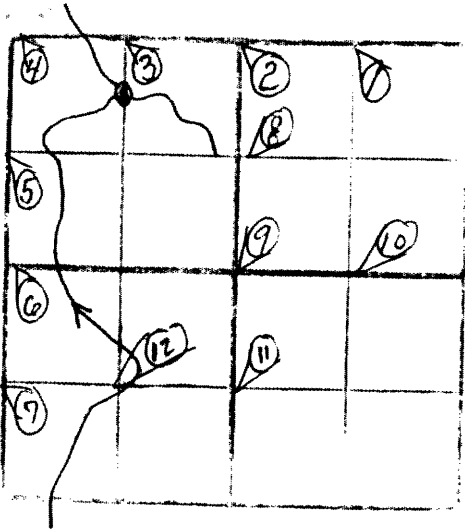
⑪ W¹/₄ SE¹/₄ at 43.69 north of S¹/₄ post full 42 west of ctr. set
by Don. Set 18 post at 26.84 Thom 10" (dead) N5°W-47; Thom. 8" (dead)
S59°W-30 (Vaughn 10/31/02)

⑫ ctr. SW¹/₄ Run east from S¹/₈ west line & set temp. ¹/₁₆ at proportioned
distance. (Vaughn 10/31/02)



SEC. 7 T. 38 N. R. 9 W.

① N¹/₄ NE¹/₄



② N¹/₄ Sec 7

G. Mentz book (w. wood hasit) says a BT Tam 6" S20°E 53 lks.

③ N¹/₄ NW¹/₄

④ NW Cor. Sec 7 set W.C.D. pipe in marsh. Tam. 4" - $S 03^{\circ} W - 0.775$ ch.; Tam. 3" - $S 34^{\circ} E - 0.959$ ch. (Dg 64)

⑤ W $\frac{1}{4}$ NW $\frac{1}{4}$ at 20.000 $\frac{1}{2}$ set 1" I.P. on "Moses Rock". The highest granite lies $3\frac{1}{2}$ chain wly of $\frac{1}{8}$ cor. PN 9" - $N 82^{\circ} W - 0.330$ ch.; PN 8" - $S 06^{\circ} E - 0.231$ ch. (Dg 64)

⑥ W $\frac{1}{4}$ Sec 7 at 40.52 north of original SW corner fell 84 east of NW $\frac{1}{4}$ corner (Vaughn 10/31/02) at 40.001 each way set W.C.D. pipe in Tom. swamp $3\frac{1}{2}$ chain south to edge of swamp. Tam. 10" - $S 41^{\circ} W - 0.758$ ch.; Tam. 9" - $S 49^{\circ} E - 0.703$ ch. (Dg 64)

⑦ W $\frac{1}{4}$ SW $\frac{1}{4}$ at 20.26 set 18 post Cedar 12" - $N 50^{\circ} W - 0.195$ ch.; Tam 9" $S 31^{\circ} E - 0.182$ ch. (Vaughn 10/31/02) at 20.000 $\frac{1}{2}$ 1" I.P. BW 6" - $N 40^{\circ} W - 0.301$ ch.; BW 5" - $S 20^{\circ} W - 0.242$ ch. (Dg 64)

Dec. 36, 37-7

E/W 1/4 line ; WCD b.c. west side of River (A. No. 100)
 prob. used in 5' ch x 5' ch parcel west
 of Hwy "D".
 WCD reported out of ground, I charted and
 found it lying down but some out of ground
 (may 3 to 4 inches), but is about 10' from
 BT distance across location. Rechecked to
 1/2 mi^s W of Rd and found BT are dist. location
 fit good so I placed WCD 2" b.c. there
 and made more BTs

Ash 12" N30°W 52.08'
 Ch 8" S85°W 31.48' Seymour 11/88