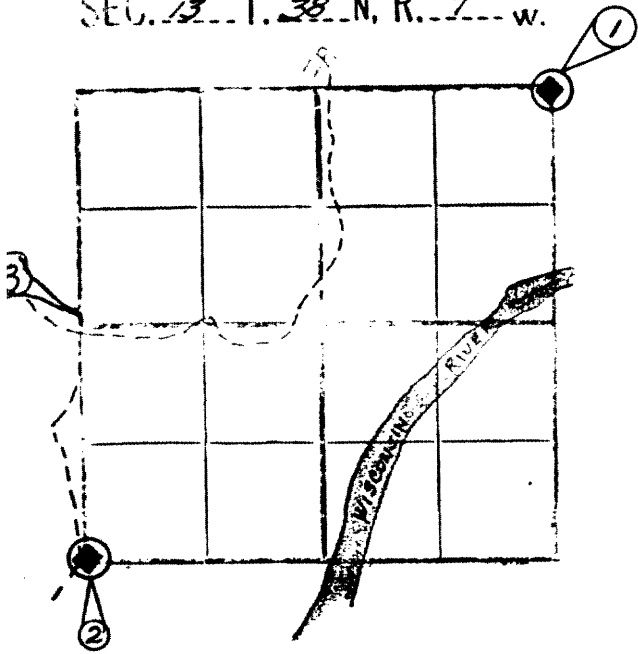


SEC. 13 T. 38 N. R. 7 W.



① NORTH EAST CORNER OF SECTION 13, T38N, R7E, MARKED BY A SQUARED POST. BT'S M.N 6"  $349^{\circ}N 112'$ ,  $07'' N 33^{\circ}W 34.2'$ , Orig. Stp.  $N 27^{\circ}W 67.0'$ .

② Southwest Corner of section 13, T38N, R7E, marked by a concrete post (Hall), BT's, P.W.  $14'' N 51^{\circ}E 28.6'$ , P.W.  $22'' N 75^{\circ}E 13.9'$ , O.S.  $12'' S 23^{\circ}W 19.1'$  (Original Stp ?)

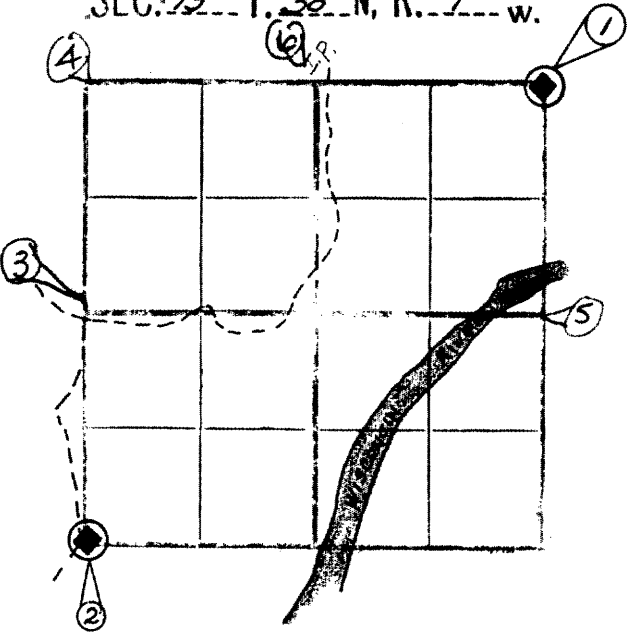
③  $W^{1/4}$  Sec 13 P.W. 4" w/2 blazes some scribing, this was done recently; A 6" w/3 blazes, hole in ground between them.

2" I.P. w/4" sq cedar post (WPS 1979)

RECEIVED & FILED 48054  
Oncida County Surveyor's Office  
Date: APR 22 1979  
By: [Signature]  
OCS Area #:

10805

SEC. 13 T. 38 N. R. 7 E. W.



① NORTH EAST CORNER OF SECTION 13, T38N, R7E, MARKED BY A SQUARED POST. BT'S M.N. 6" 549°W 11.2', O 7" N 33°W 34.2', Orig. Stp. N 27°W 67.0'.  
See sheet 38-8 Sec 18

② Southwest Corner of section 13, T38N, R7E, MARKED BY A CONCRETE POST (Hall), BT's, P.W. 14" N 51°E, 28.6', P.W. 22" N 75°E 13.9', P.S. 12" S 23°W, 19.1' (Original stp?)

③ W 1/4 Sec 13 P.W. 4" w/2 blazes some scribing, this was done recently; A 6" w/3 blazes, hole in ground between them.

2" I.P. w/4" sq cedar post (WPS 1979)

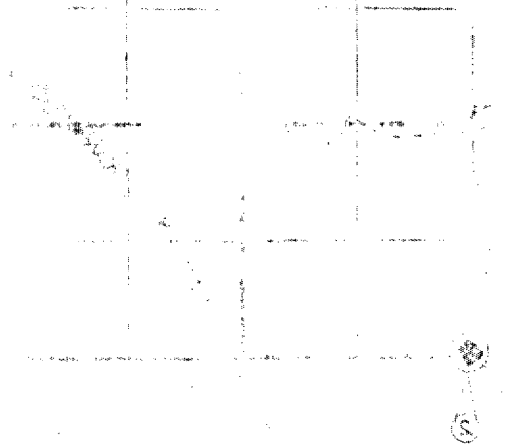
Found 12-8-82 Seymour 2" i.p. BT<sup>s</sup> Asp 10" S 44°E 2.35'  
PW 10" N 88°W 11.65'

④ NW 13 found 1" i.p. and sq. post BT<sup>s</sup> PN 18" N 79°E 22.1 lks  
12-8-82 Seymour PN 18" stp (cut) N 60°W 15.8 lks

⑤ E 1/4 13 found 1" i.p. (matches old records) Made BT<sup>s</sup> PN 16" S 64°W 24.40', PJ 10" S 54°E 86.60'  
12/82 Seymour nail in OR 12" N 20°W 41.10', SE cor cabin N 63°W 72.30'

⑥ N<sup>1</sup>/<sub>4</sub> 13

found 1" i.p. + BT OR 10" N 69° E 5.1' (ctr) also found sqrd. wood post leaning on BT. Made new BT<sup>s</sup> OR 18" S 89° W 42.70', turn OR 15" S 21° E 14.40', OR 12" N 30° W 20.50'; corner is about 30' W of woods road. I.P. is according to W. Woods records. Has not been verified as to distance from other corners. (Seymour 11/21/88)



... .. ⑤

... .. ⑥

... .. ⑦

... .. ⑧