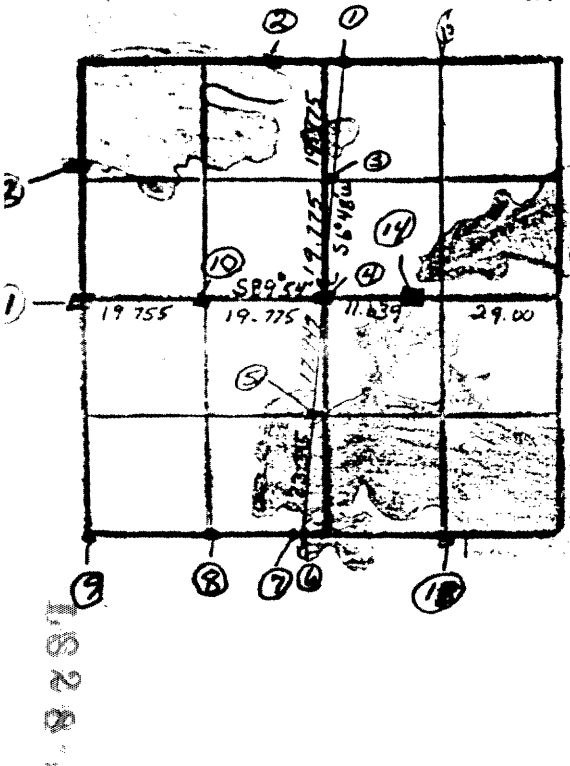


SEC. 16 T. 38 N. R. 7 W.



① N¹/₄. B.C. AT 40 chains. Old wood post.
 B.T.'s - Pn 11" N68E 30; Pn 12" S5E 20. (Hall 1929)
 G.L.O. Brass Cap found in place. B.T. P.R. 16" South 20.7'
 P.R. 14" N64°E 38.4', (John Fisher, 1979)

② MC 52.55 chains. B.T. Pn 9" N10E 45. (Hall 1929)

③ W¹/₄ NE¹/₄. I.P. B.T.'s - Pn 20" N27W 58
 Pn 18" S62E 56.2E 41. (Hall 1929)

RECEIVED & FILED #	18287
On file County Surveyor's Office	
Date	APR. 22 1988
By	S. J. /
OCS Area #	

④ Center 1/4

⑤ W¹/₄ SE¹/₄ MC. 17.947 ch. set B.C. B.T.'s Pw 12" N81W 33 1/2
 Or 10" N29E 36. (Hall 1929)

⑥ S¹/₄ in water. 2.048 ch. east of m.c. B.T.'s Pn 10" S34E 141;
 Or 6" N27W 73.8. (Hall 1929)

⑦ MC 2.048 chains west of S¹/₄. GLO B.C.
 B.T.'s - Pn 6" S76W 73; Pn N67W 43. (Hall 1929)

- ⑧ SW 1/4. W.P. B.T.'s 08 8" S40E 19 1/2; 08 10" N71W 13. (Hall 1929)
- ⑨ SW corner. GLO B.C. B.T.'s - A 8" N29E 36; Pw 7" S46E 58; A 9" S11 1/2 W 41; Pw 6" N16 1/4 W 15. (Hall 1929)
- ⑩ N 1/4 SW 1/4. I.P. 19.775 ch. west of center. B.T.'s - Pw 8" N49E 33 1/2; or 13 N69W 33 1/2; or 8" N87W 4. (Hall 1929)
- ⑪ W 1/4 B.C. B.T.'s - Or 4" N25W 18; Pw 18" N70E 6. (Hall 1929)
- ⑫ mc. No bearing trees.
- ⑬ SE 1/4. B.T.'s 08 12" S45E 34.3; 08 6" N76E 12.5. (Hall 1929)
- ⑭ AT 11.639 ch. E of center Set mc. B.C. B.T.'s - A 10" S64W 21; Ms 4" N21E 28. (Hall 1929)

16-38-7

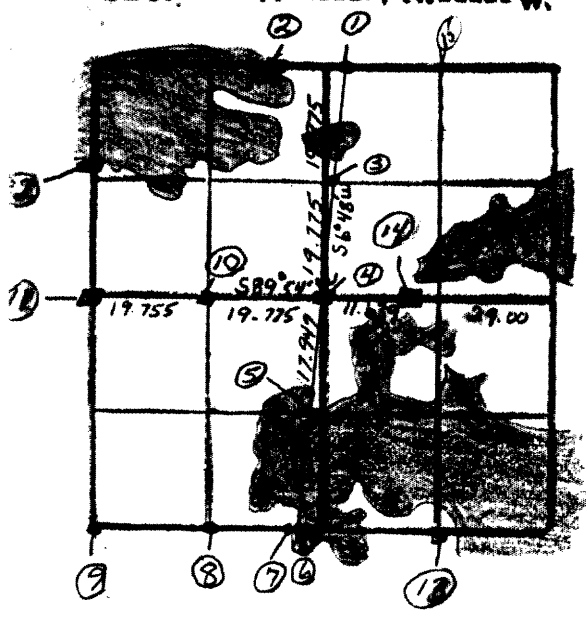
(15) 3rd I.P. found in place, BT^s pine stp. N 16° E 16.3' (John Fisher, 1979.)

PW 16" N 25° W 69.20', OR 11" S 85° W 50.40' (Vissers, Wood, Freura, 79)

KS 28

RECEIVED & FILED
April 22 1980
Ocala County Surveyor's Office
Date APR 22 1980
By [Signature]
OCS Area #

SEC. 16 T. 38 N. R. 7 W.



① N¹/₄. B.C. AT 40 chains. Old wood post.
 B.T.'s - Pn 11" N68E 30; Pn 12" S5E 20. (Hall 1929)
 G.L.O. Brass Cap found in place, B.T. P.R. 16" South 20.7'
 P.R. 14" N64°E 28.4', (John Fisher, 1979)

② MC 52.55 chains. B.T. Pn 9" N10E 45. (Hall 1929)

③ W¹/₄NE¹/₄. I.P. B.T.'s - Pn 20" N27W 58
 Pn 18" S62E 56.2E 41. (Hall 1929)

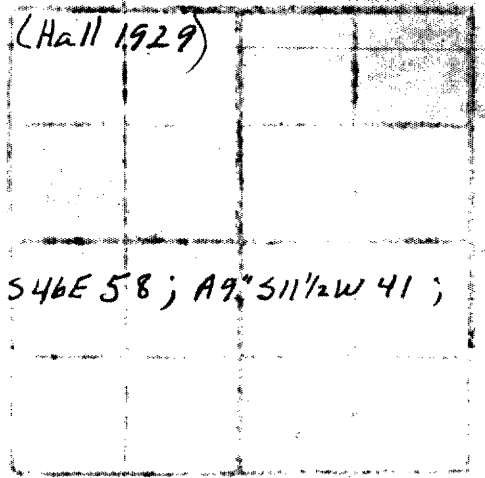
④ Center 1/4

⑤ W¹/₄SE¹/₄ MC. 17.949 ch. set B.C. B.T.'s Pw 12" N81W 33½
 Or 10" N29E 36. (Hall 1929)

⑥ S¹/₄ in water. 2.048 ch. east of M.C. B.T.'s Pn 10" S34E 141;
 OB 6" N27W 73.8 - (Hall 1929)

⑦ MC 2.048 chains west of S¹/₄. G.L.O. B.C.
 B.T.'s - Pn 6" S76W 73; Pn N67W 43. (Hall 1929)

8) SW 1/4. W.P. B.T.'s Ob 8" S40E 19 1/2; Ob 10" N71W 13. (Hall 1929)



9) SW corner. GLO B.C. B.T.'s - A 8" N29E 36; Pw 7" S46E 58; A 9" S11 1/2 W 41; Pn 6" N16 1/4 W 15. (Hall 1929)

10) N 1/4 SW 1/4. I.P. 19.775 ch. west of center. B.T.'s - Pw 8" N49E 33 1/2; Or 13 N69W 33 1/2; Or 8" N87W 4. (Hall 1929)

11) W 1/4 B.C. B.T.'s - Or 4" N25W 18; Pw 18" N70E 6. (Hall 1929)

12) M.C. ~~No bearing trees~~. WCD brass cap Or 9" S19E 40.0'; Mpl 7" N53W 9.7'

13) SE 1/4. B.T.'s Ob 12" S45E 34.3; Ob 6" N76E 12.5. (Hall 1929)

14) AT 11.639 ch. E of center Set M.C. B.C. B.T.'s - A 10" S64W 21; Ms 4" N21E 28. (Hall 1929)

15) SW 1/4. B.T.'s - A 10" S64W 21; Ms 4" N21E 28. (Hall 1929)

(15) 3" I.P. found in place, BT^s pine stp. N 16° E 16.3' (John Fisher, 1979.)

FW 16" N 25° W 69.20', OR 11" S 85° W 50.40' (Vissers, Wood, Freund, 79)