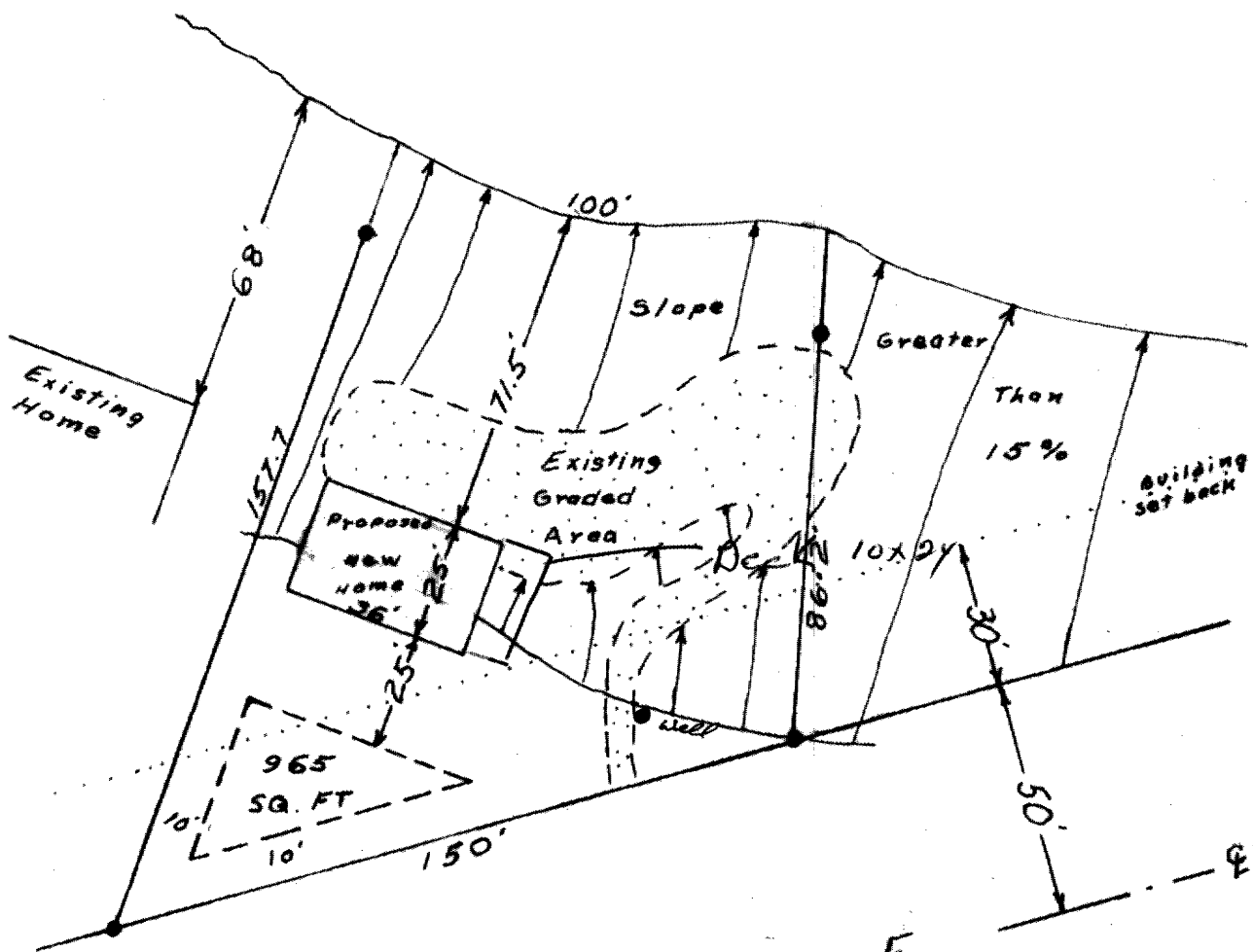


L840

L840

GILMORE LAKE



STATE FOREST ROAD E

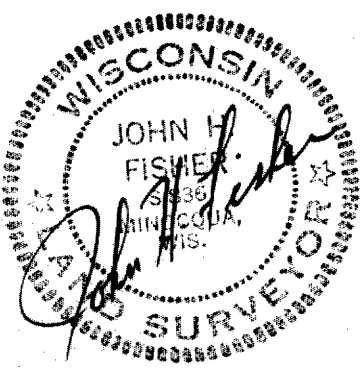
House 25' x 36'
Including overhang
2 Bedrooms

Part of
GOV'T LOT 5
SECTION 24,
T39N, R7E

WOODRUFF TOWNSHIP
ONEIDA COUNTY
WISCONSIN

LOT 5

Scale 1" = 4'



By: *John H. Fisher*

Date: JUL 08 1988

OCS Area #.....

Oneida County Surveyor's Office

L840