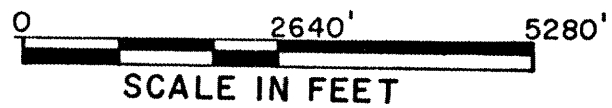
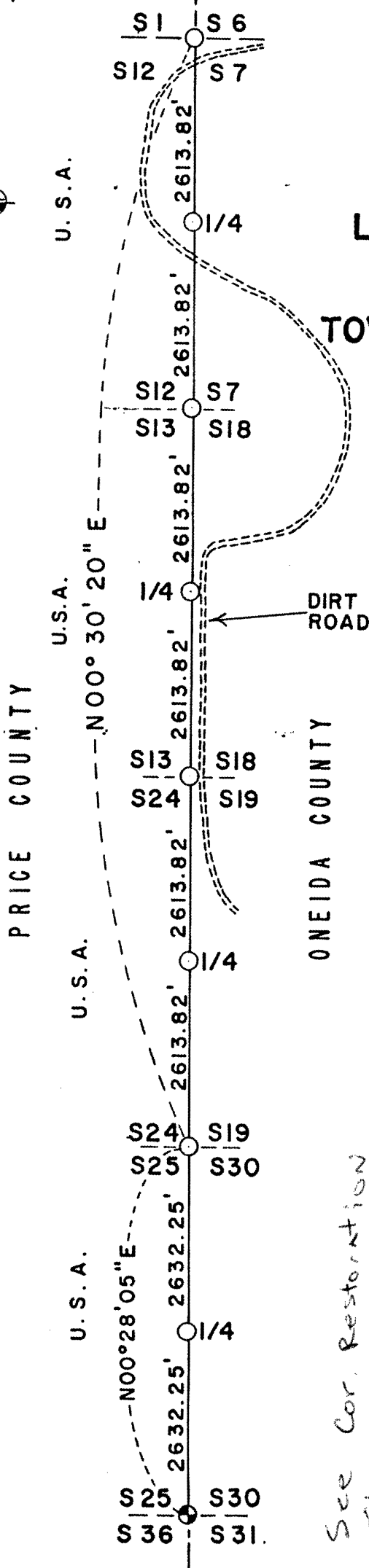


RECEIVED & FILED #8.6.77
 PRICE COUNTY OFFICE
 FEB 2 1999
 M. J. C.

T 37 N.
 R. 3 E. R. 4 E.

**PLAT OF SURVEY,
 U.S. GOVERNMENT LAND
 LINE AND CORNERS COMMON TO SECTIONS
 7-12, 13-18, 19-24, and 25-30,
 TOWNSHIP 37 NORTH, RANGE 3 and 4 EAST,
 FOURTH PRINCIPAL MERIDIAN,
 PRICE and ONEIDA COUNTY,
 WISCONSIN**



LEGEND

- Corner position marked by a 2 inch inside diameter, 5 foot long, concrete filled, galvanized iron pipe capped with a 3 inch diameter brass tablet stamped to identify corner.
- ⊙ Corner position marked by a 6 inch by 6 inch square concrete monument set in 1912 by Robert Jakoubek, Deputy County Surveyor, Price County.

U.S.A.- U.S. Government land.

*See Cor. Restoration
 Sheets For Full
 COPY*

*See G-1 For
 (37-4)
 P. 2-3*

*Filed for record 7-21-1975
 in Certified Land Corner Rest.
 Bk. Vol 1, Document No. 200155*

1.8674