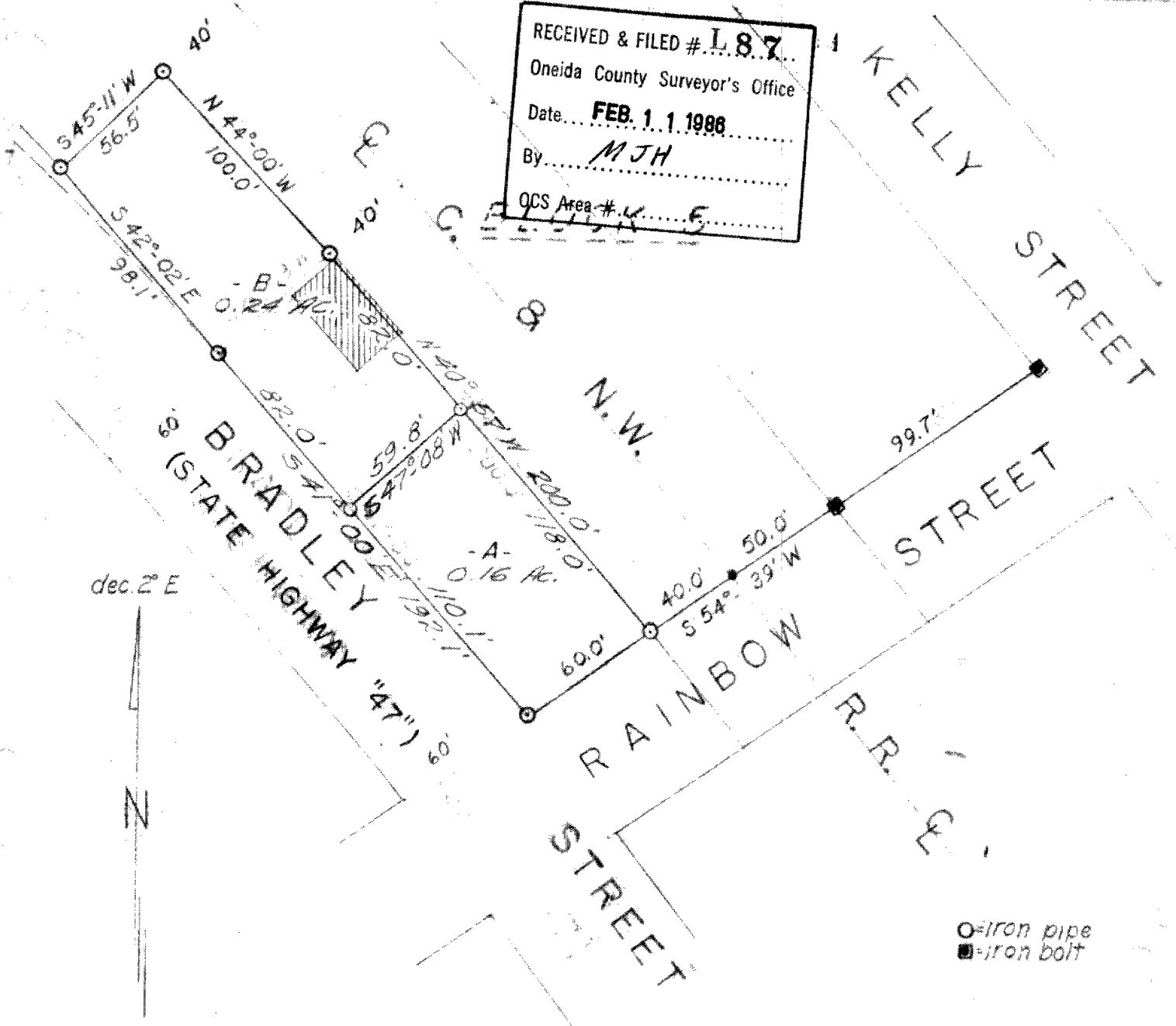


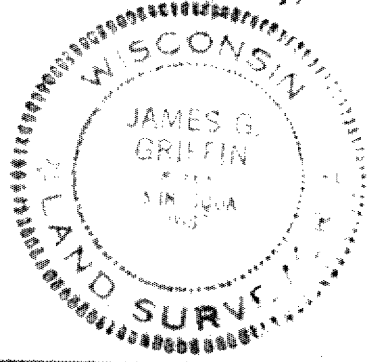
RECEIVED & FILED # **L 87**  
 Oneida County Surveyor's Office  
 Date... **FEB. 1 1 1988**  
 By... **MJH**  
 QCS Area #... **5**



Part of  
**ORIGINAL PLAT OF TOMAHAWK LAKE**  
 NE 1/4 of the NE 1/4 and the SE 1/4 of the NE 1/4  
**SECTION 3, T 38 N, R 7 E**

Oneida County, Wis.

Scale 1" = 60'  
 September, 1962  
 Revised:  
 April, 1971



Northwoods Surveyors  
*James G. Griffin*  
 LAND SURVEYOR