

64 SURVEY of Road for Town of Little Rice

Begin at cor to 29 30. 31 32. 36. 5 E  
Set post from Hem BT all gone but stump  
marks plain Birch is gone. Run N var 7.36 S  
466. fell 9.24 1/2 west of 1/4 P Cedar ok.  
Birch is nearly gone. Set post and  
made new bearing. Cedar 16 S 60 W 48  
Am going to run this line again

North from 1/4 P bet 29+30 var 510 E  
4000 could not find corner still north  
6834 offset west at R angle 990 to  
see line 1175 S of 1/4 P. am so far off  
I went to 1/4 P bet 19+20 for sugar ok  
Birch which stood SW other gone did not  
set post as a very large Hem lies where  
post should stand. cut a notch where post  
should be and made new bearing  
Birch 24 N 86 1/2 W 31 1/2  
no other

Run N var 240 E  
1500 took distance to old line  
2000 " " " " "  
2500 " " " " "  
3000 " " " " "  
3400 " " " " " and figured  
my average departure ~~3991~~ and at  
3991 set post on E+W see line  
W Pine stump 16 N 21 E 32  
no other near

Corrected line to 1/4 post and run south  
on corrected line var 430 E  
1000 enter swamp  
3750 leave "  
4038 fell 67 W of cor found post and other  
indications of cor earthing is down  
and badly burned nothing for bearings  
corrected line N to 1/4 P.  
copied on page 4 county record

SURVEY of Road for Little Rice cont

JULY 26 1912  
began again at 1/4 P bet 29+30  
Run N var 20 15 E  
700 leave high swamp  
4140 fell 15 W of cor to 19+20 2930  
corrected line south to 1/4 P

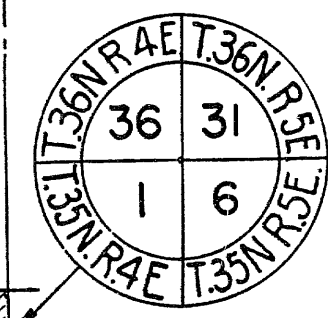
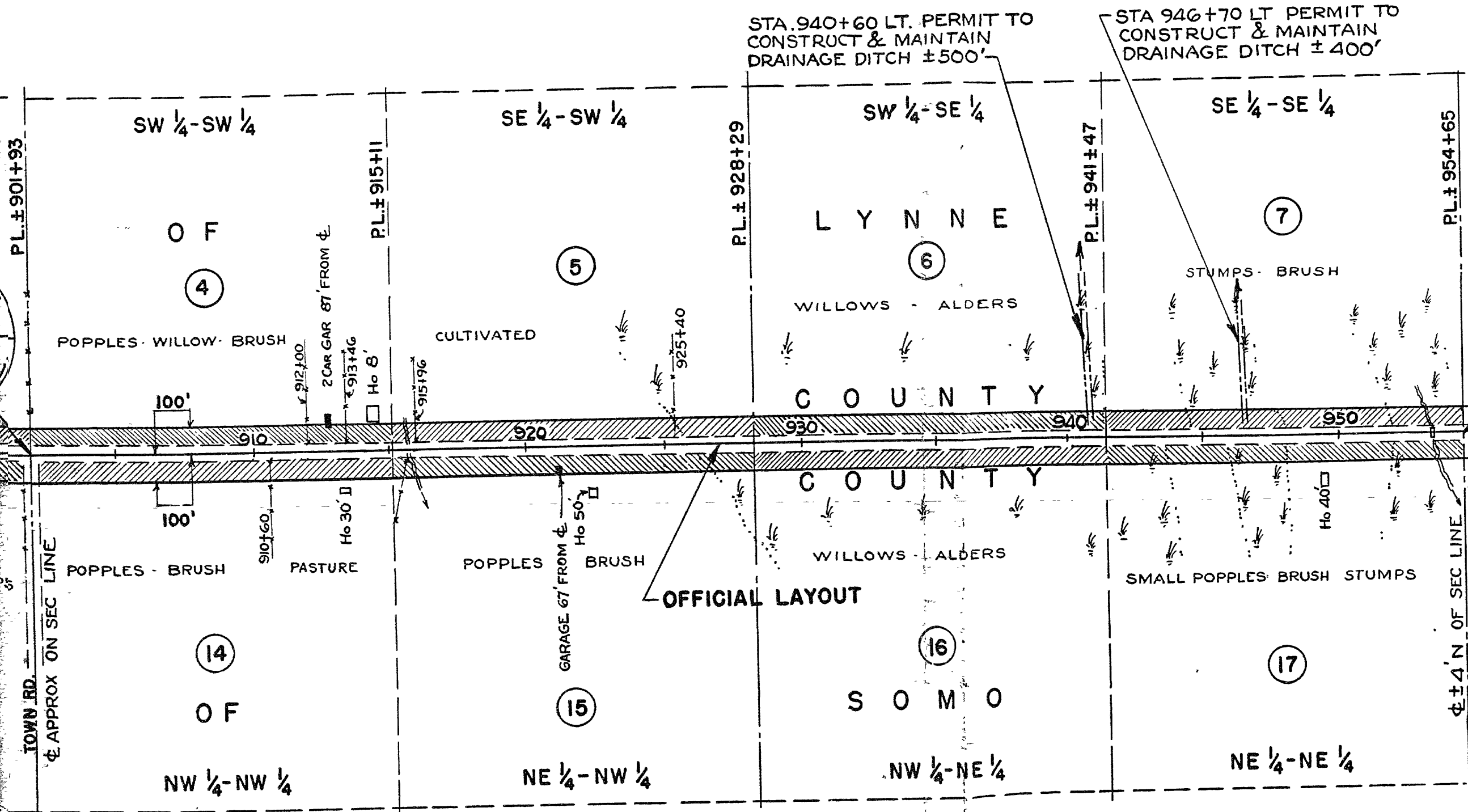
Commenced again at cor to 29.30 31 32  
Run N var 8.50 W  
1500 enter wet springy ground  
4167 fell 41 3/4 East of 1/4 P  
Corrected line south to corner  
Placed a piece of R.R rail 3 1/2 feet  
long at this corner for post  
Corrected var north from this corner  
is 8.10 W  
finished in A.M.  
am going home this P.M.

copied on page 4 county record

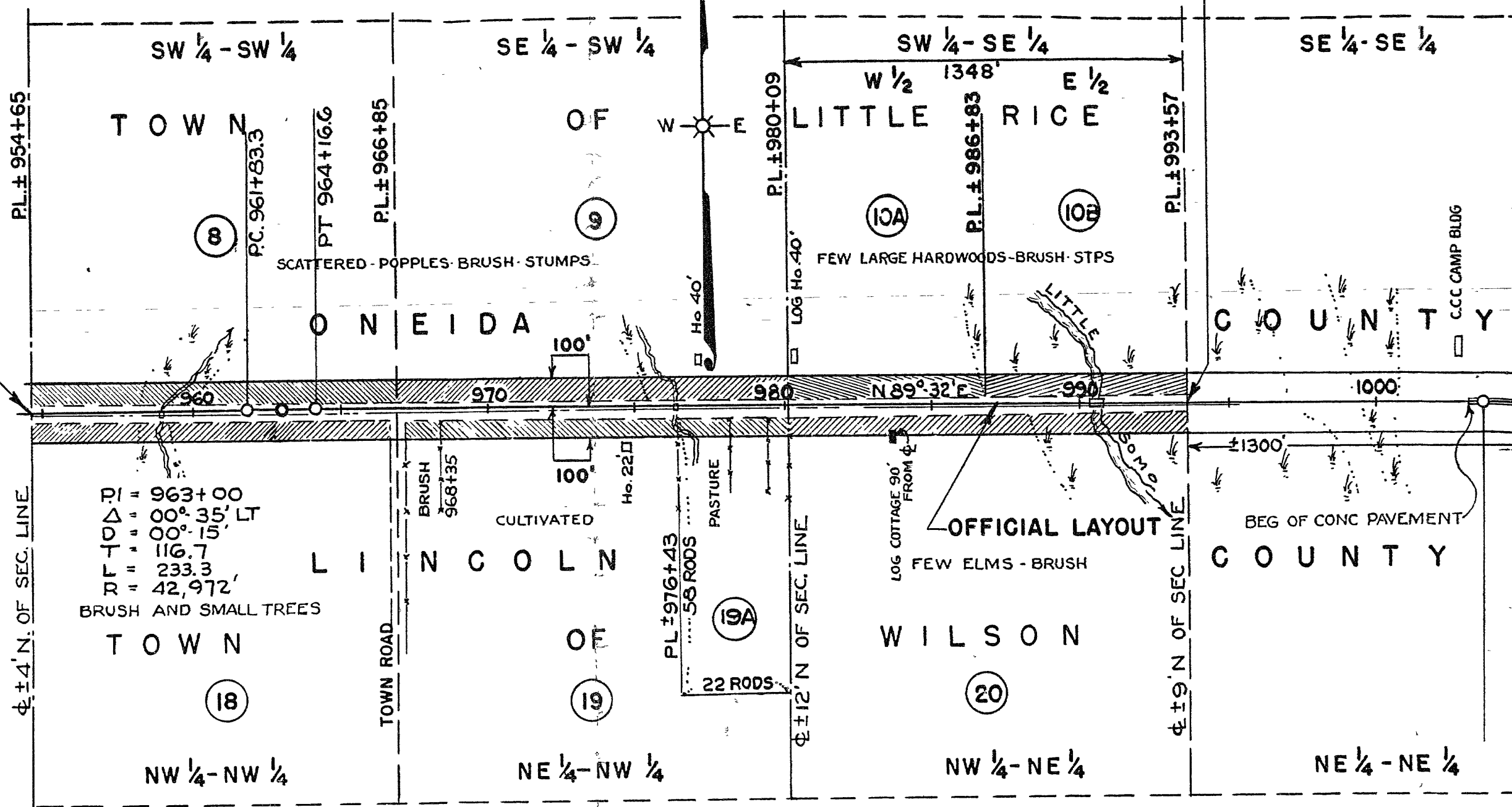
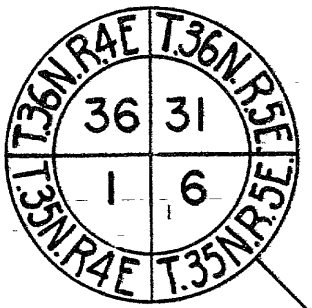
RECEIVED & FILED # 78  
County Surveyor's Office  
MAY 26 1909  
map  
OCS Area #

FED ROAD DIST NO	STATE	FED AID PROJ NO	SHEET NO	TOTAL SHEETS
4	WIS	335A(2)	4	

DIVISION JOB NO 7218



OFFICIAL LAYOUT



PI = 963+00  
 Δ = 00° 35' LT  
 D = 00° 15'  
 T = 116.7  
 L = 233.3  
 R = 42,972'  
 BRUSH AND SMALL TREES

OFFICIAL LAYOUT

*Handwritten notes:*  
 Section 10A  
 Section 10B  
 Section 19A  
 Section 20  
 Section 18  
 Section 19  
 Section 8  
 Section 9