

SURVEY

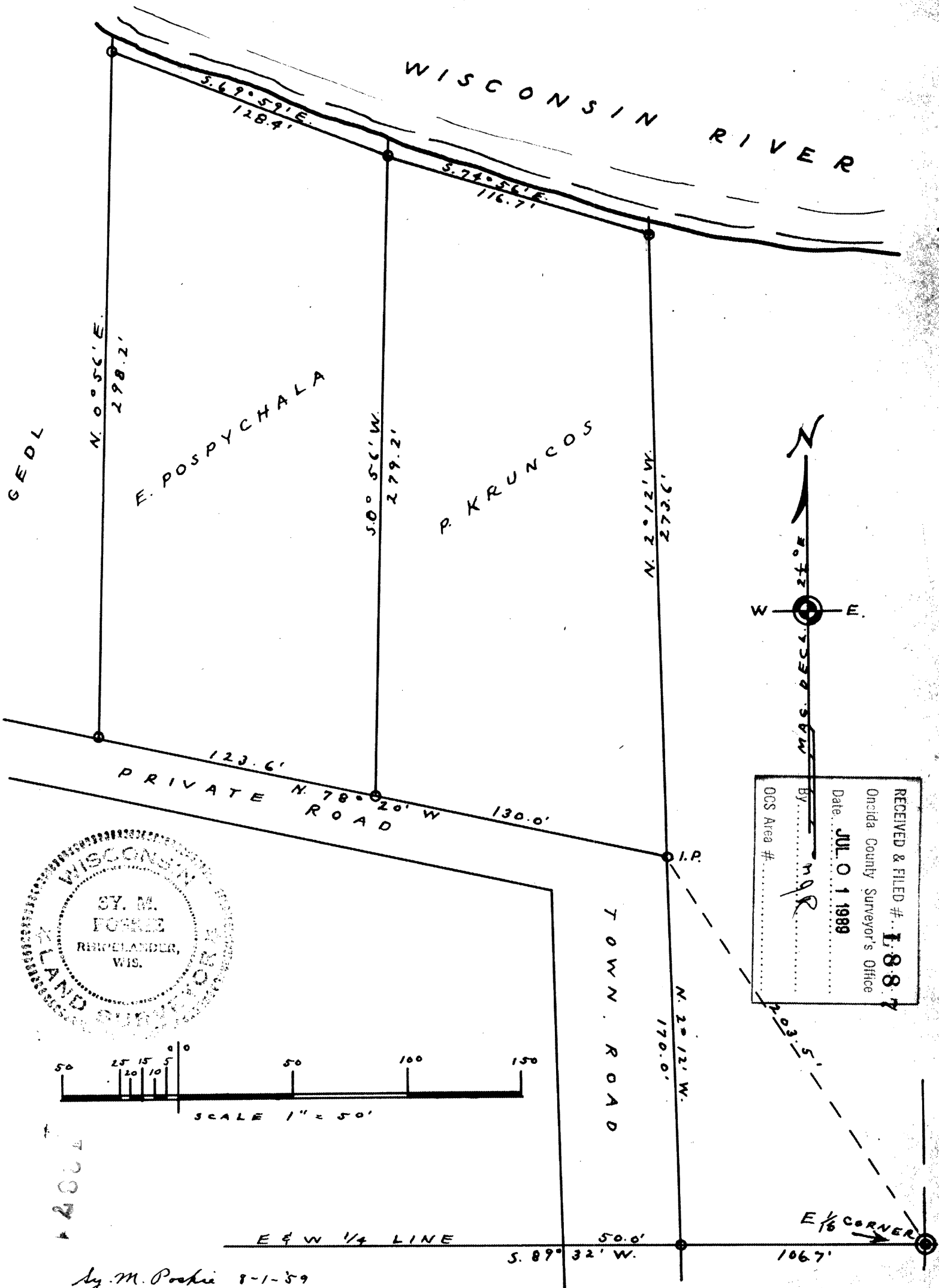
FOR

ED. POSPYCHALA & PETER KRUNCOS

GOV'T. LOT 6, SEC. 15, T. 37 N. R. 9 E.
ONEIDA COUNTY, WISCONSIN.

1887

1887



RECEIVED & FILED #. 1887
Oneida County Surveyor's Office
Date: JUL 01 1989
By: MGR
OCS Area #

By M. Poshie 8-1-59