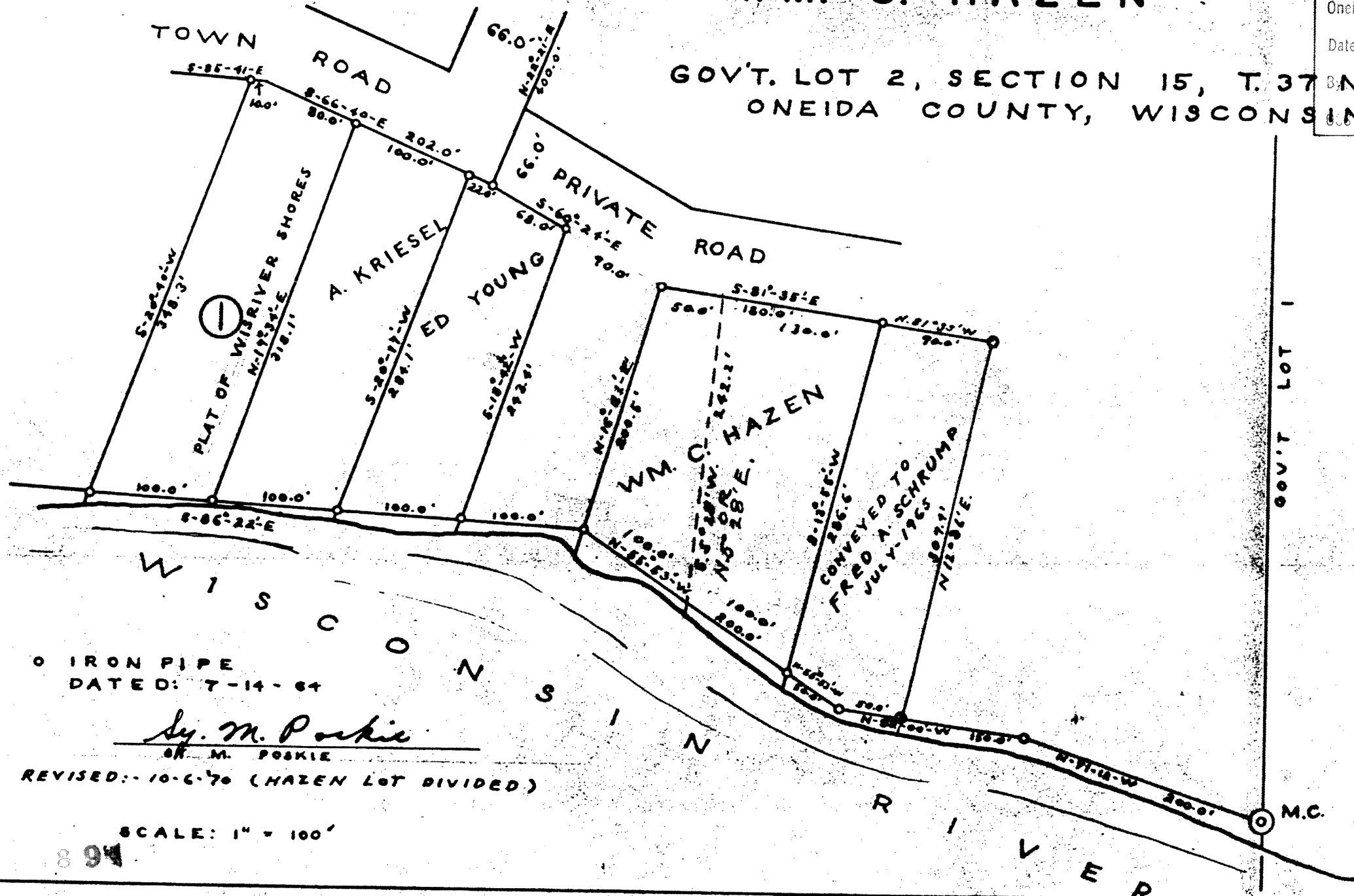


L889

SURVEY FOR WM. C. HAZEN

RECEIVED & FILED # **L889**
 Oneida County Surveyor's Office
 Date **JUL 0 1 1969**
 B.N. **R. 8 E.**
 S. 15

GOV'T. LOT 2, SECTION 15, T. 37 N. R. 8 E.
 ONEIDA COUNTY, WISCONSIN



○ IRON PIPE
 DATED: 7-14-64

Sy. M. Poskie
 S. M. POSKIE

REVISED: 10-6-70 (HAZEN LOT DIVIDED)

SCALE: 1" = 100'

894

889