

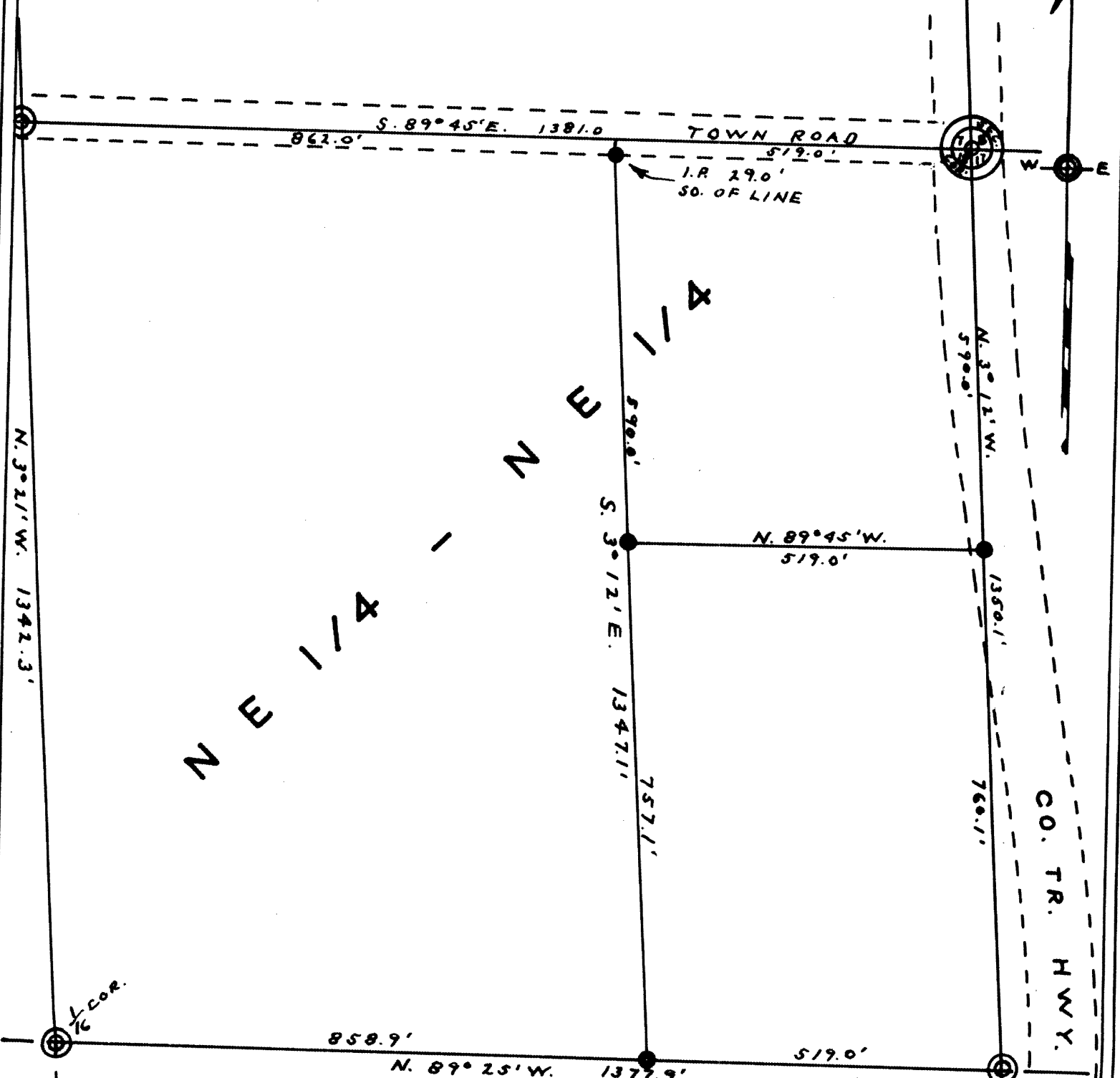
SURVEY

FOR
CLARENCE SODERLUND

IN THE
NE 1/4 - NE 1/4, SEC. 18, T. 36 N., R. 9 E
ONEIDA COUNTY, WISCONSIN.

L897

L897



○ EXISTING CORNERS. I.P.
● IRON PIPE SET FOR THIS SURVEY.

SCALE 1" = 200'
DATED: 4-20-'74

1/8 CORNER
BT. 5" JACK PINE.
S. 58° E. 25.7'

RECEIVED & FILED #	L897
On the County Surveyor's Office	
Date	JUL 0 1 1989
By	MPK
OCS Area #	

By M. Poskie
WIS. 5-140

L897