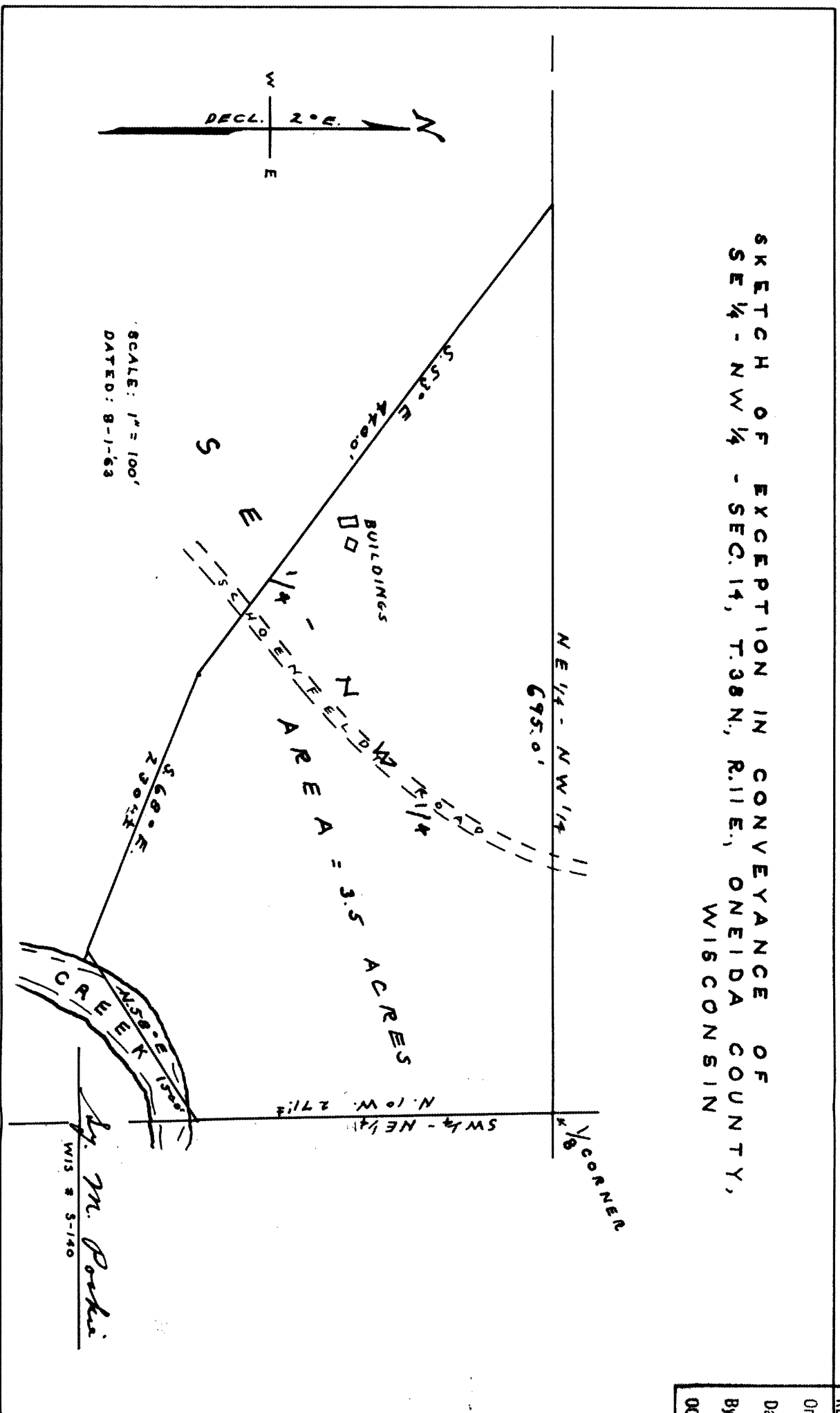


L900

SKETCH OF EXCEPTION IN CONVEYANCE OF
SE 1/4 - NW 1/4 - SEC. 14, T.38N., R.11E., ONEIDA COUNTY,
WISCONSIN



RECEIVED & FILED #. **L900**

Oneida County Surveyor's Office

Date: **JUL 01 1963**

By: *M. Parkie*

ODS Area #:

L900

L900