

L919

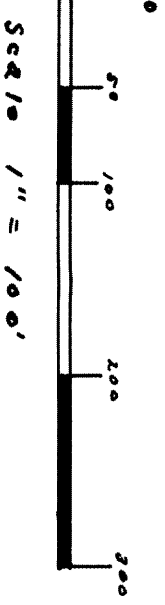
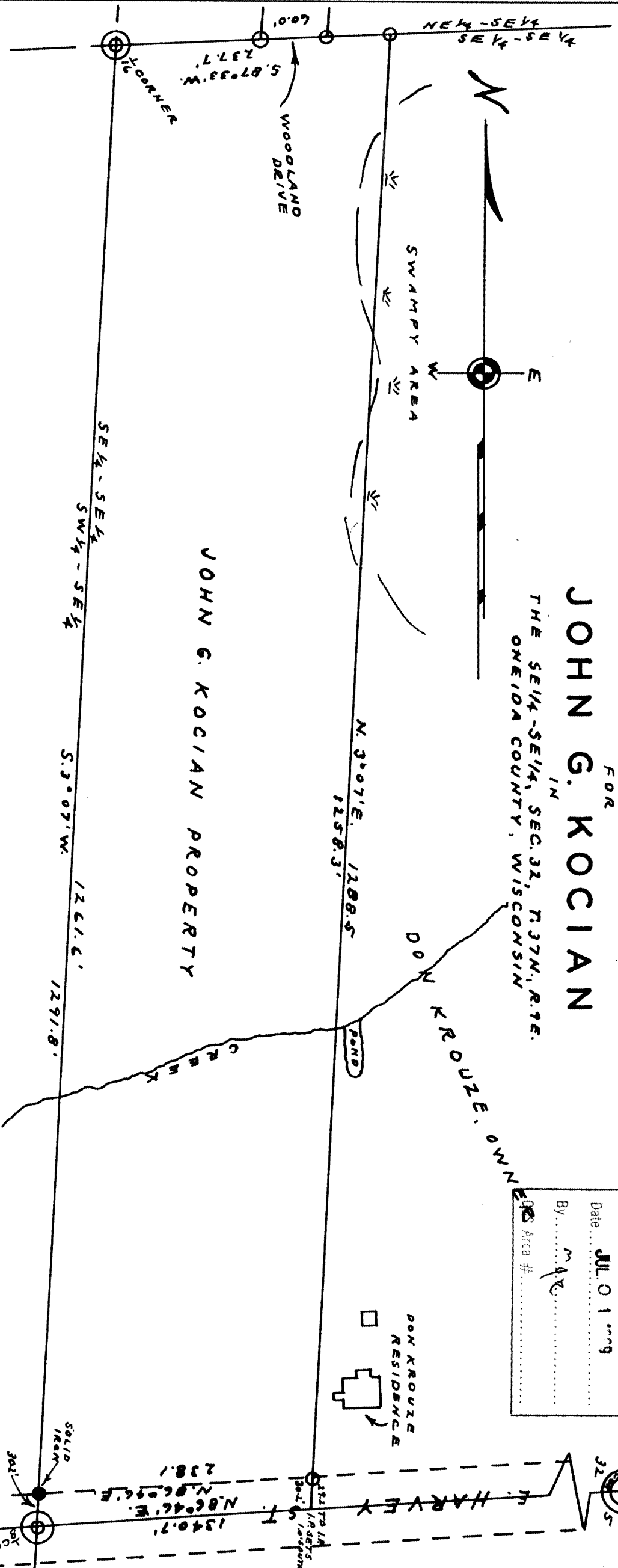
# SURVEY

FOR

## JOHN G. KOCIAN

IN  
THE SE1/4-SE1/4, SEC. 32, T.37N., R.7E.  
ONEIDA COUNTY, WISCONSIN

RECEIVED & FILED #...	<b>L919</b>
Oneida County Surveyor's Office	
Date	<b>JUL 0 1 1969</b>
By	<i>M. A. R.</i>
Area #	



○ IRON MARKER  
DATED 1-25-65

*By M. P. Paskie*

L91

WIS 5-140