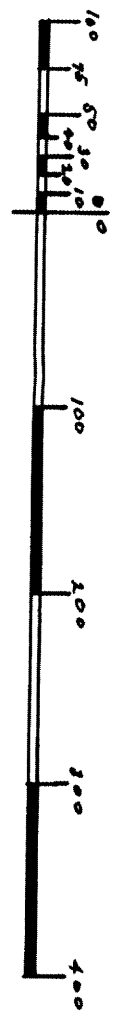
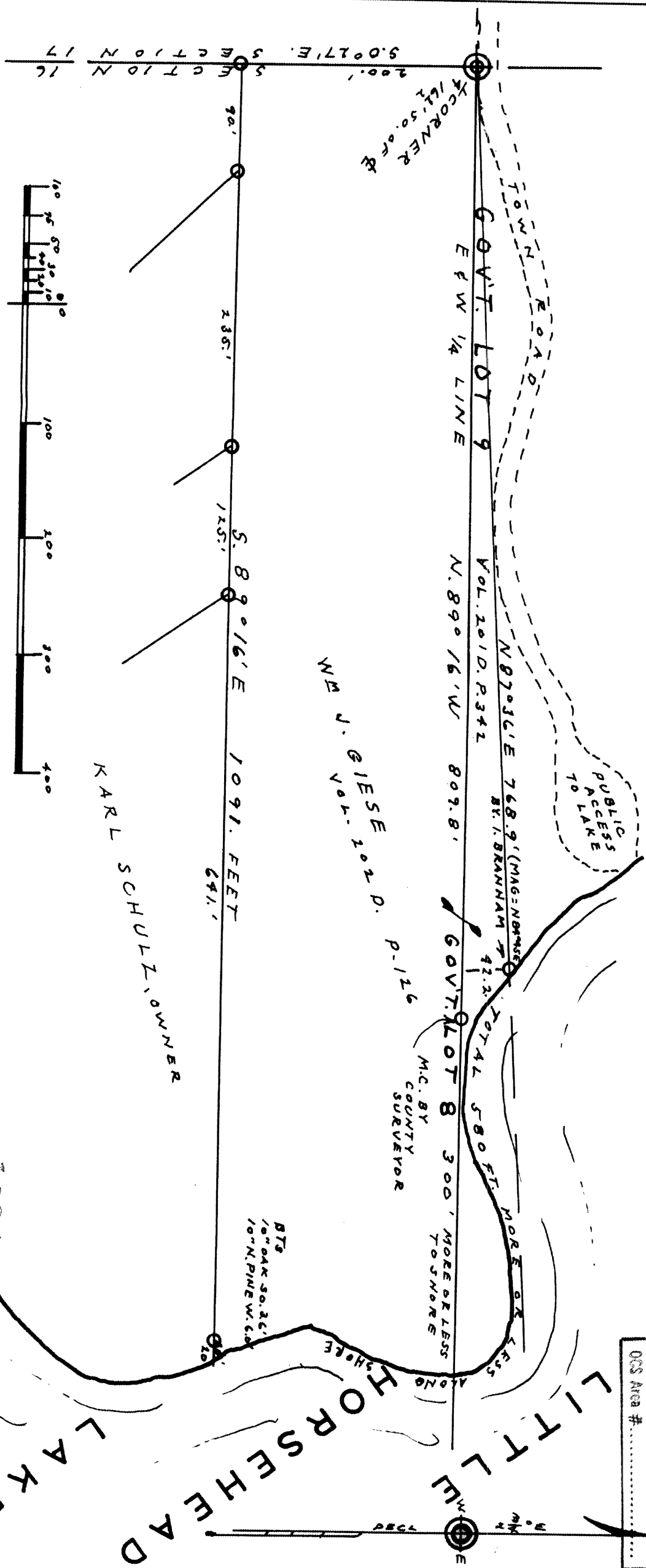


L9214

SURVEY FOR WILLIAM J. GIESES

GOV'T. LOTS 8 & 9, SEC. 16, T. 37 N., R. 7 E.,
ONEIDA COUNTY, WISCONSIN

RECEIVED & FILED #	L9214
Oneida County Surveyor's Office	
Date	JUL 0 1 1989
By	MJR
OCS Area #	



INDICATES IRON PIPE
 DATED 5-17-85
 By M. Decker
 WIS 5-140

L9214

L9214