

L927

# SURVEY FOR URSULA FENNEL

IN

GOV'T. LOT 4 & GOV'T. LOT 7, SEC. 23, T. 37 N., R. 8 E.  
ONEIDA COUNTY, WISCONSIN.

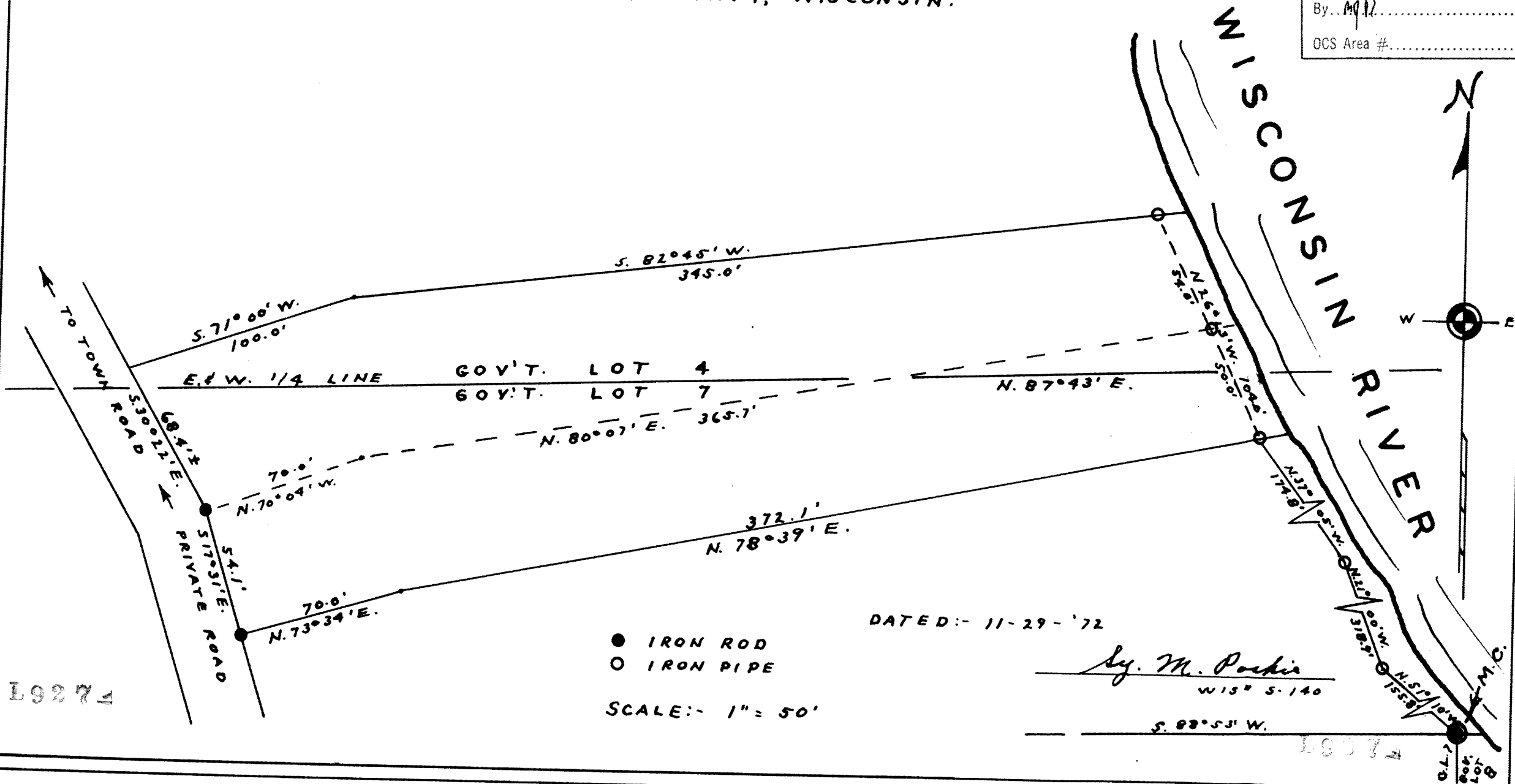
RECEIVED & FILED # L927

Oneida County Surveyor's Office

Date JUL 0 1 1988

By: M.P.R.

OCS Area #



L927

L927