

09294

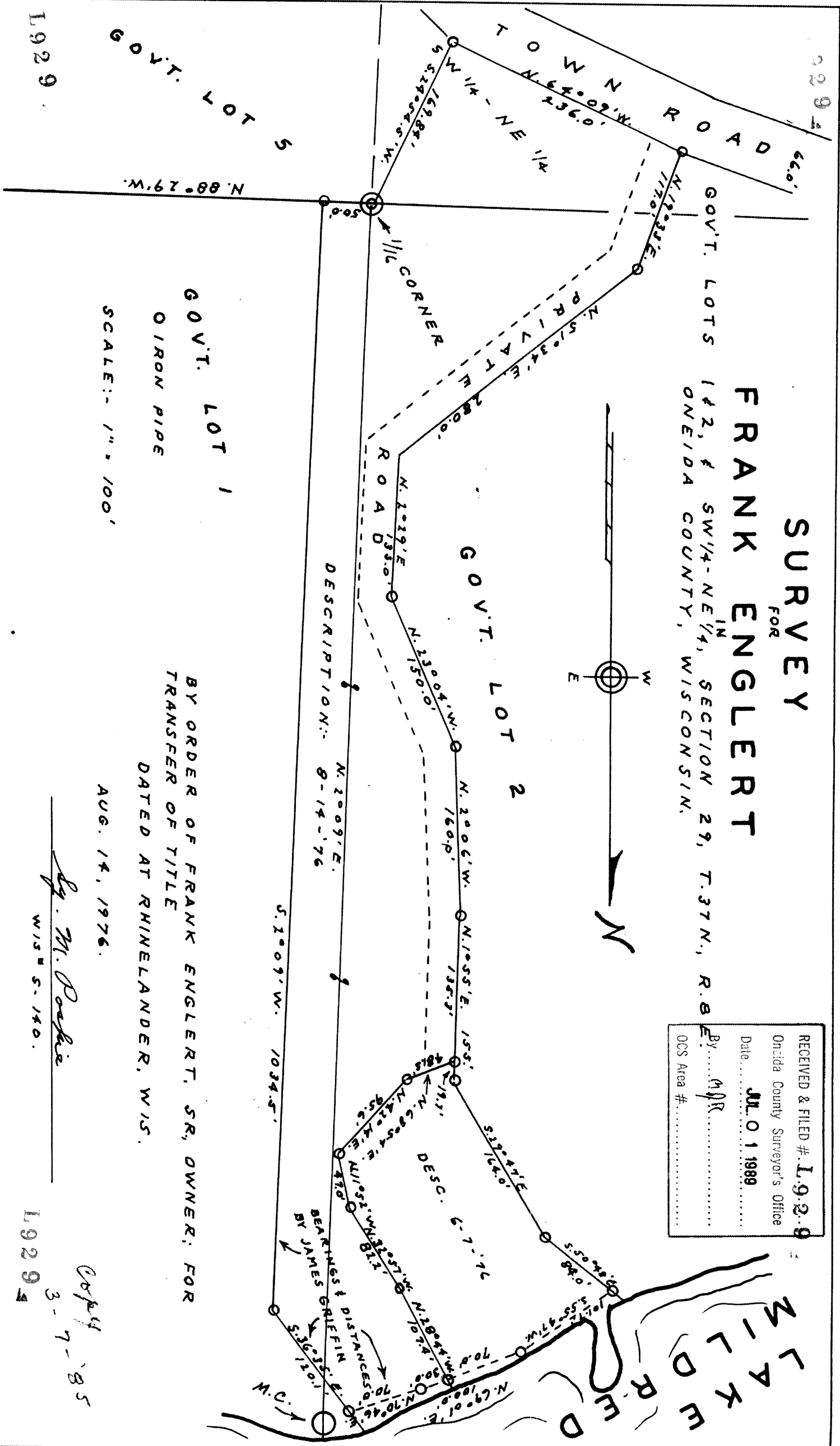
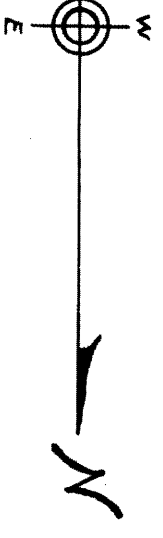
SURVEY

FOR

FRANK ENGLERT

GOV'T. LOTS 1 & 2, SW 1/4-NE 1/4, SECTION 29, T.37N., R.8E. ONEIDA COUNTY, WISCONSIN.

RECEIVED & FILED # **L9294**
 Oneida County Surveyor's Office
 Date **JUL 01 1989**
 By **MJR**
 CCS Area #



GOV'T. LOT 1

GOV'T. LOT 2

BY ORDER OF FRANK ENGLERT, SR., OWNER; FOR TRANSFER OF TITLE

DATED AT RHINELANDER, WIS.

AUG. 14, 1976.

By M. Dackie

WIS S. 140.

Copy 4 3-7-85

L9294

L9294