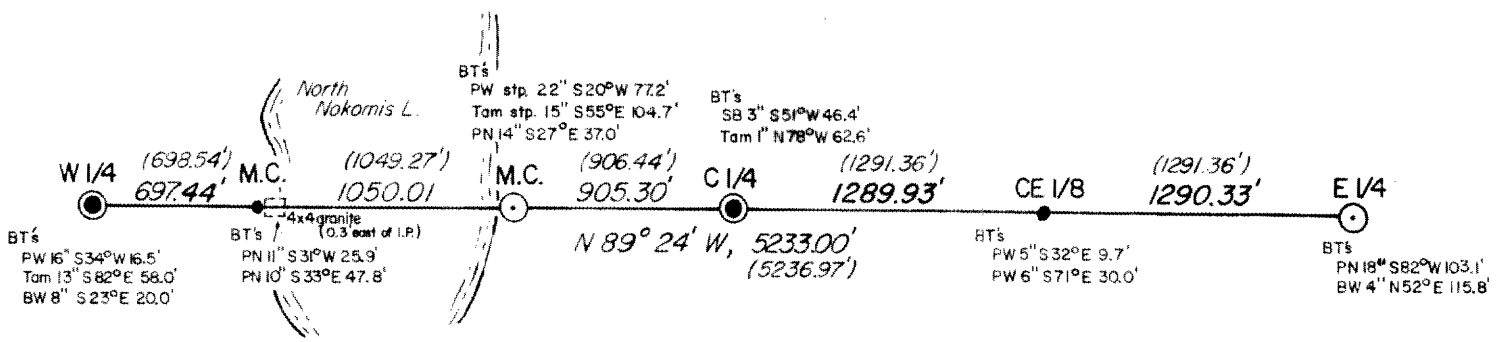


RECEIVED & FILED # **L.9.3**...
 Oneida County Surveyor's Office
 Date **FEB. 1 1 1986**
 By **M.J.H.**
 OCS Area #.....



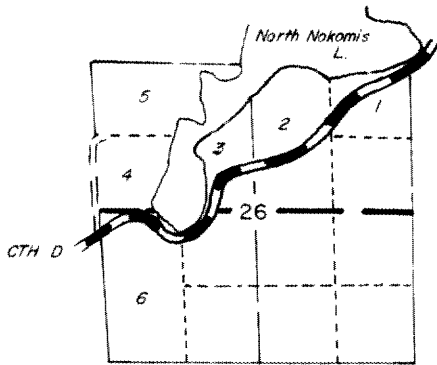
LEGEND

- 1" iron pipe found in place
 - ⊙ 2" I.P. w/W.C.D. brass cap found in place
 - ⊙ 2" I.P. w/W.C.D. brass cap reset from bearing trees
- (0.00') distances from map by 1lg 1964



I, M.E. SEYMOUR RLS 1412, certify this is a correct representation of the E-W 1/4 line of Sec. 26, T39N, R8E, to the best of my knowledge and belief.

Marvin E. Seymour 9-19-77



LOCATION DIAGRAM
 T39N, R8E

867

magnetic from map by 1lg 1964

T39N, R8E, Oneida Co.
 Sec. 26; E-W 1/4 line

Survey for State of Wisconsin
 Department of Natural Resources
 NH-All State Forest

Scale 1" = 800' Dr. by MES 9-19-77

26, 39-R